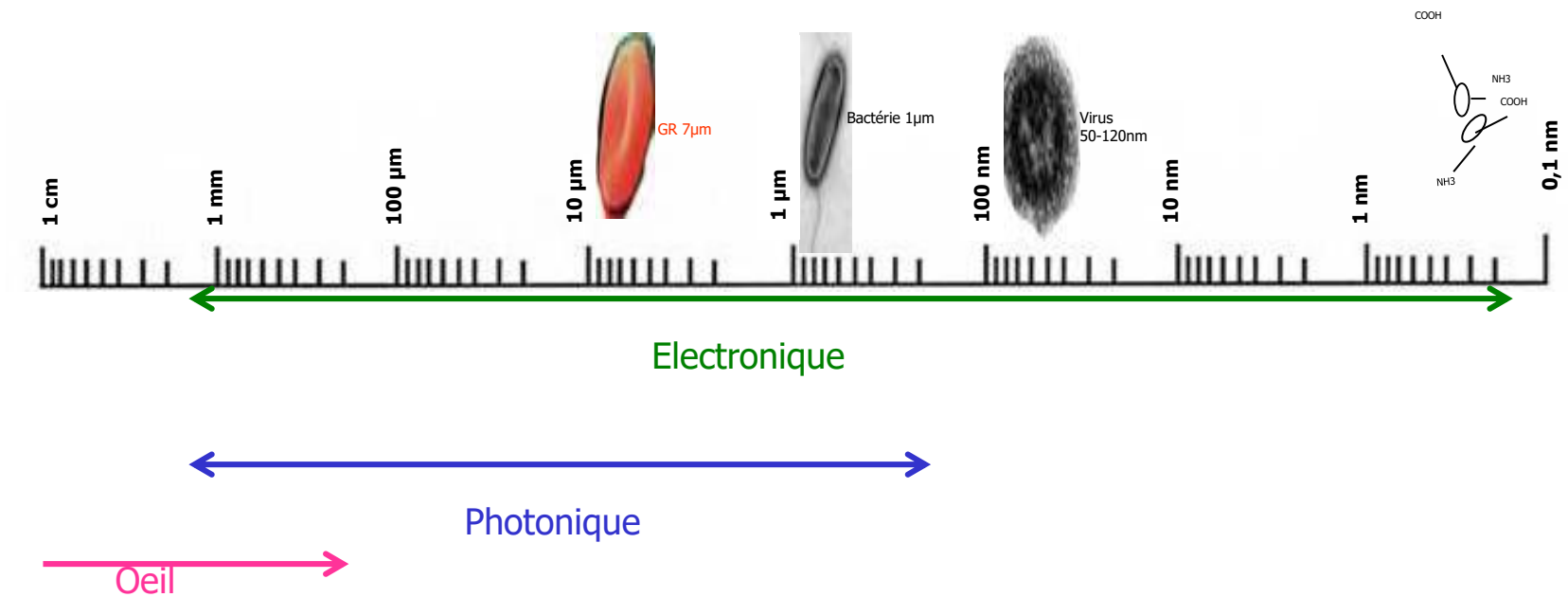


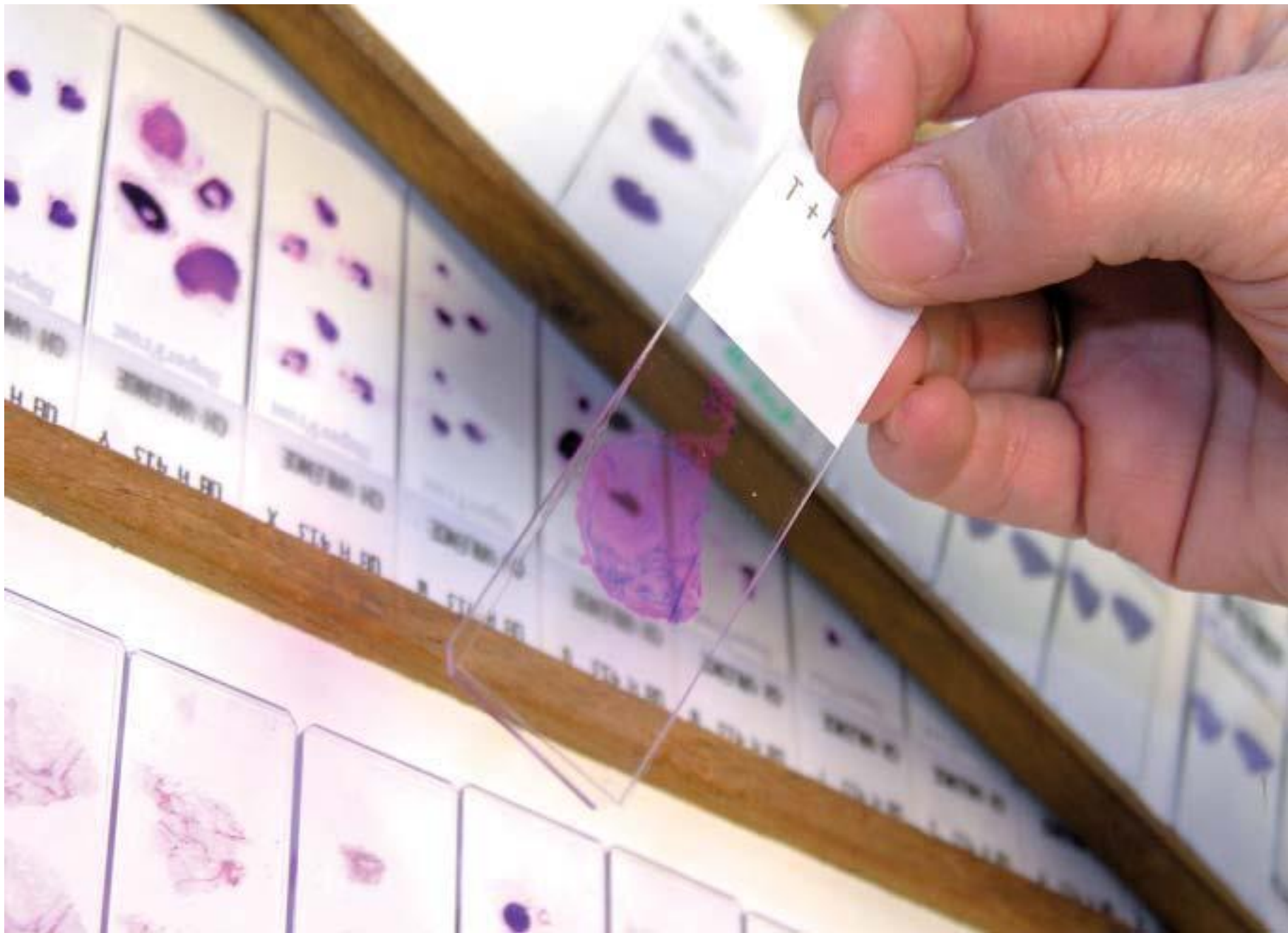
- Notion d'échelle en microscopie et marquage

Echelles de mesure MO vs MET

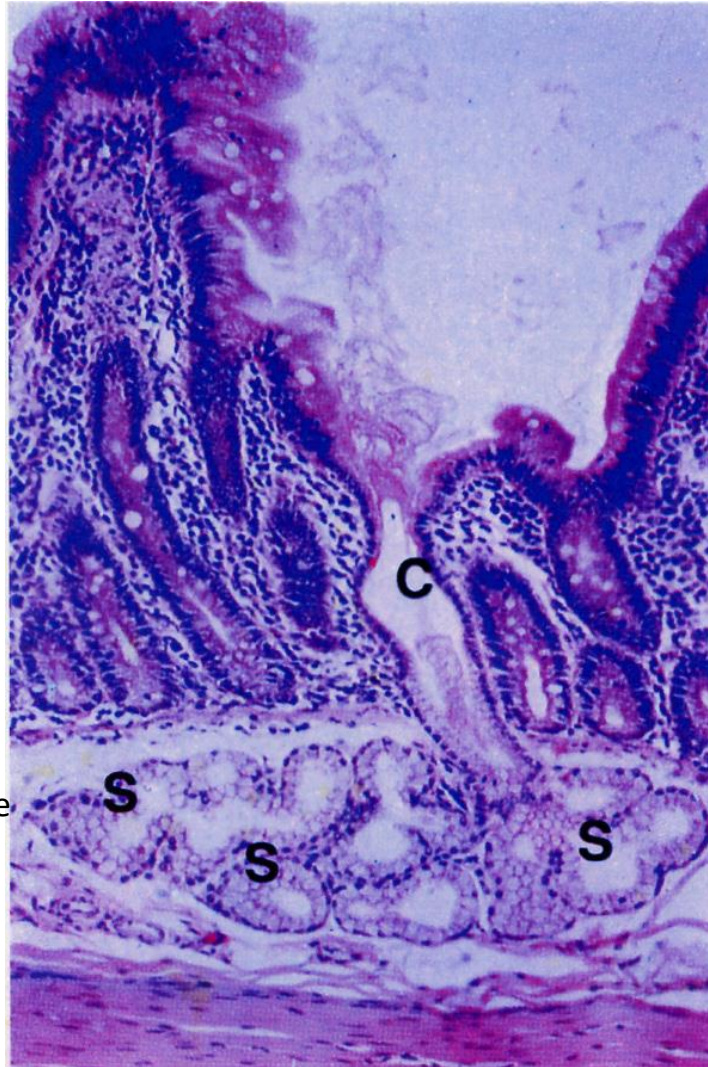








Tissus épithéliaux

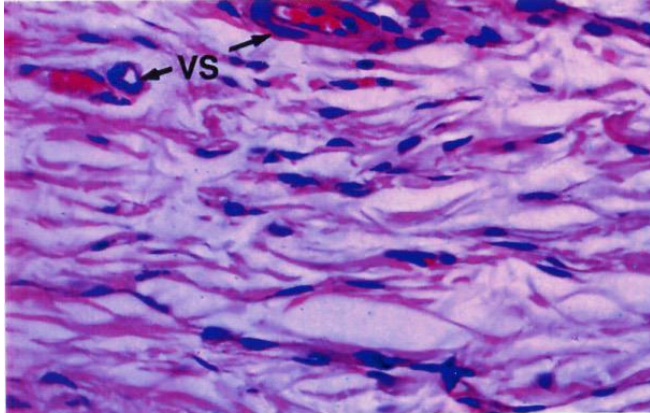


Epithélium glandulaire
(c : canal ; S : unités
sécrétrices)

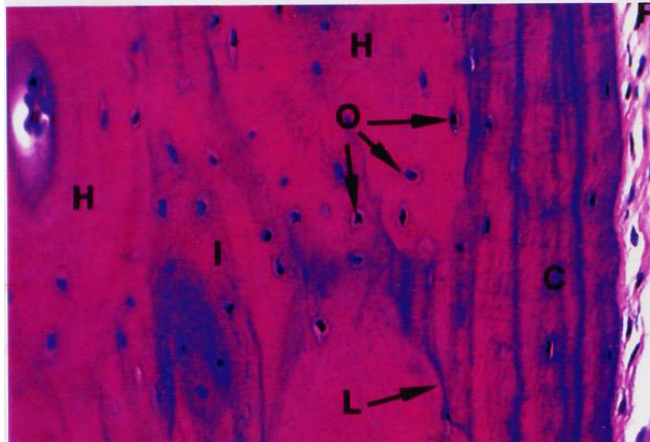
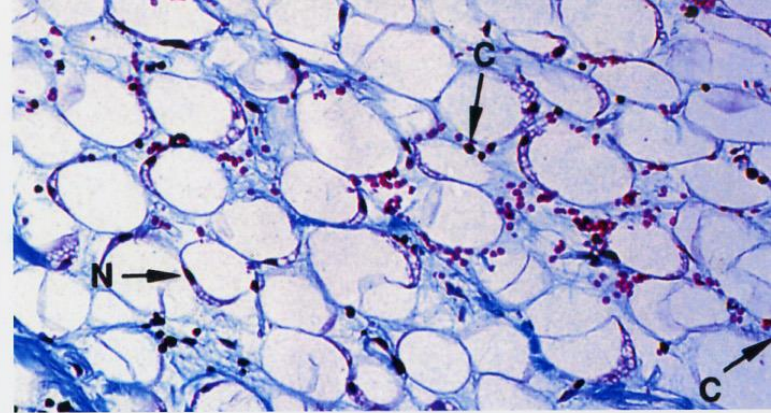
Épithélium de revêtement

Tissus conjonctifs

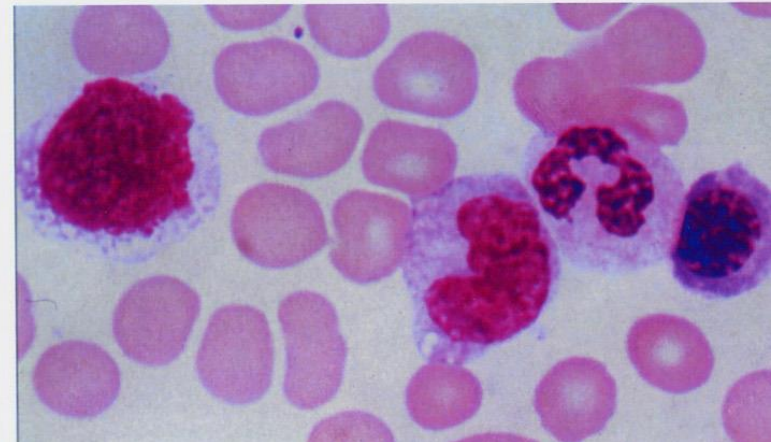
Non spécialisé



Adipeux blanc



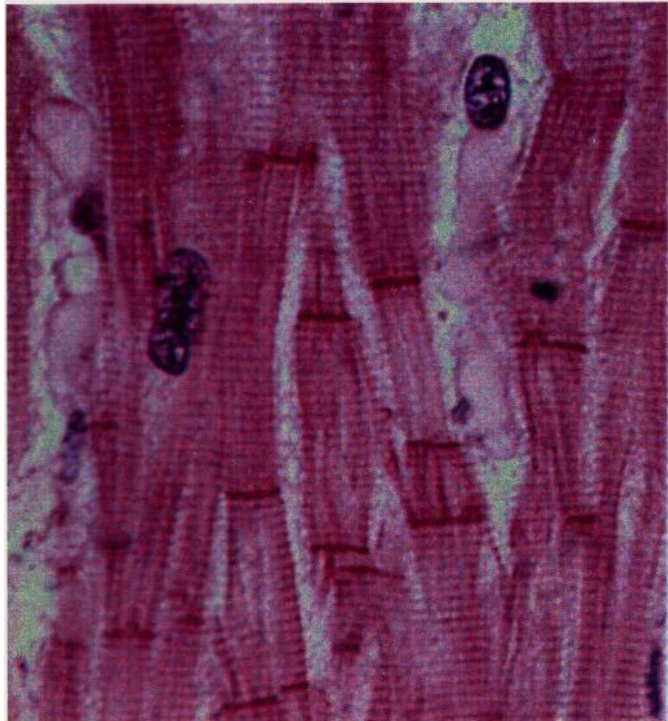
Osseux



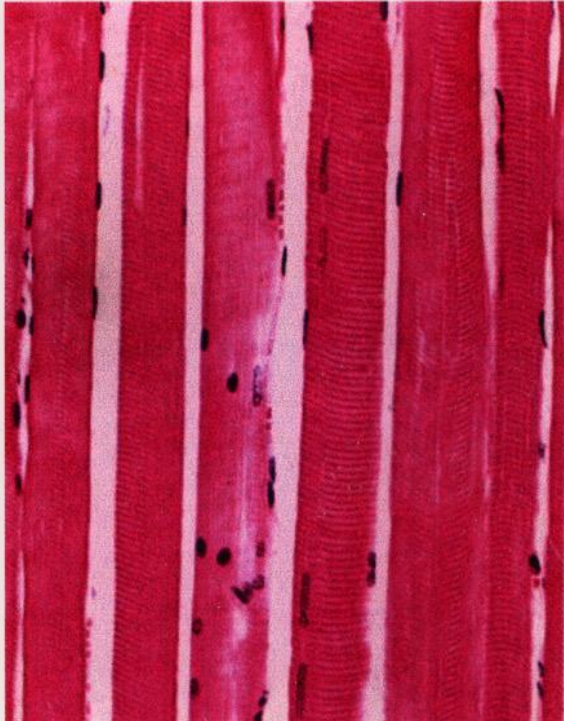
San
g

Tissus musculaires

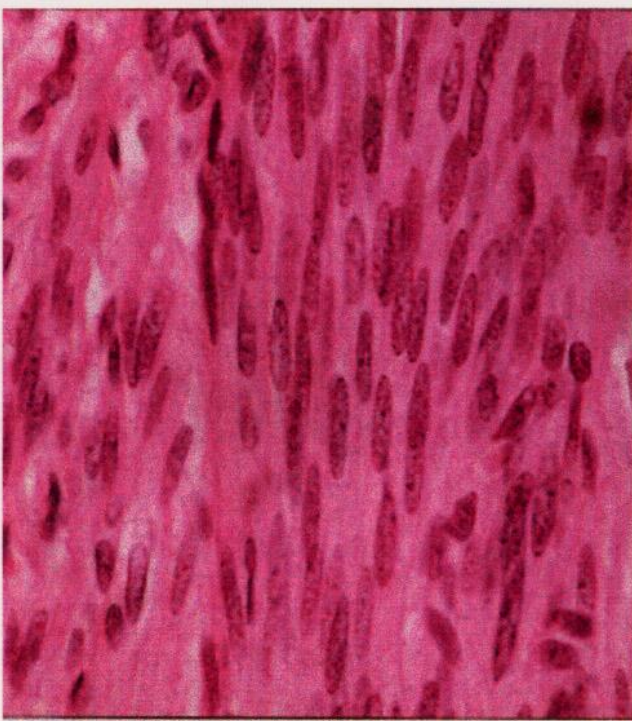
Cardiaque



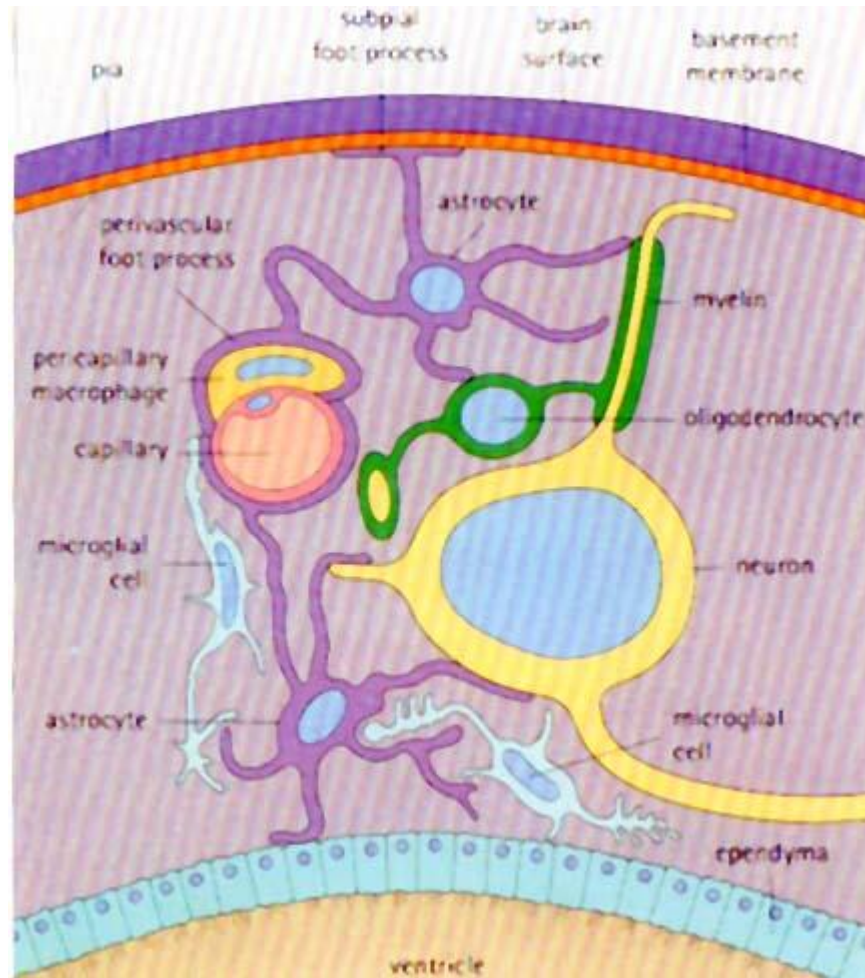
Strié squelettique et viscéral



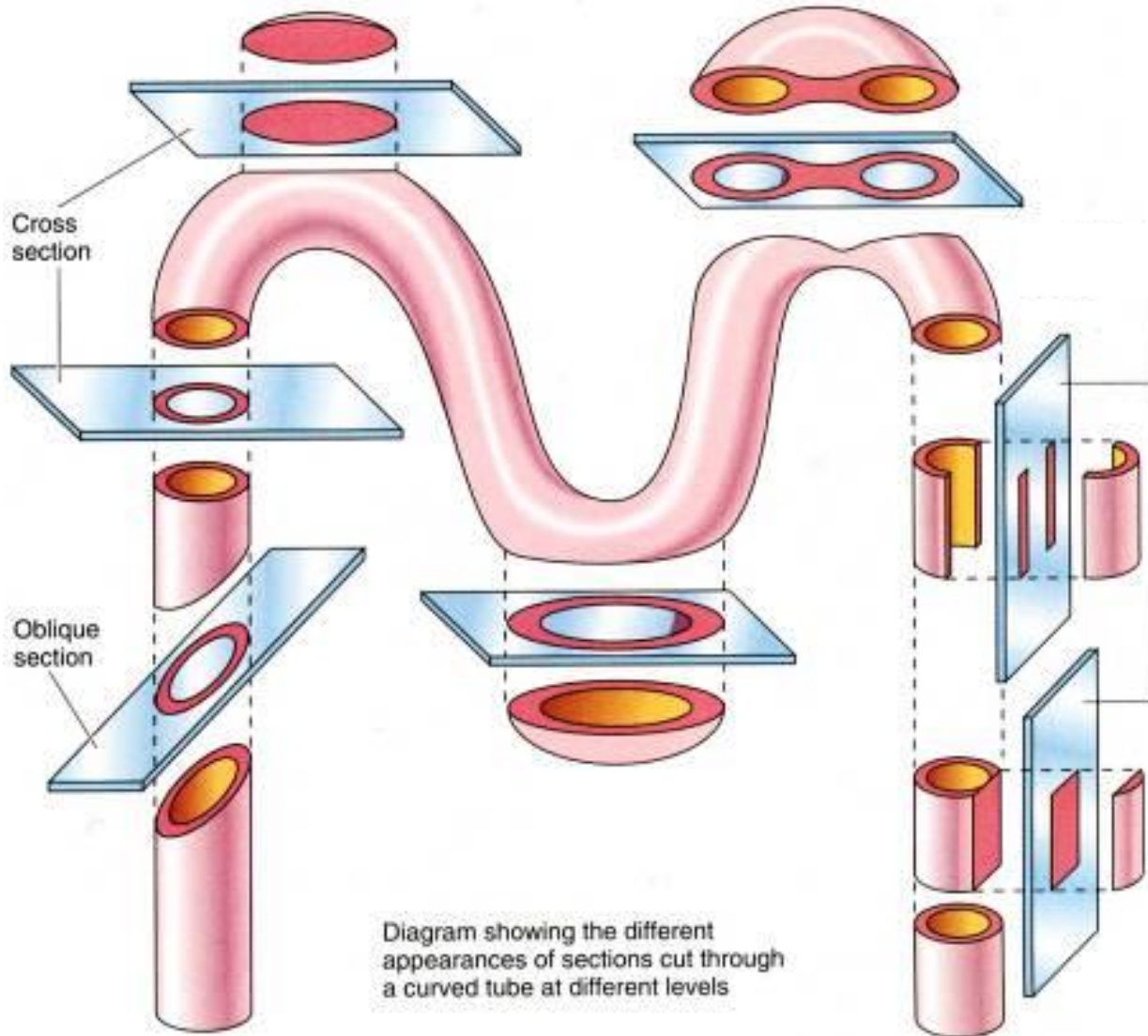
Lisse



Tissus nerveux



Neurone et glie dans le SNC



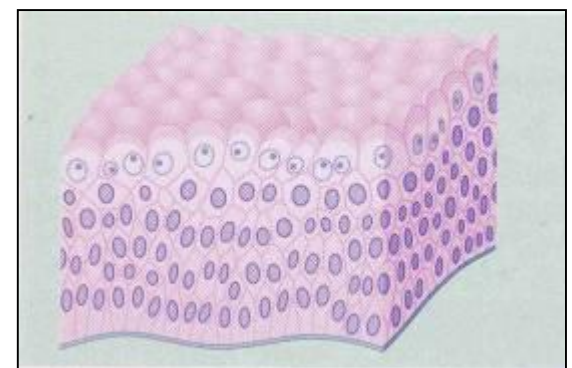
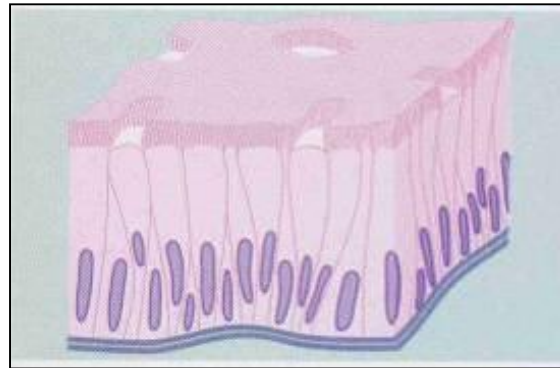
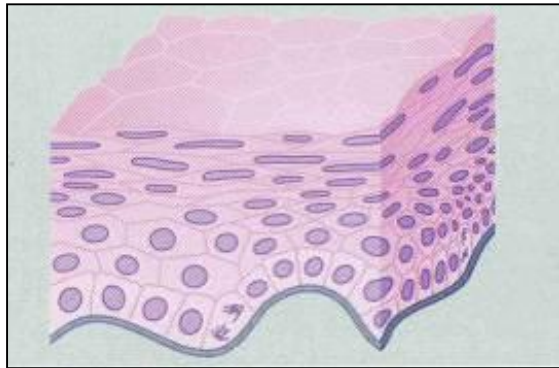
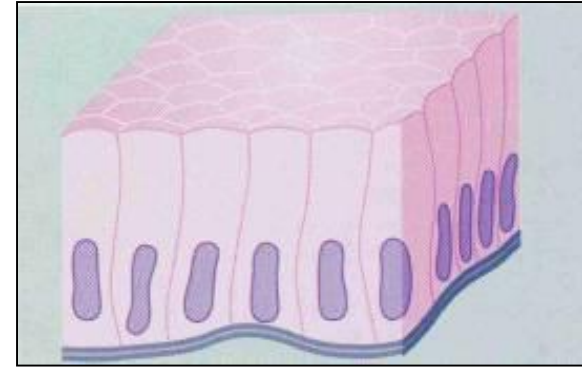
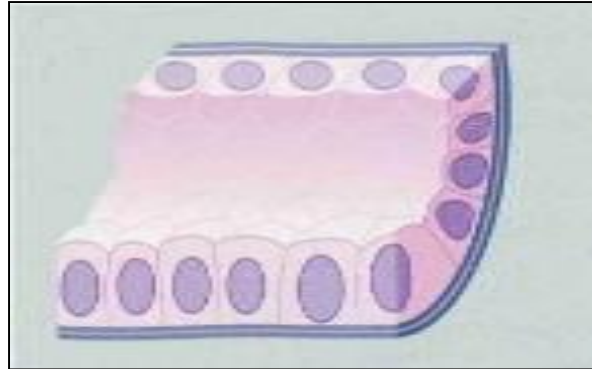
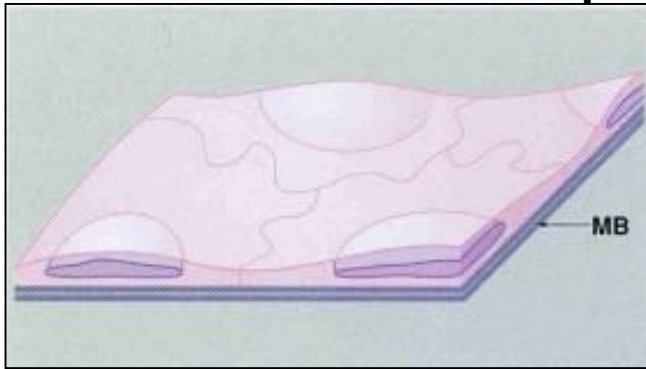
Les épithéliums

Nombre d'assises cellulaires

1 >>>>> SIMPLE

Plusieurs >>>>> STRATIFIÉES

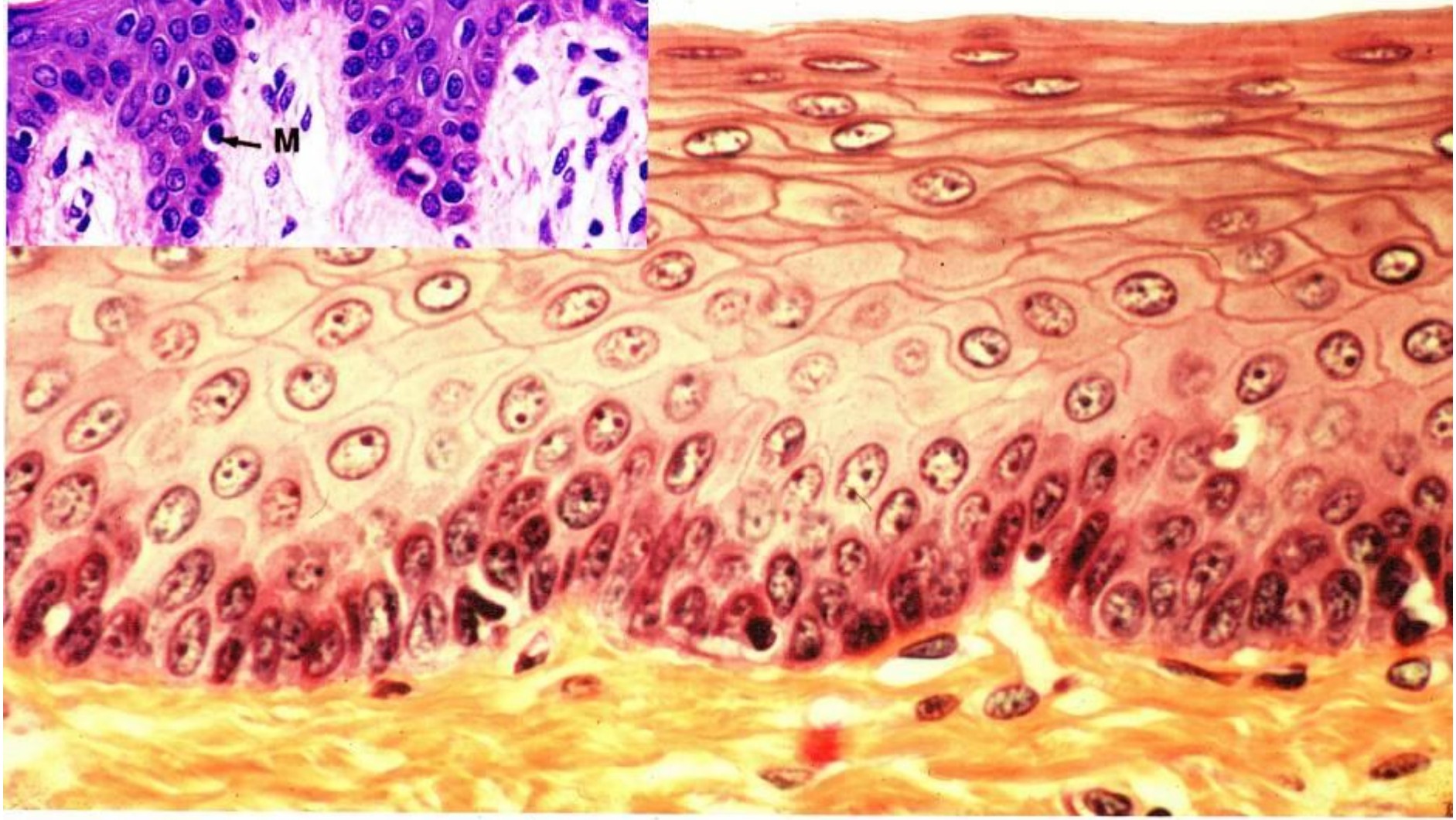
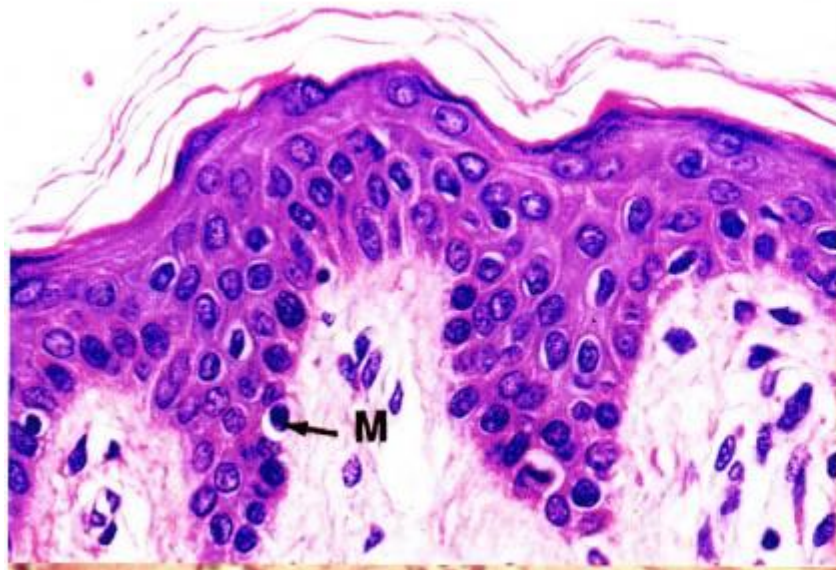
Forme des cellules épithéliales

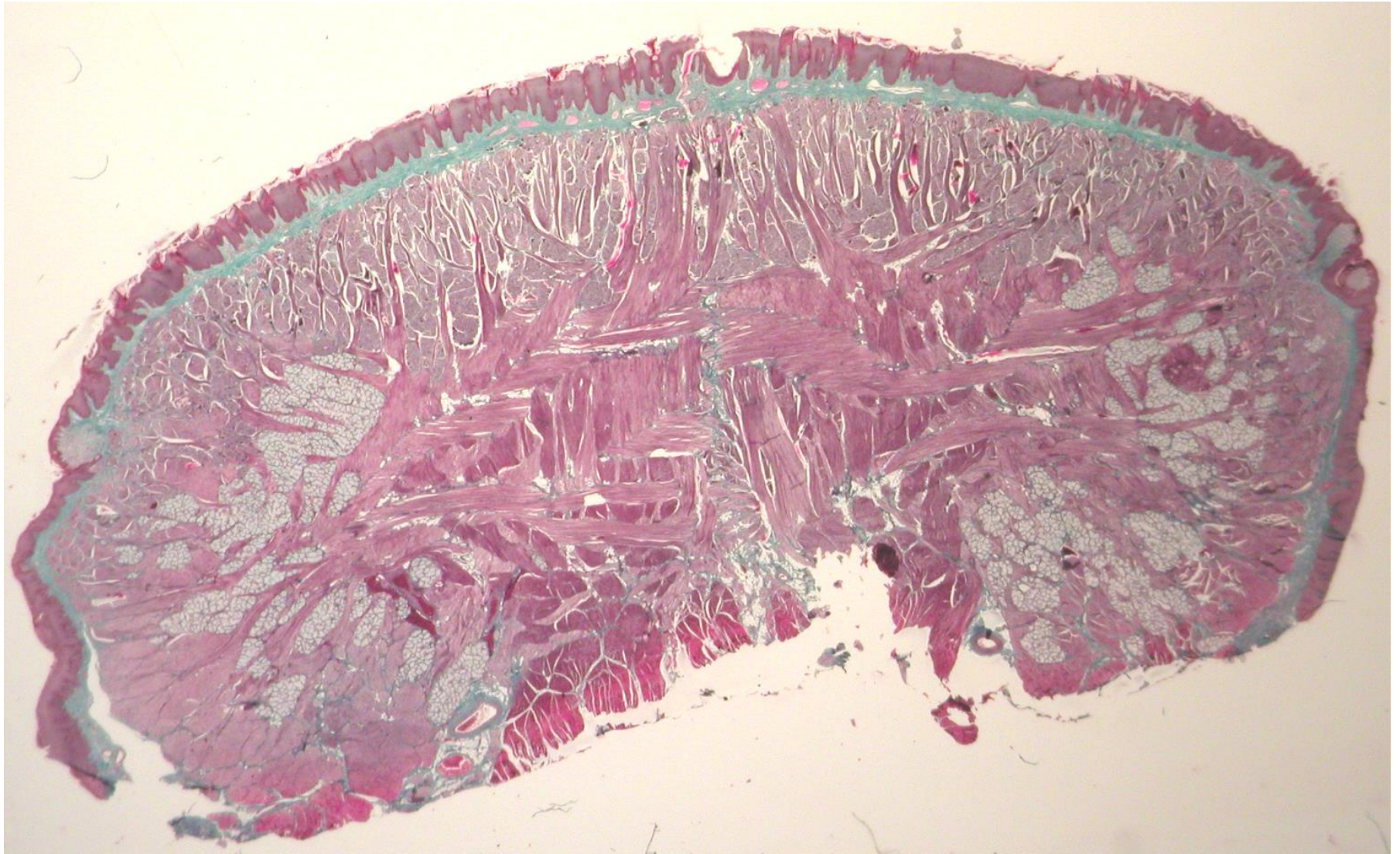


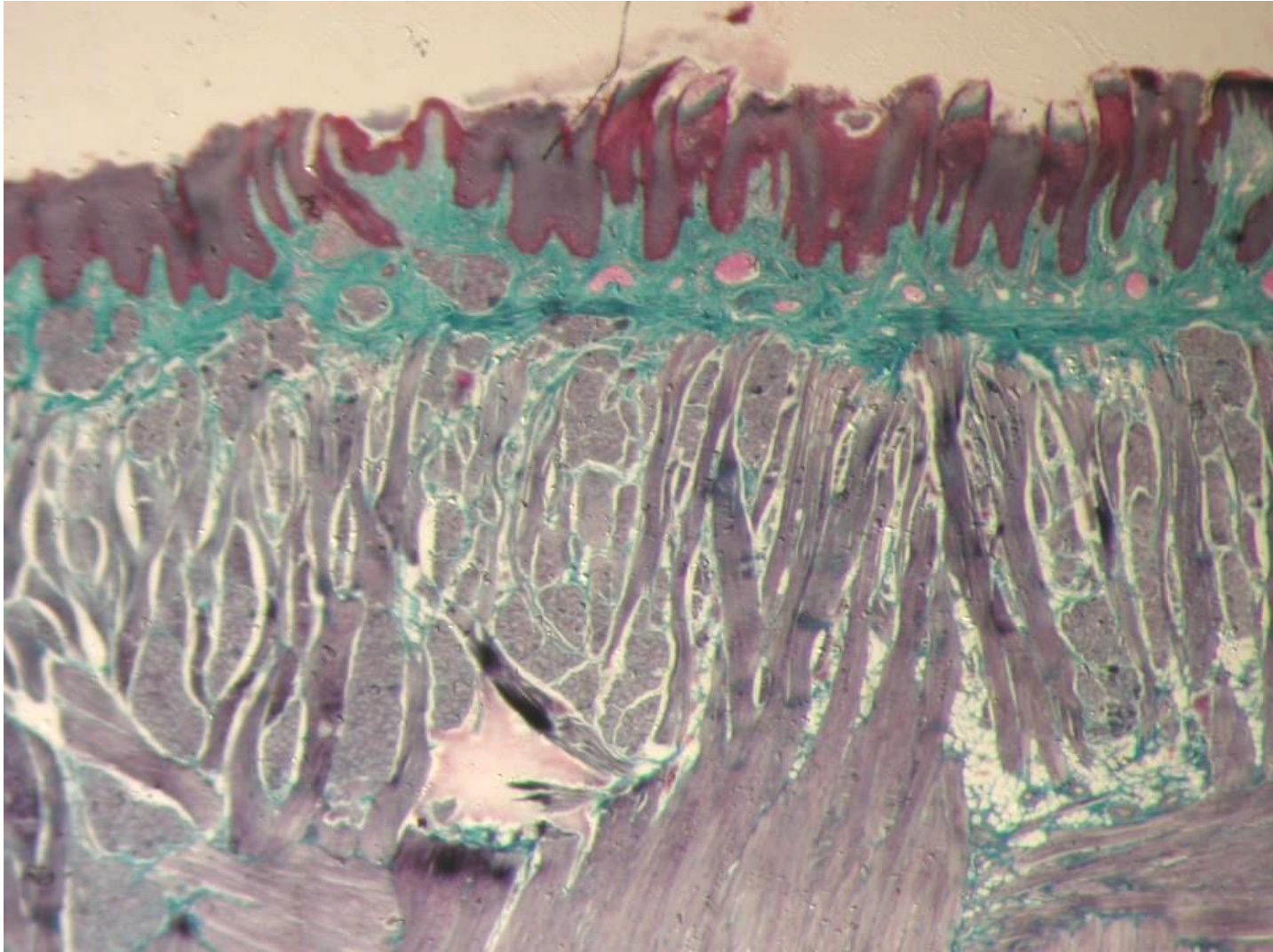
**Epithélium stratifié
pavimenteux**

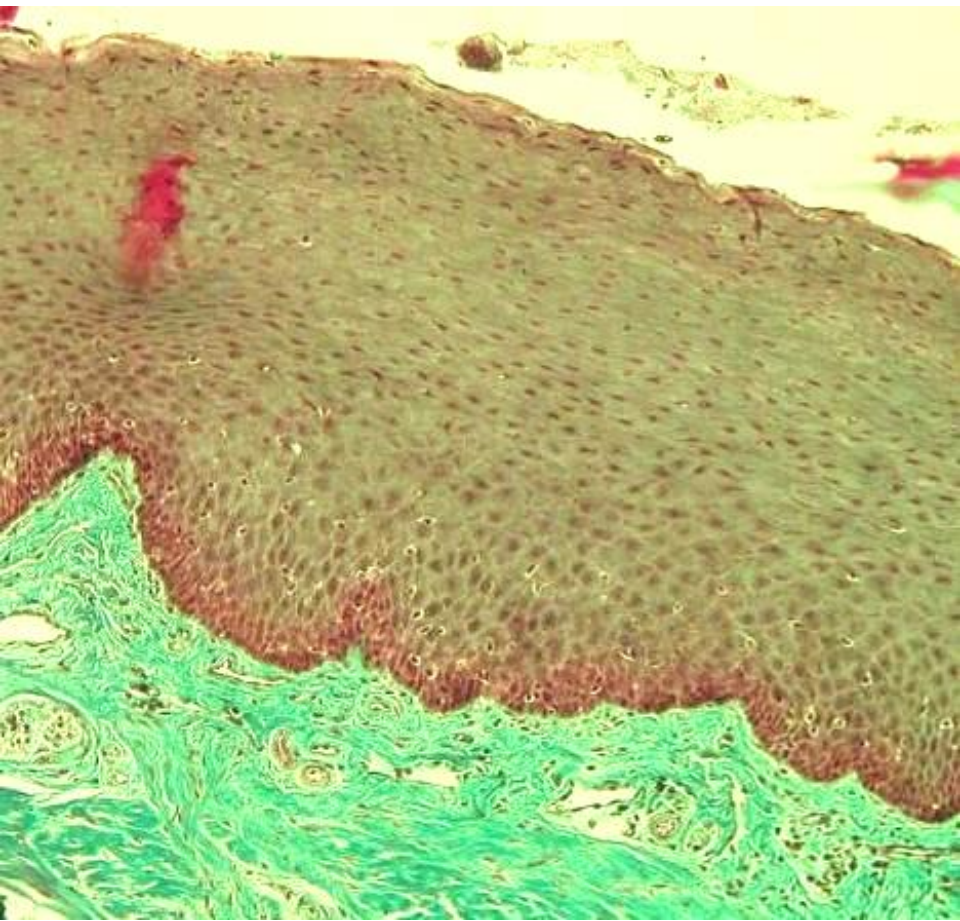
**Epithélium pseudostratifié
prismatique cilié**

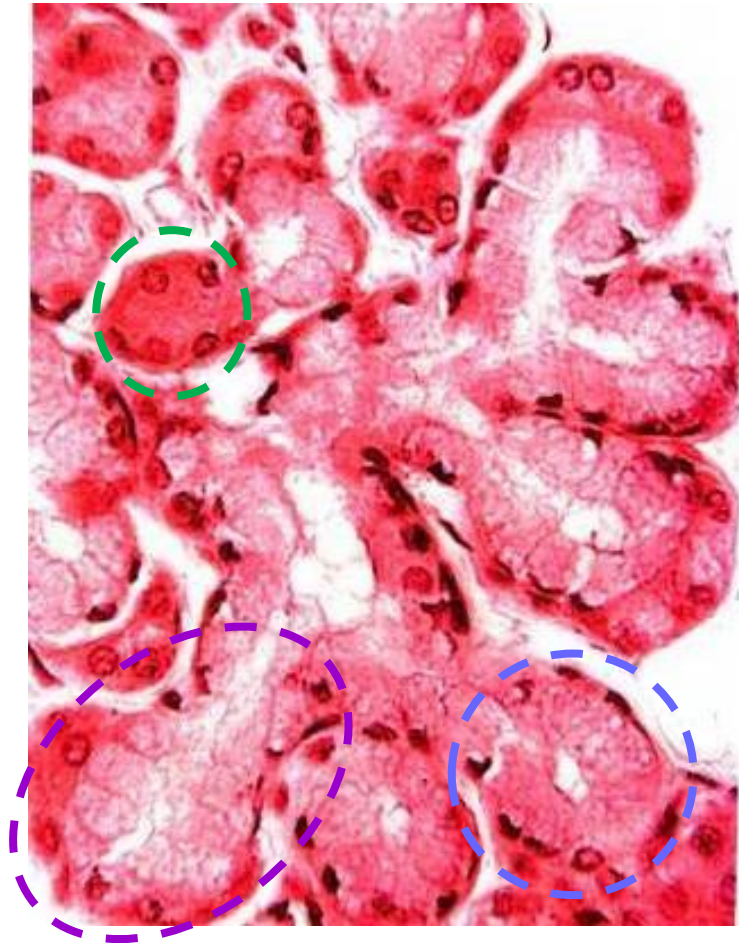
**Epithélium stratifié
Cubique**







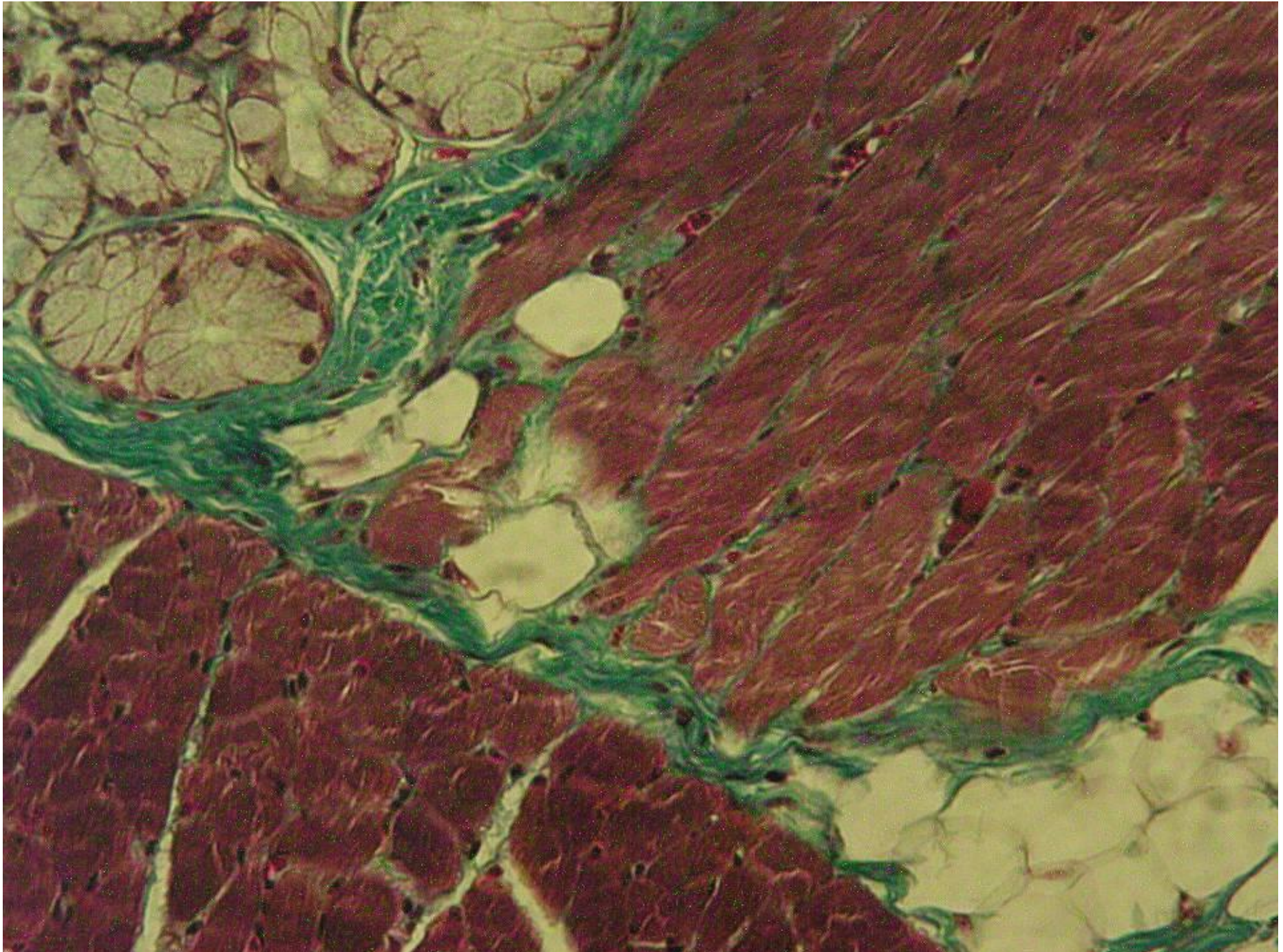




Acinus séreux

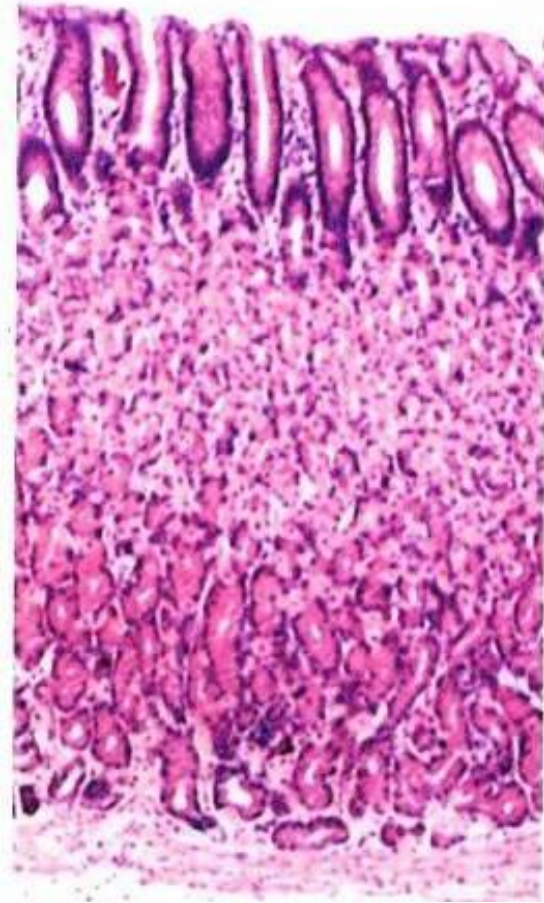
Acinus muqueux

Tubulo-acinus séro-muqueux

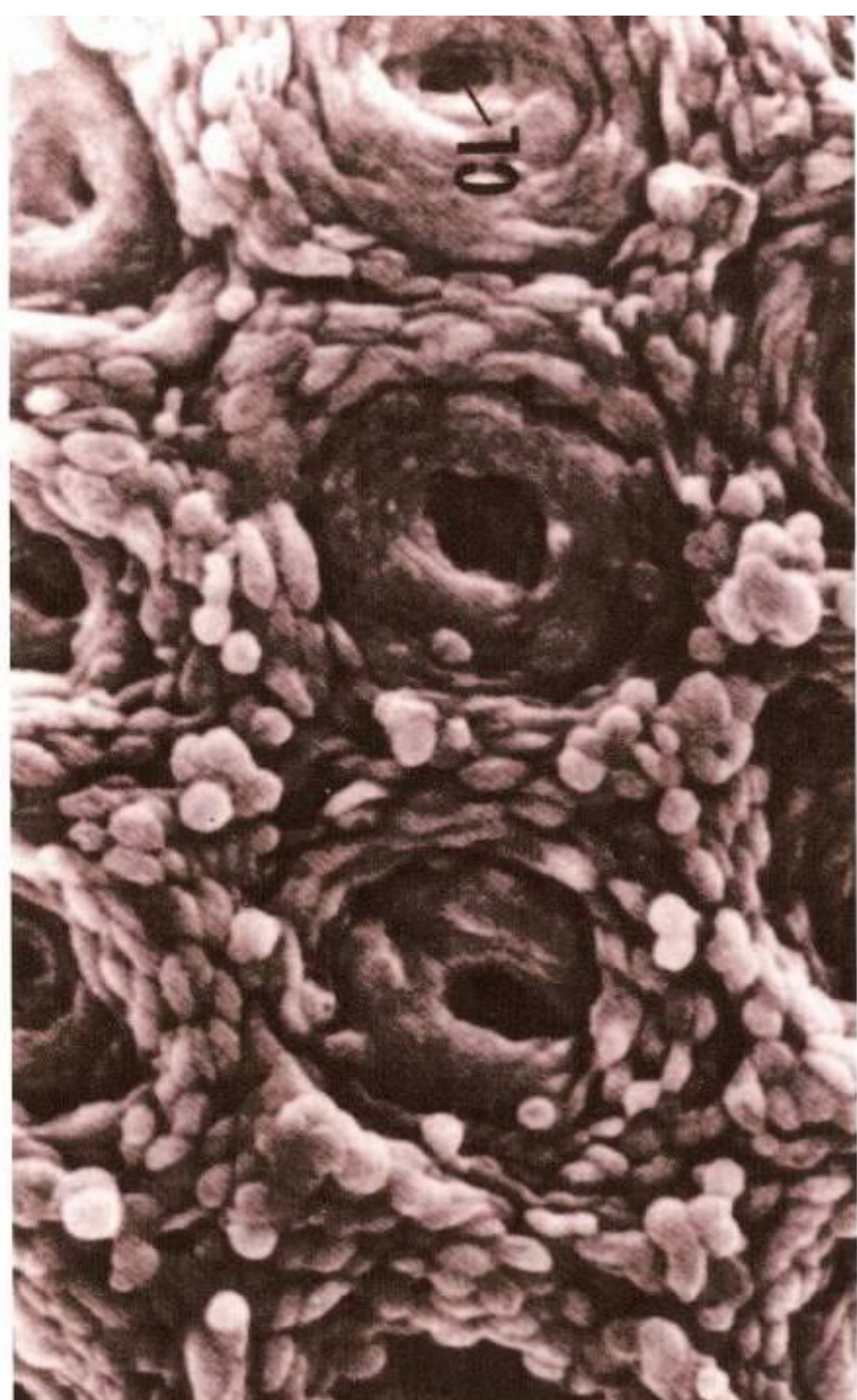
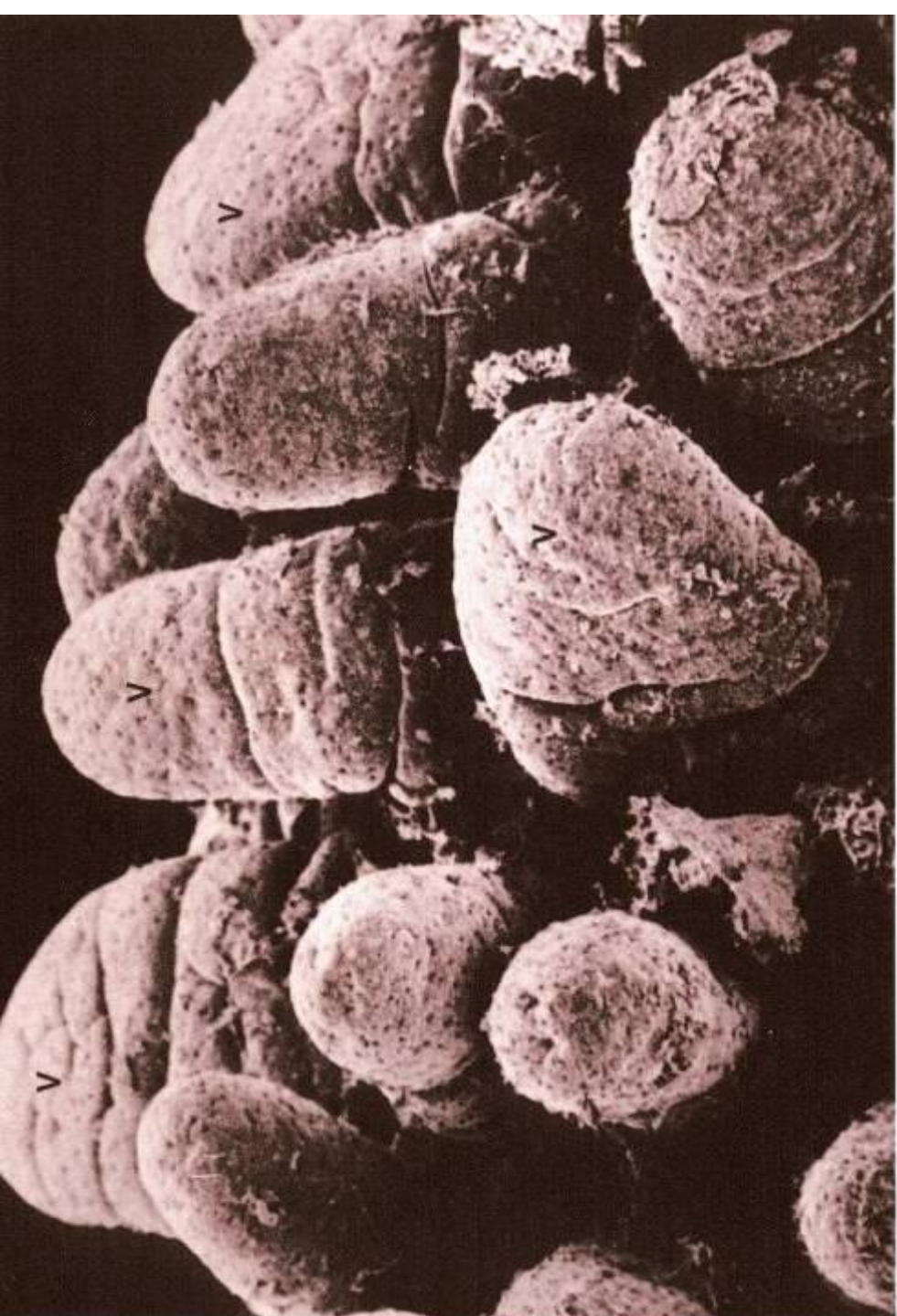


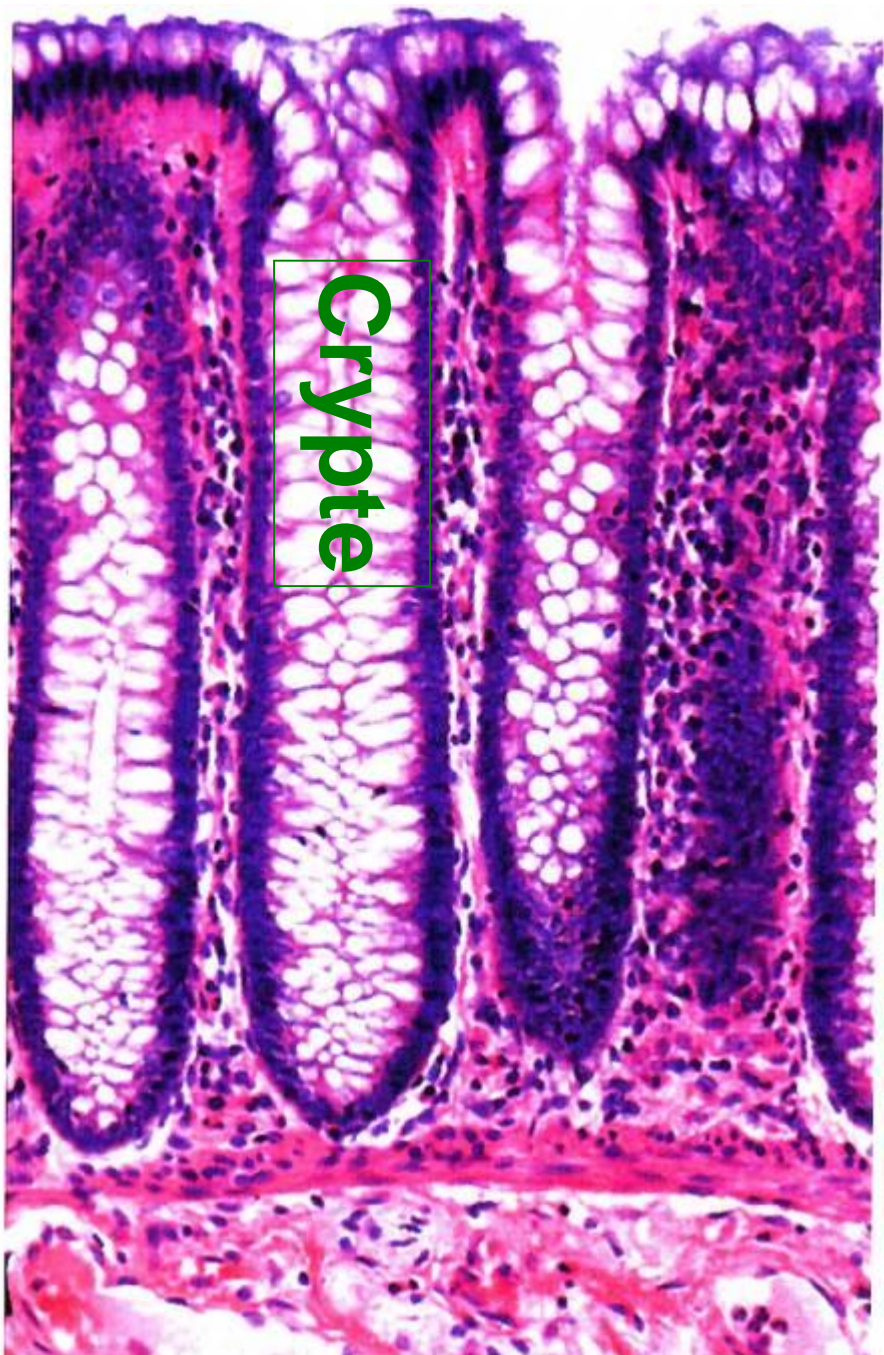


Villosités



Cryptes





villosités

ET

crypte

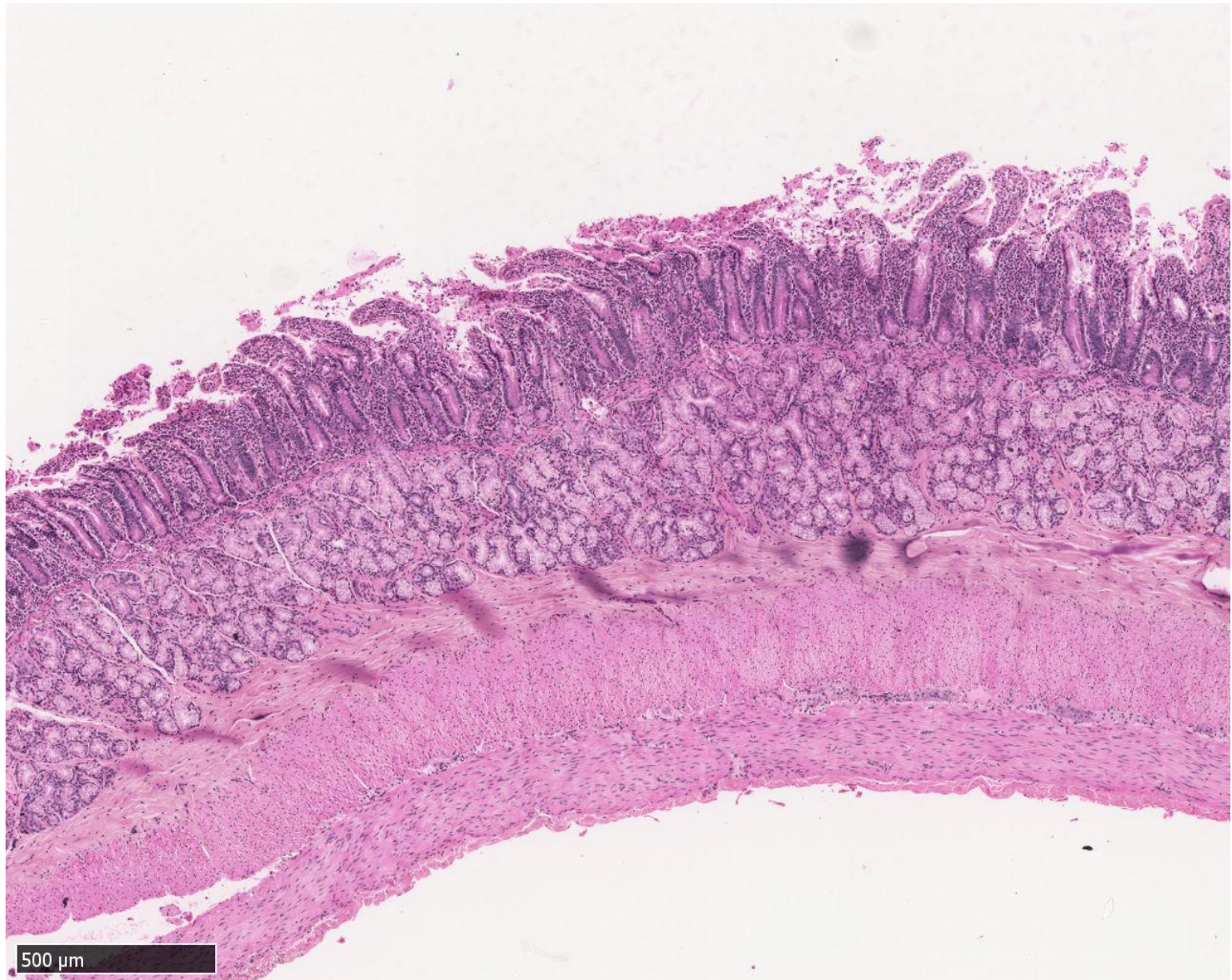


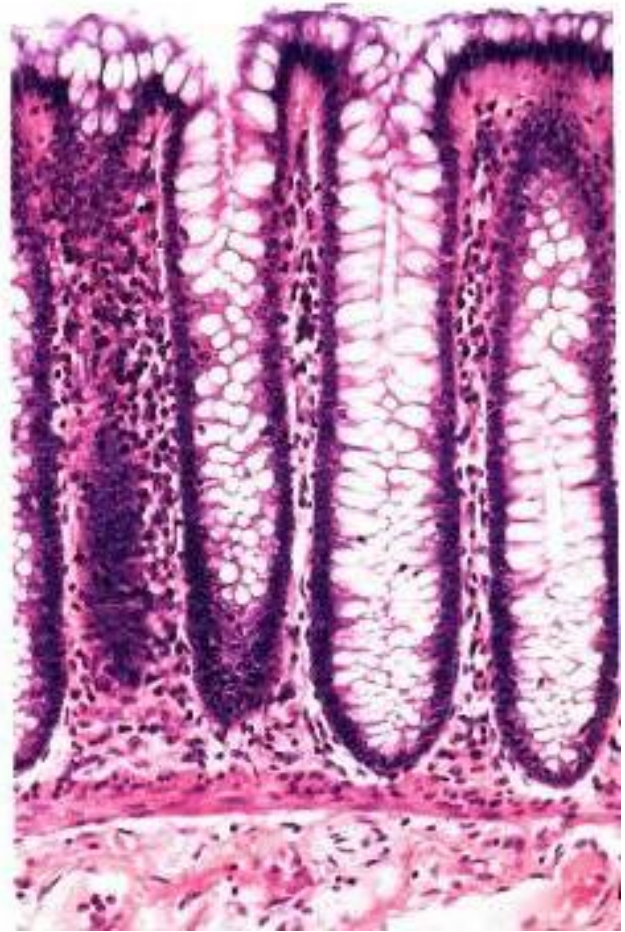
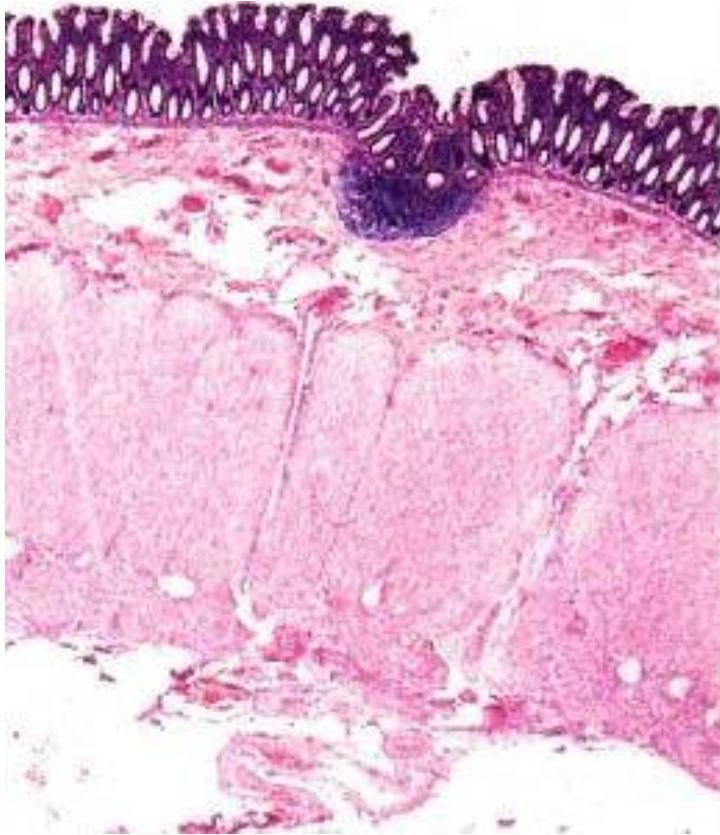
Entérocytes (+++)

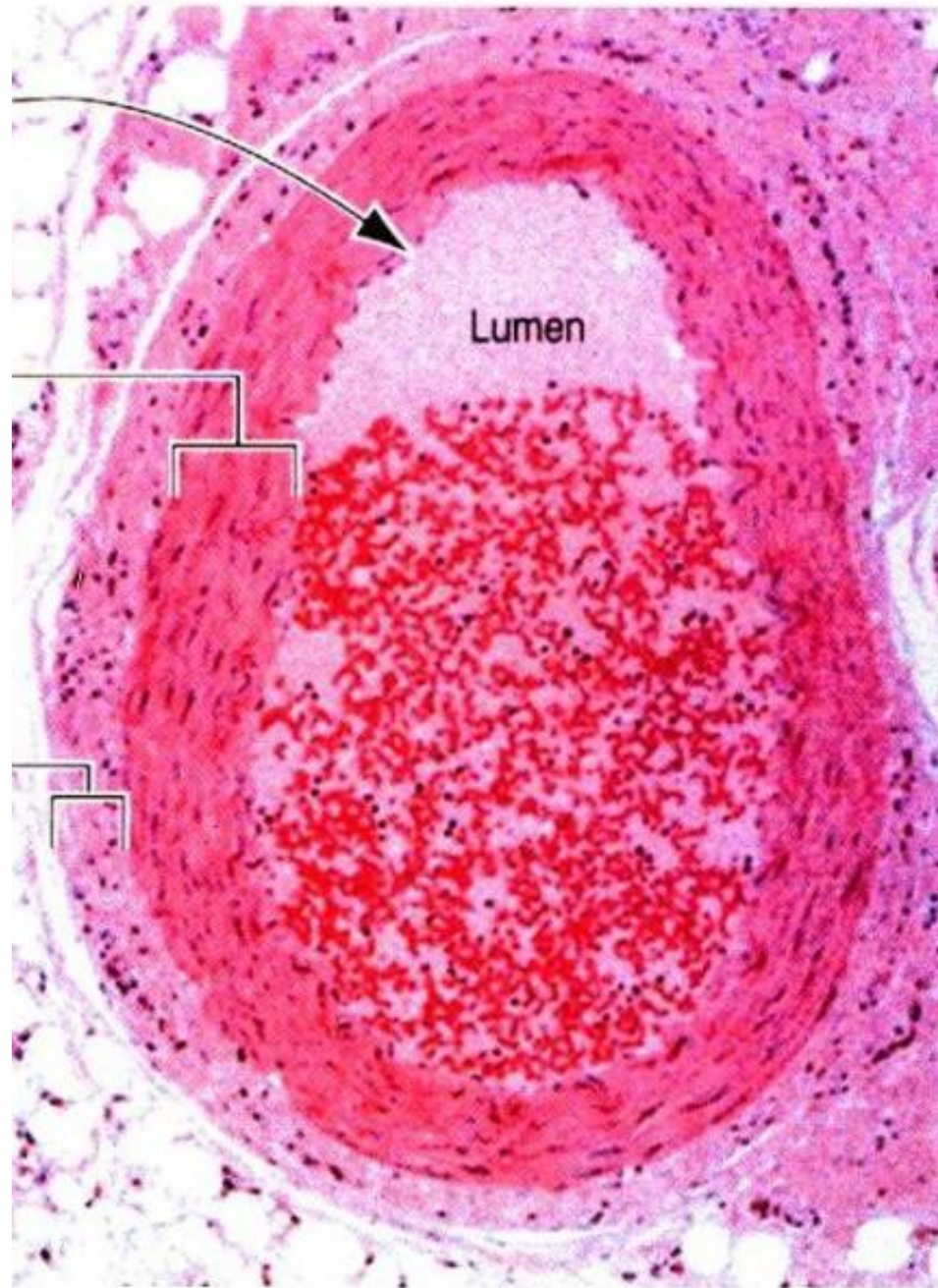
Cellule caliciforme



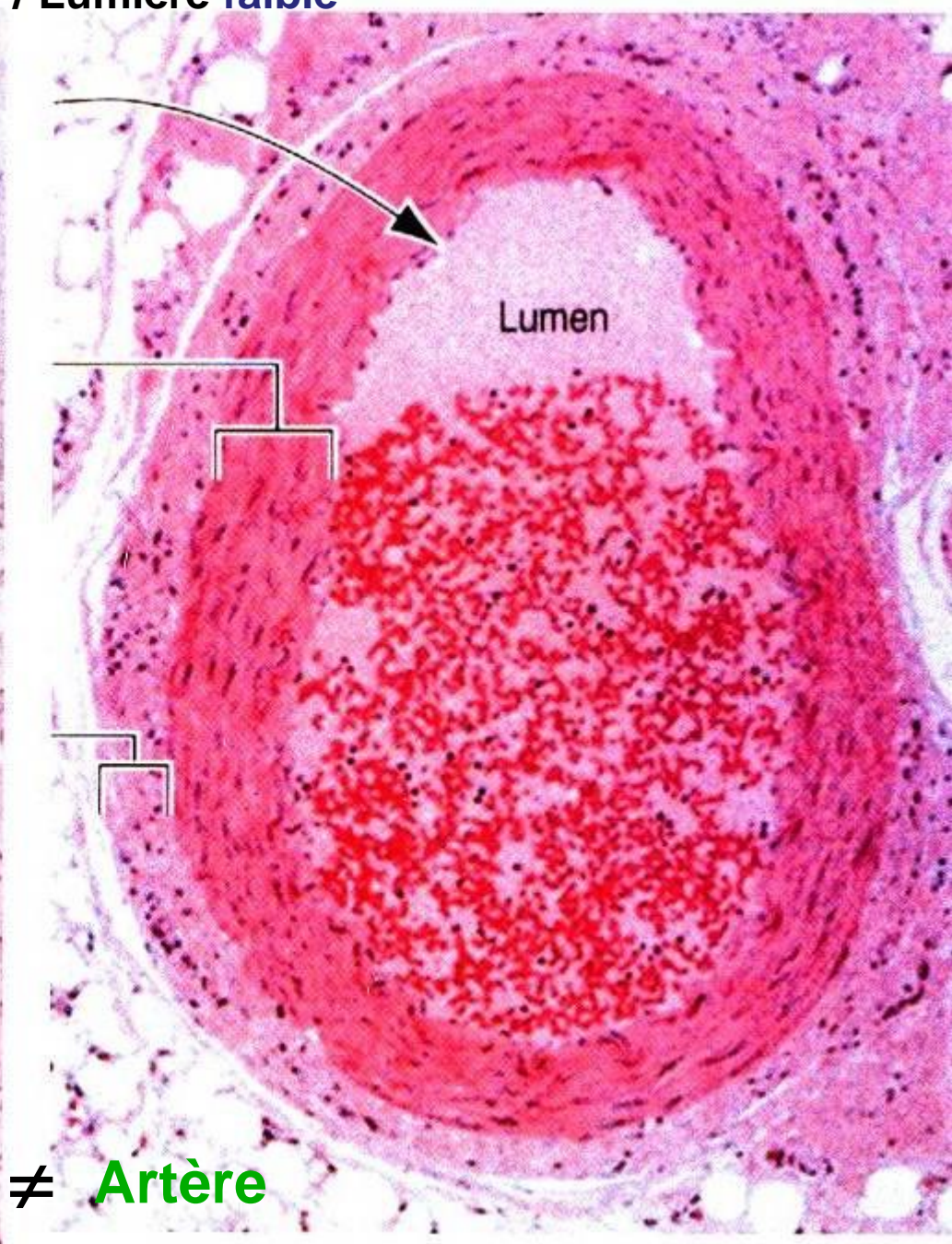
Intestin grêle



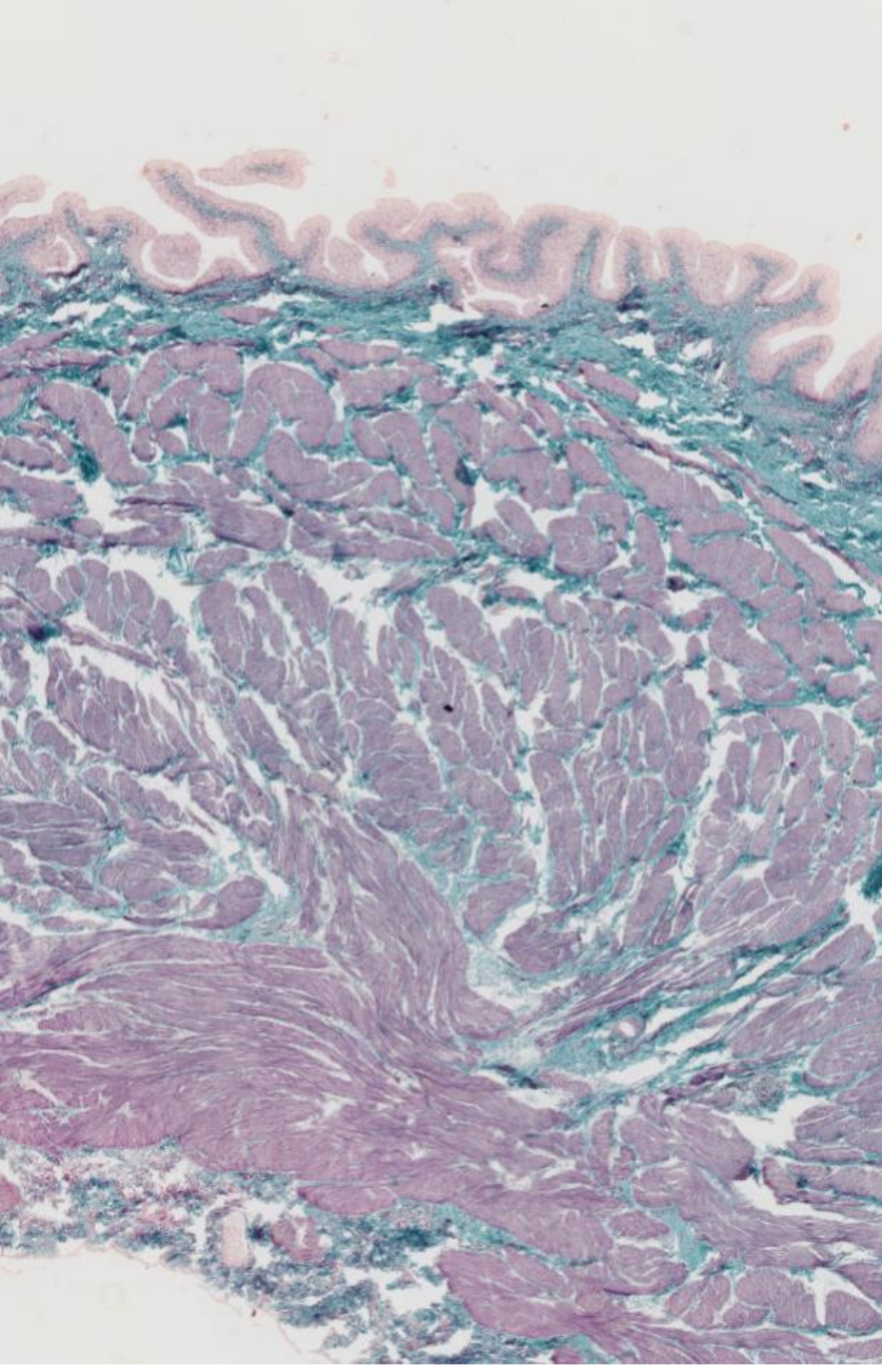


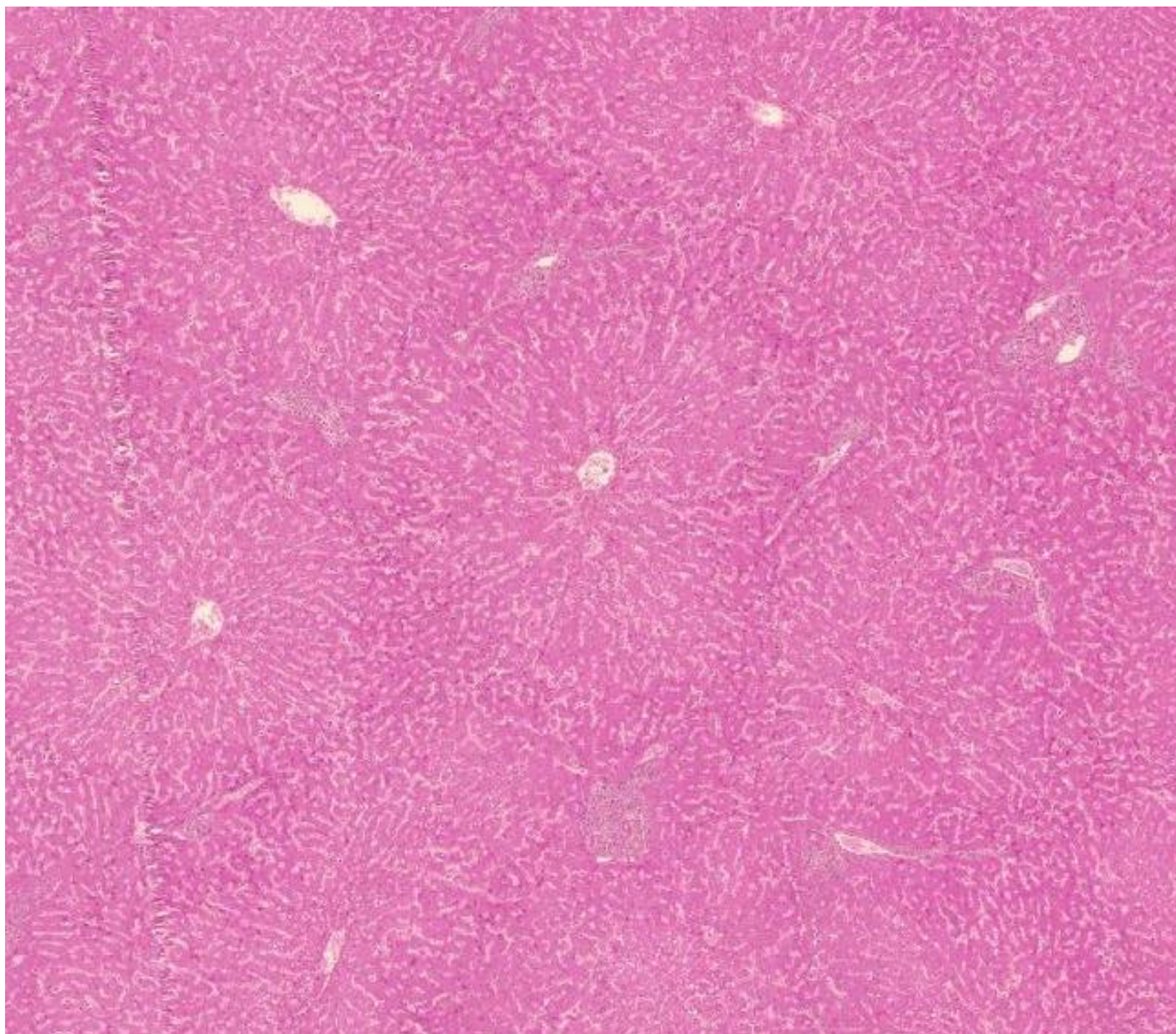


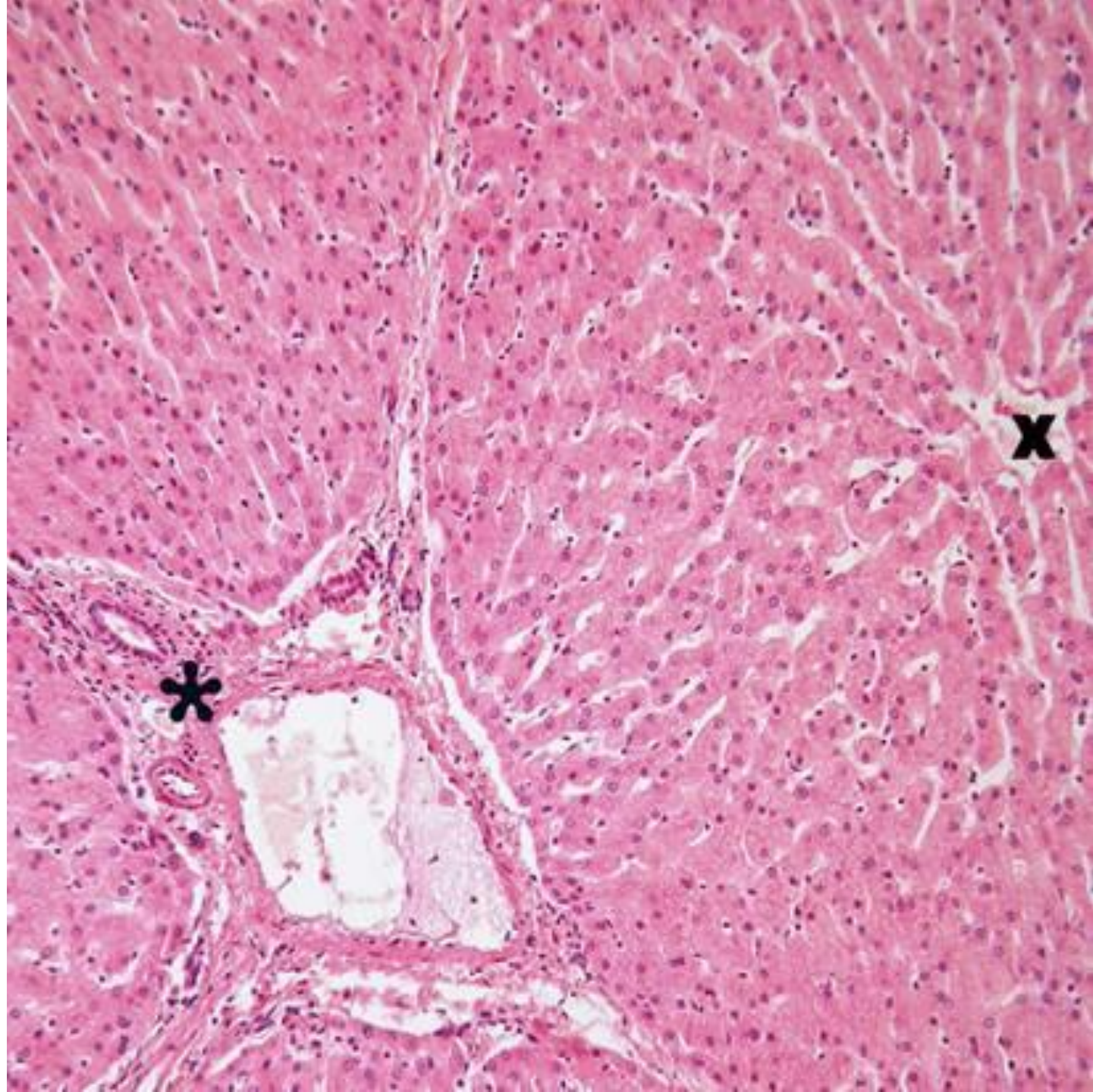
Rapport Paroi / Lumière faible

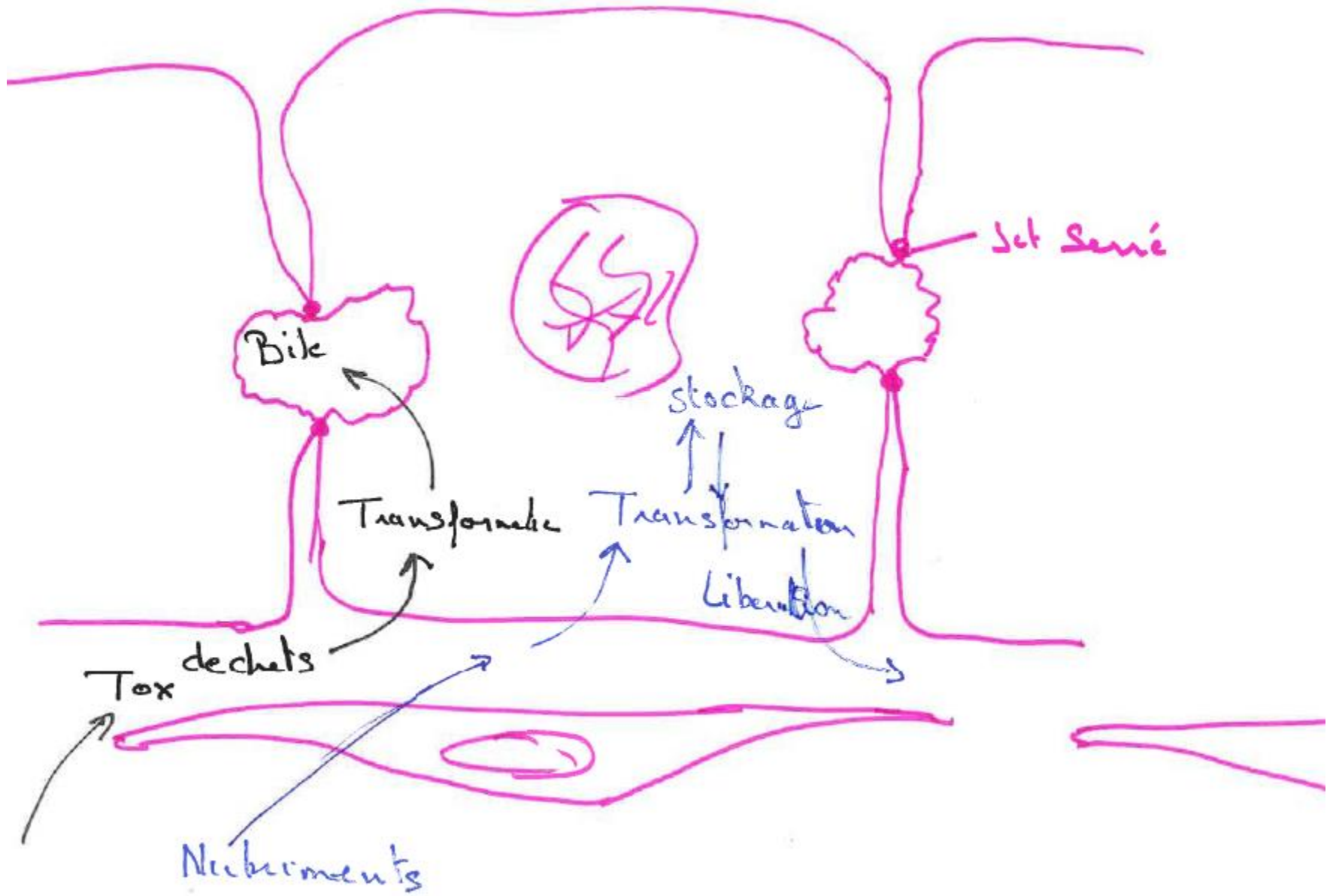


Veine \neq Artère









1

2

3

4

5

