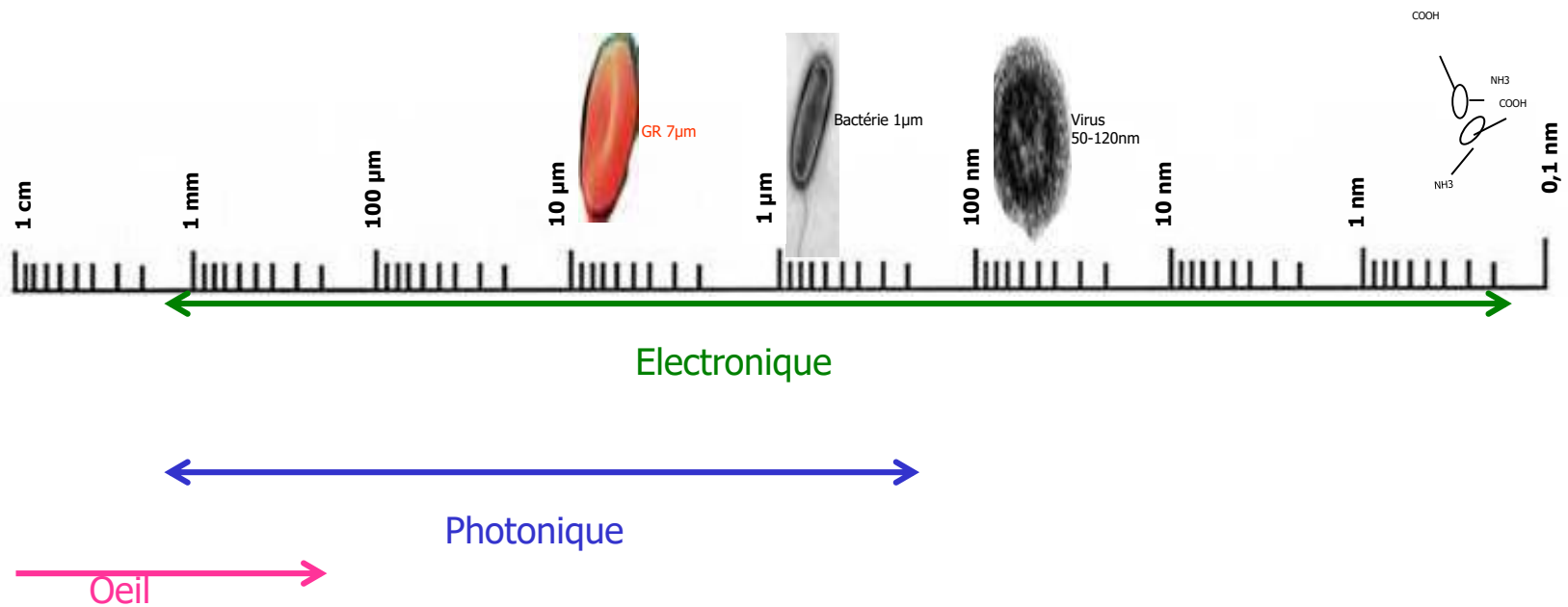


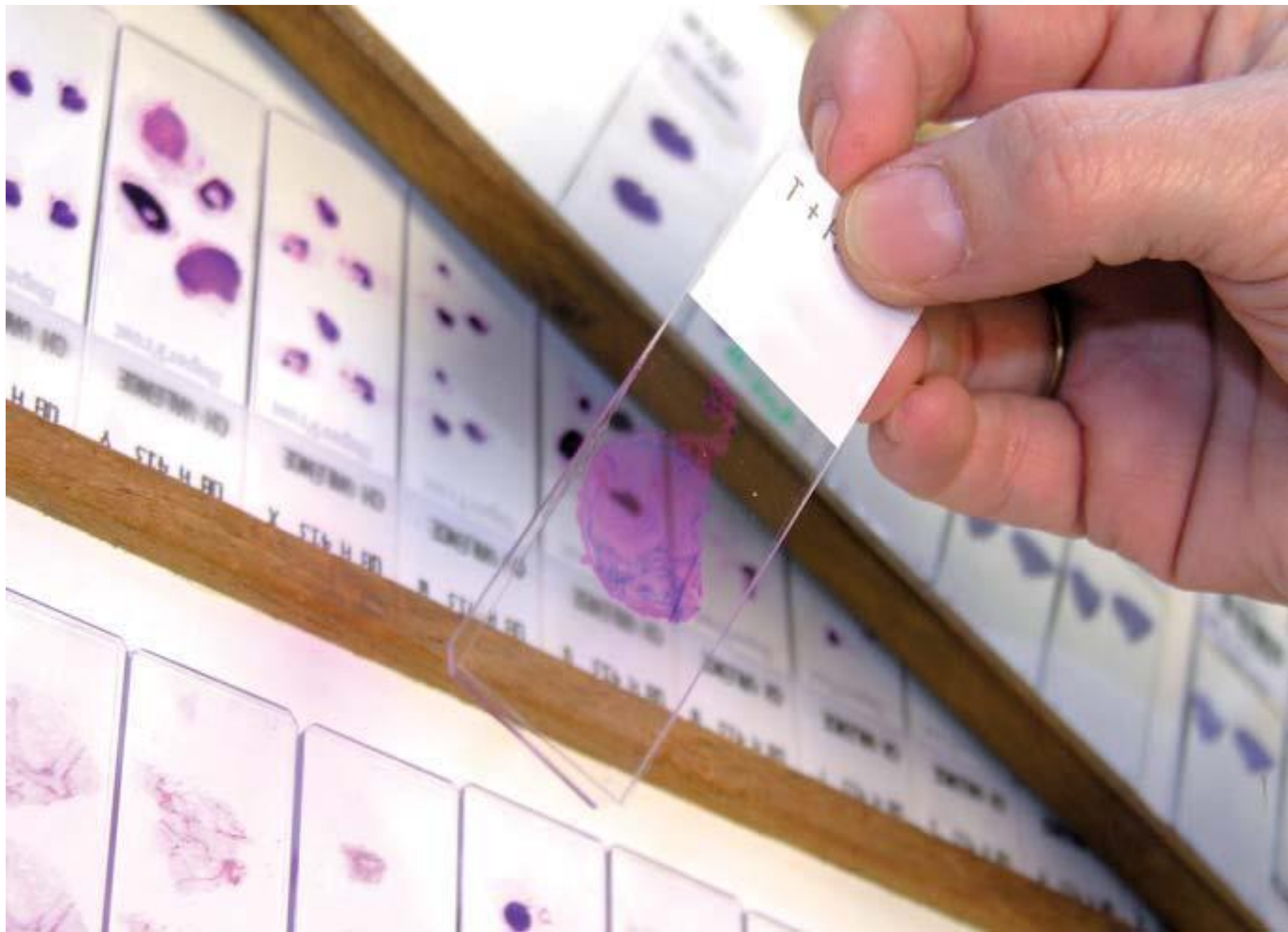
- Notion d'échelle en microscopie et marquage

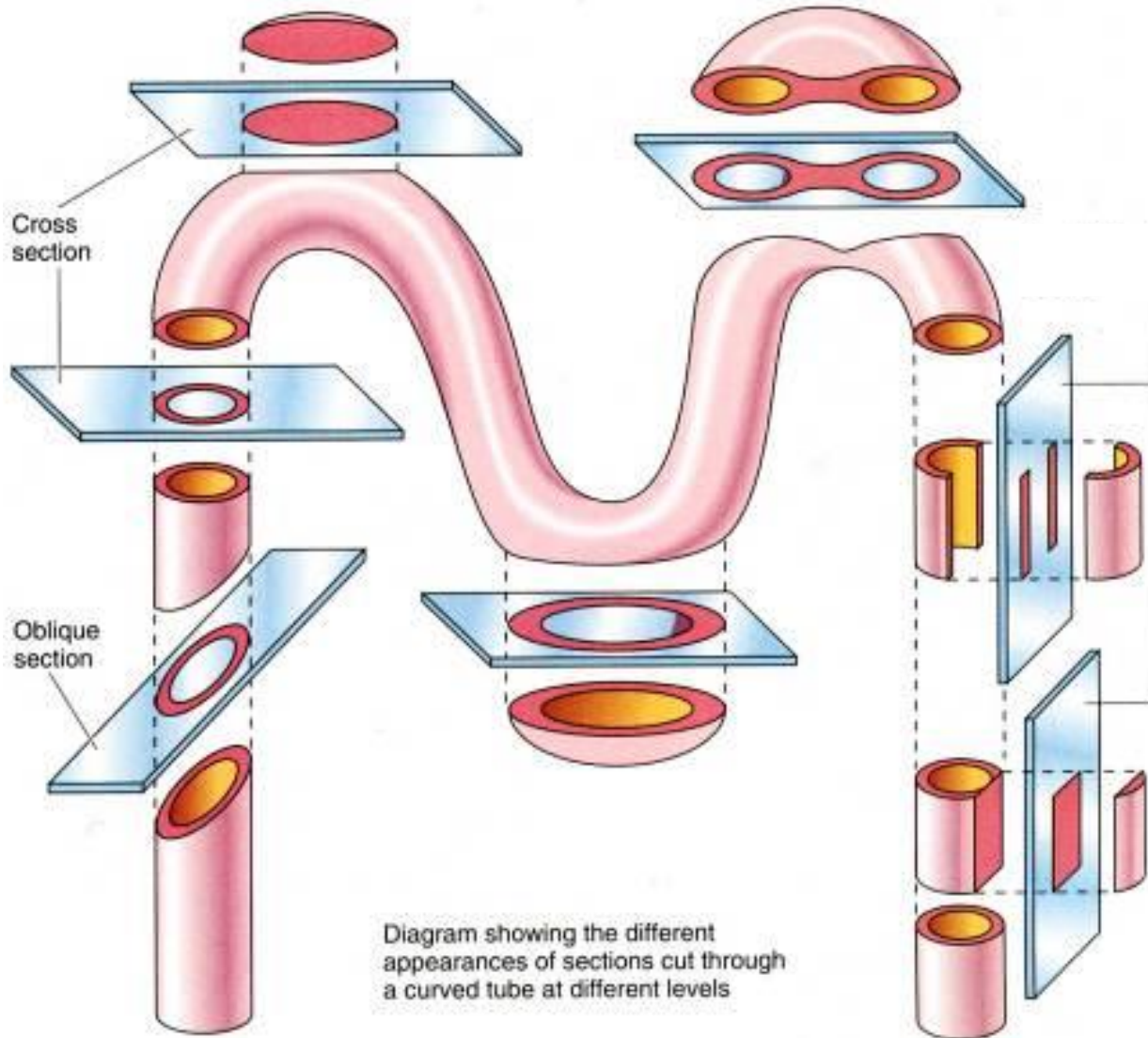
Echelles de mesure MO vs MET



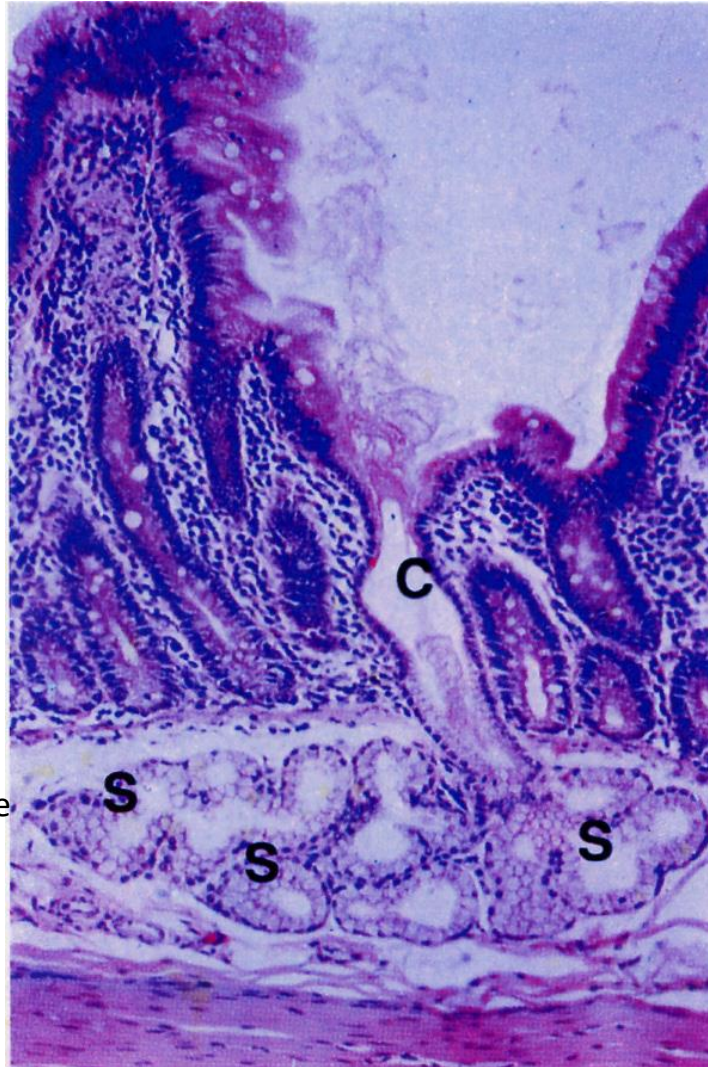








Tissus épithéliaux

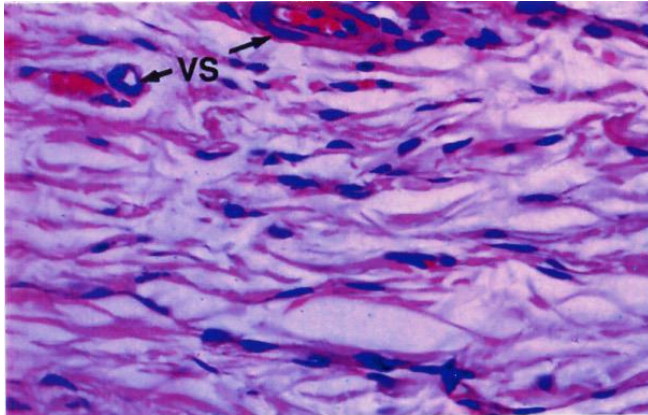


Épithélium de revêtement

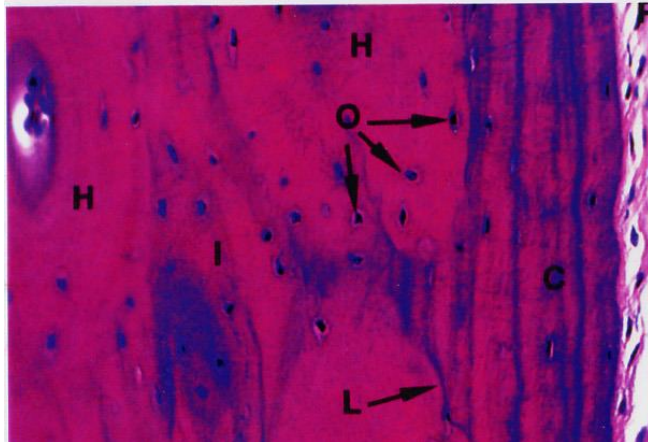
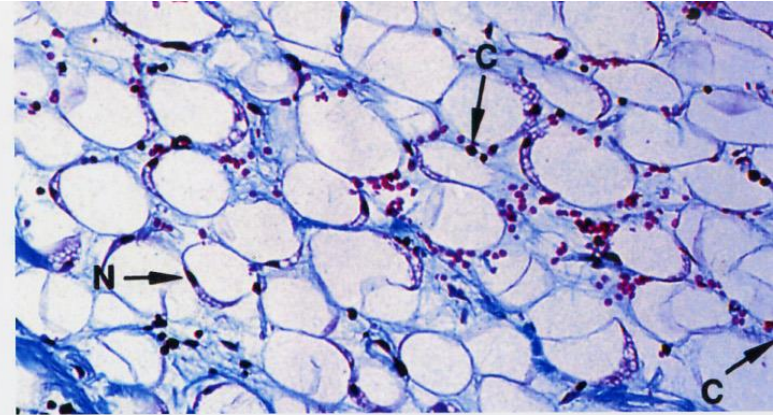
Epithélium glandulaire
(c : canal ; S : unités
sécrétrices)

Tissus conjonctifs

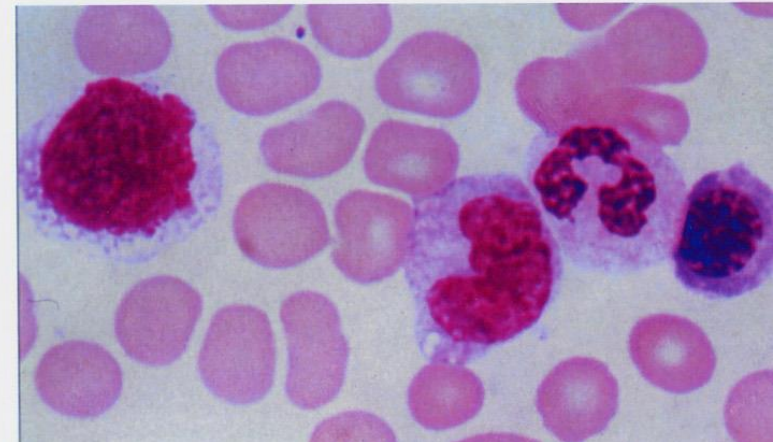
Non spécialisé



Adipeux blanc



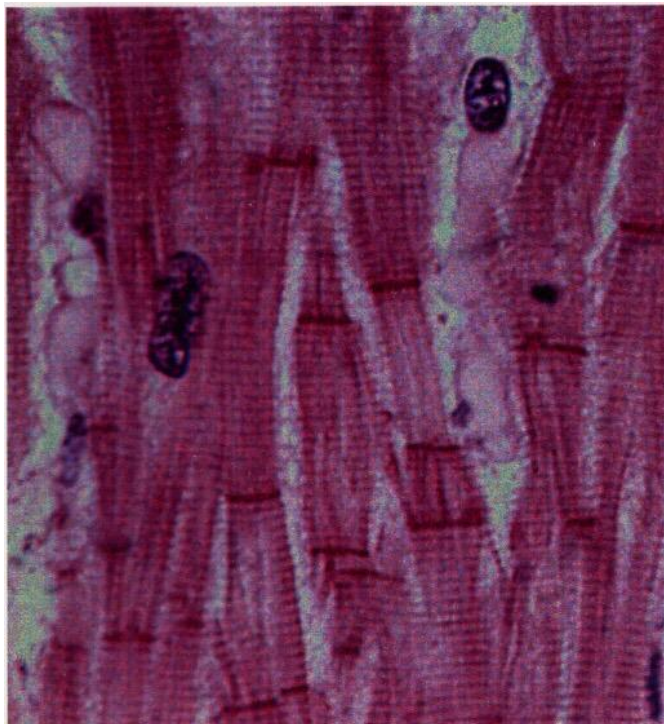
Osseux



Sang

Tissus musculaires

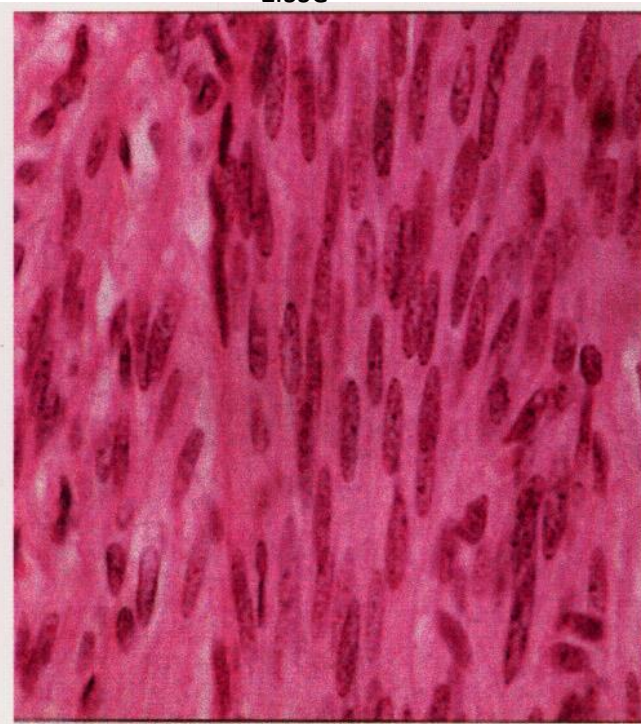
Cardiaque



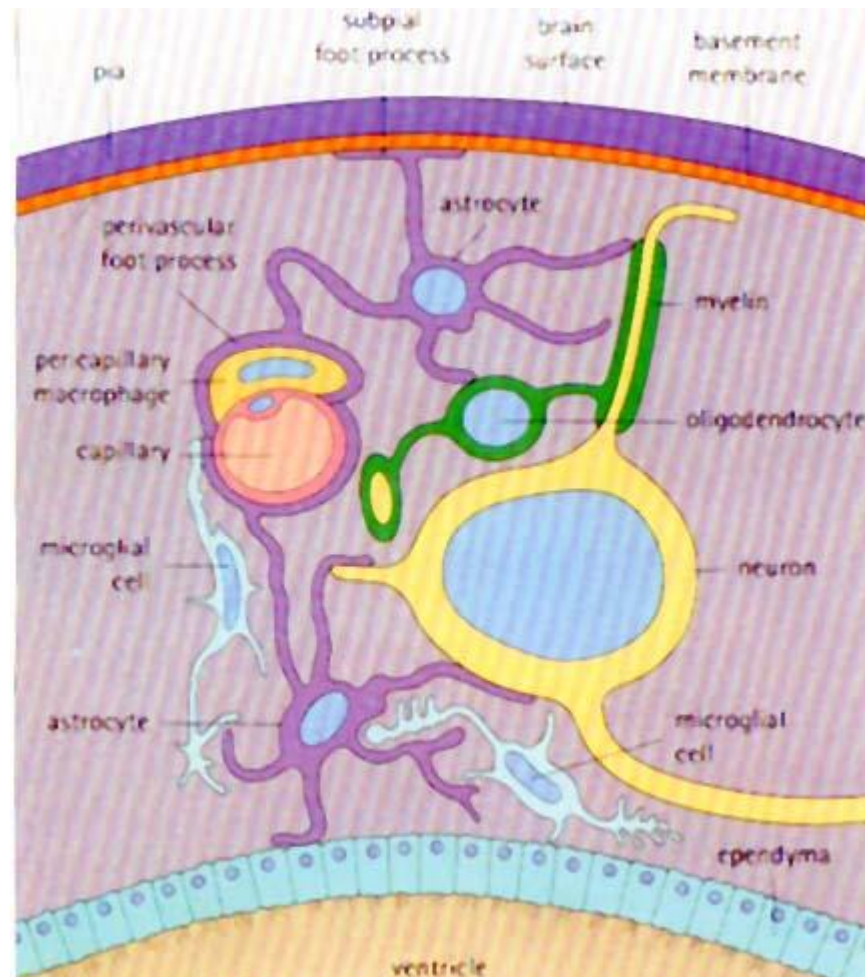
Strié squelettique et viscéral



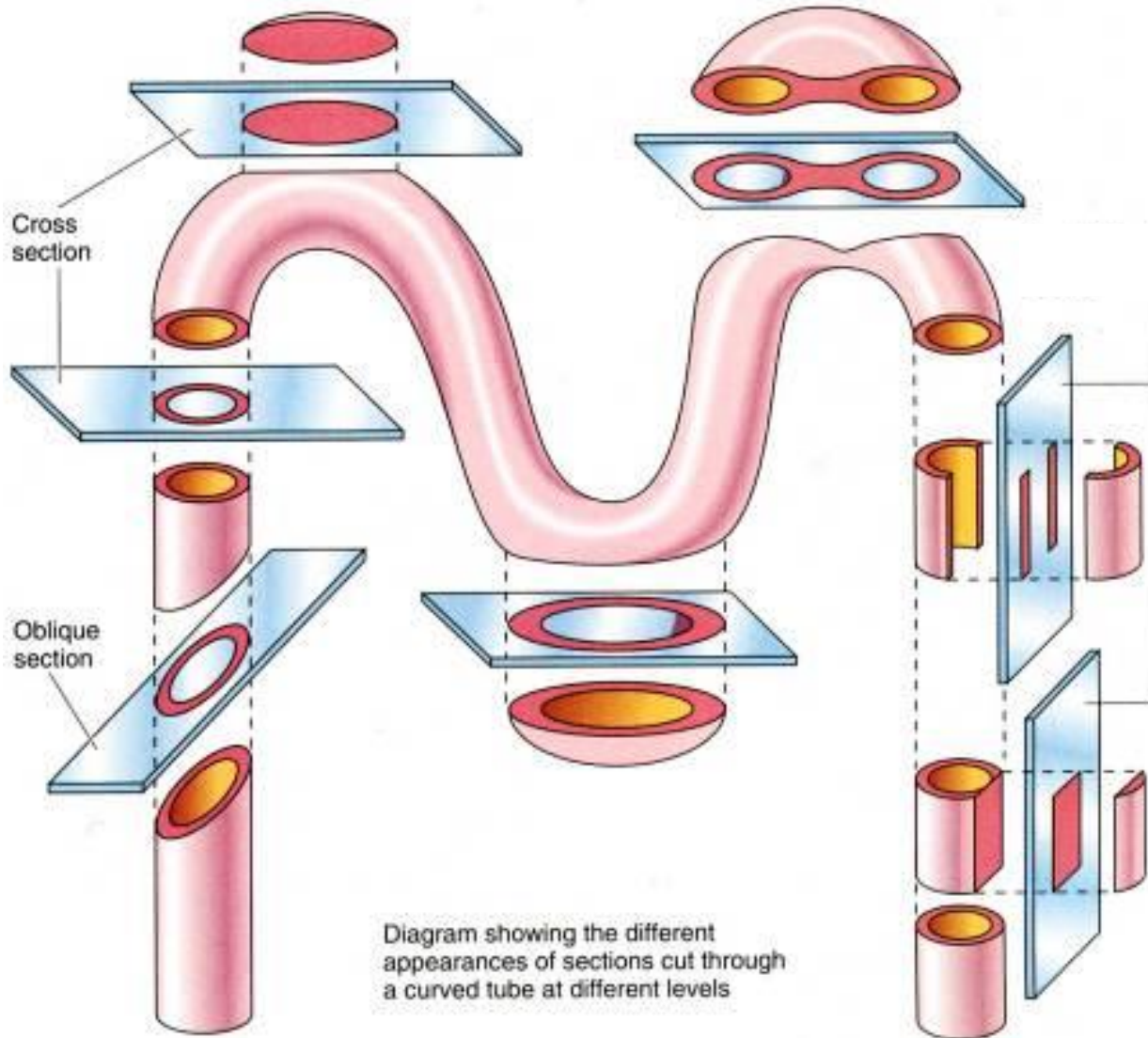
Lisse



Tissus nerveux



Neurone et glie dans le SNC



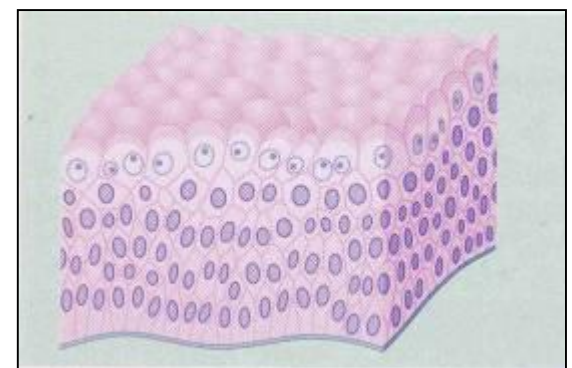
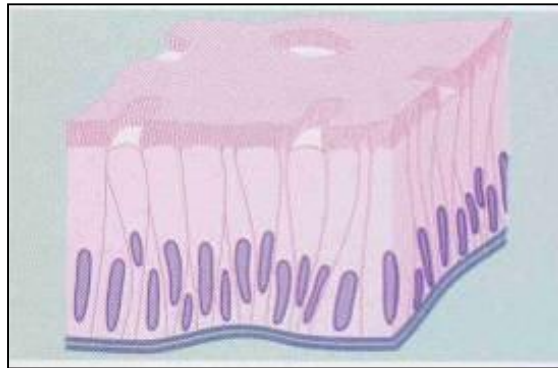
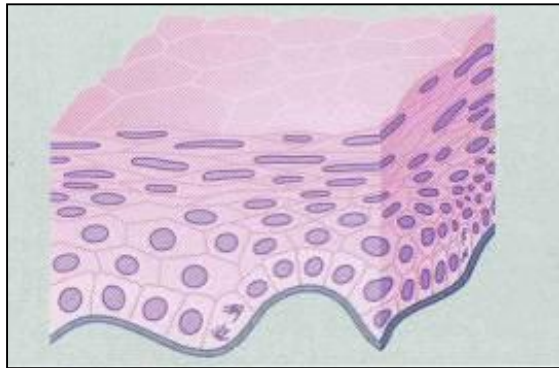
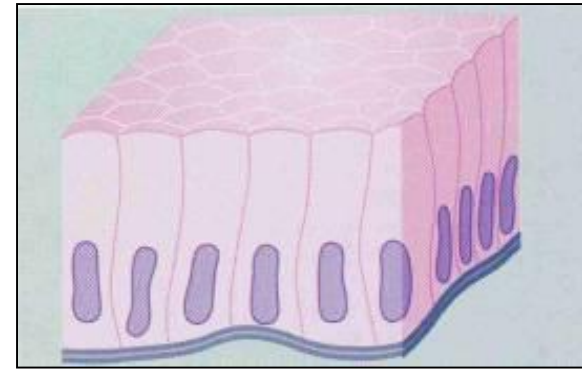
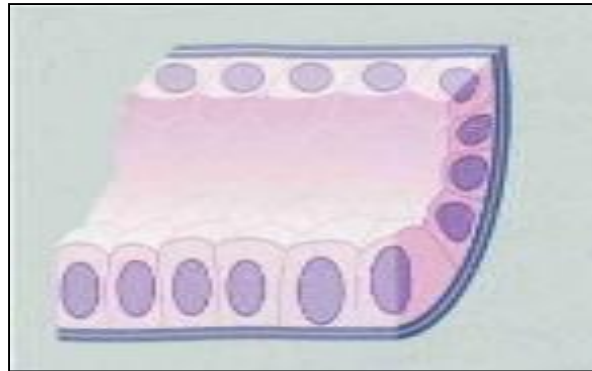
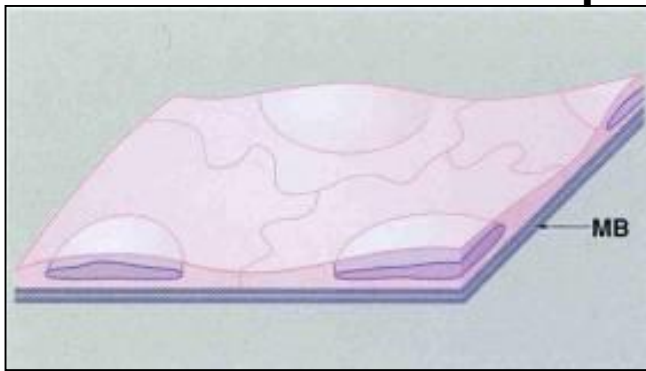
Les épithéliums

Nombre d'assises cellulaires

1 >>>>> SIMPLE

Plusieurs >>>>> STRATIFIÉES

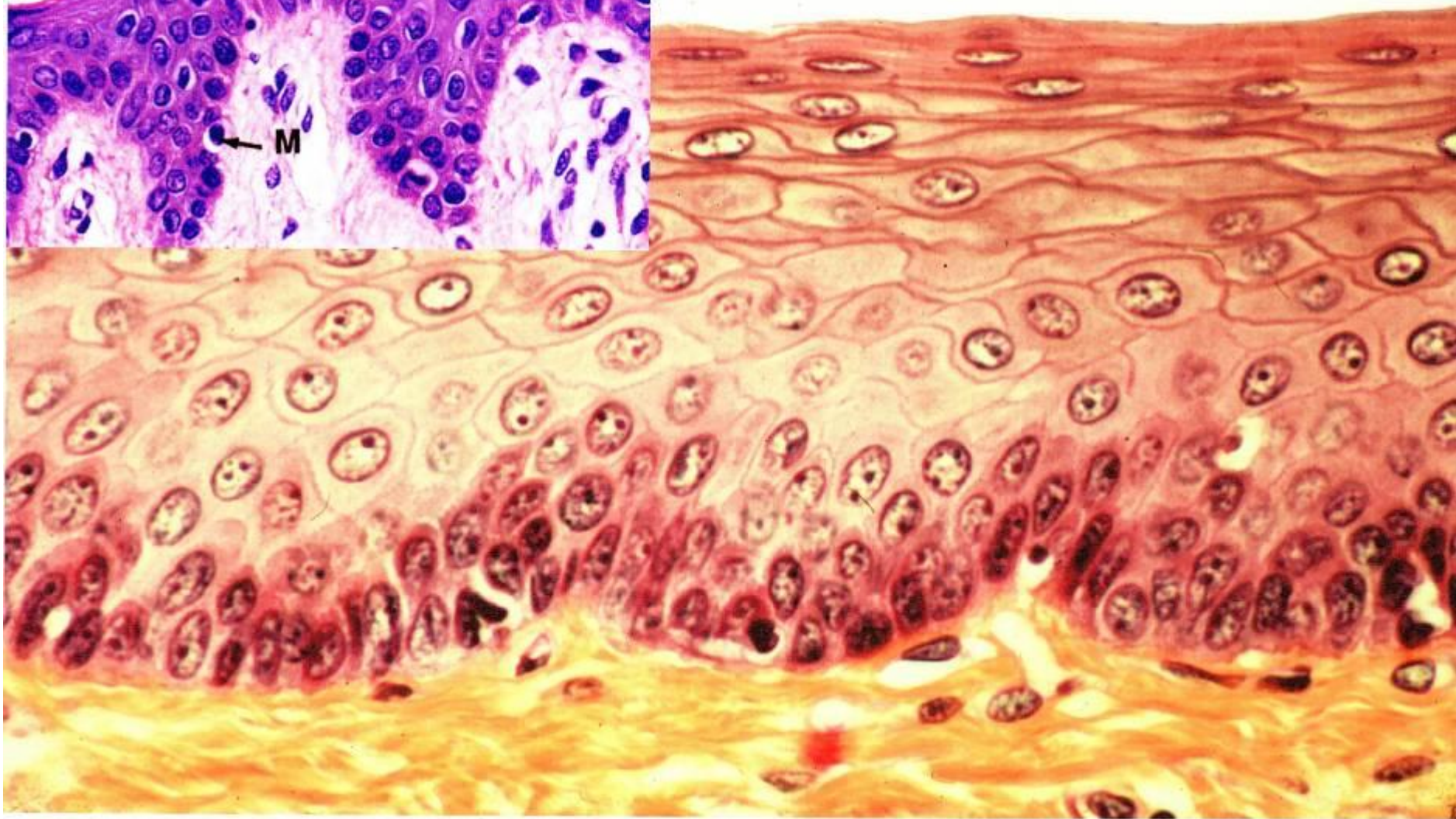
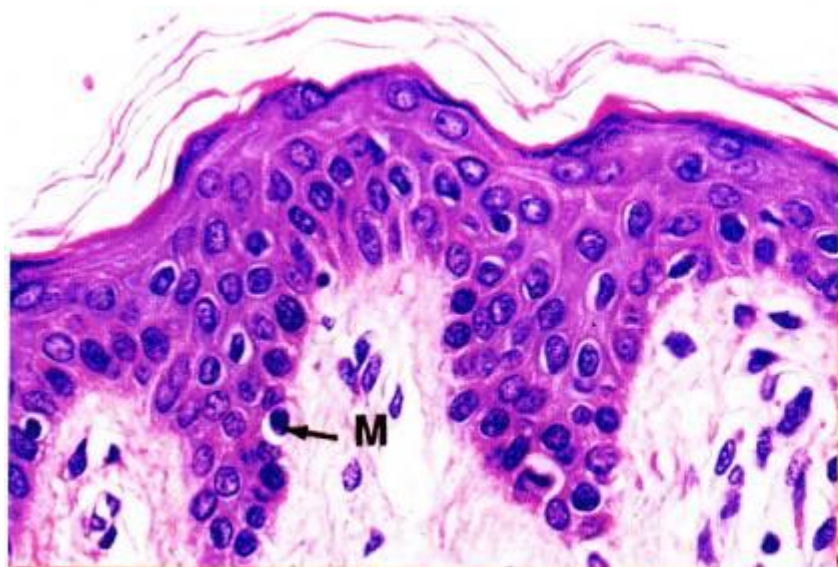
Forme des cellules épithéliales

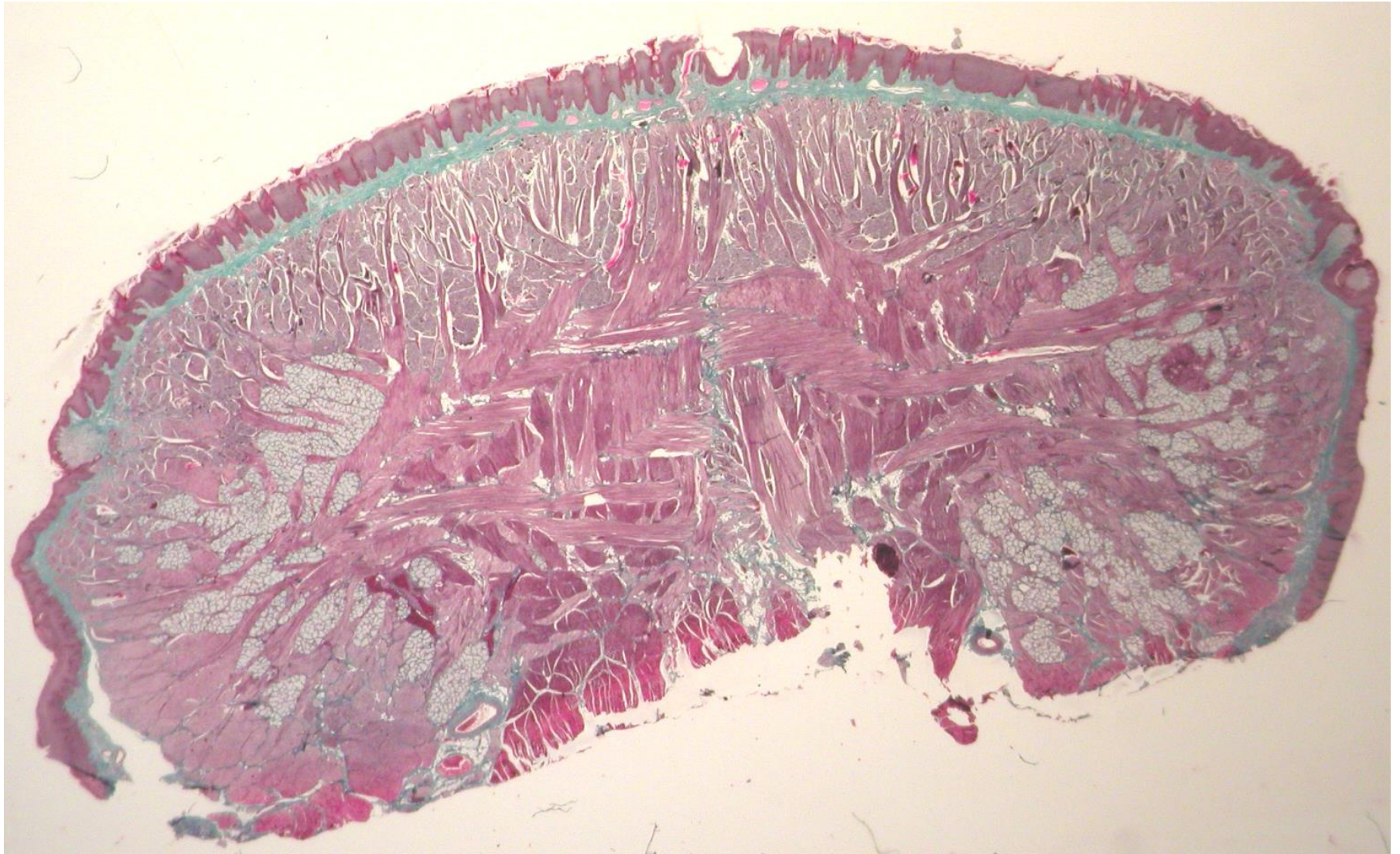


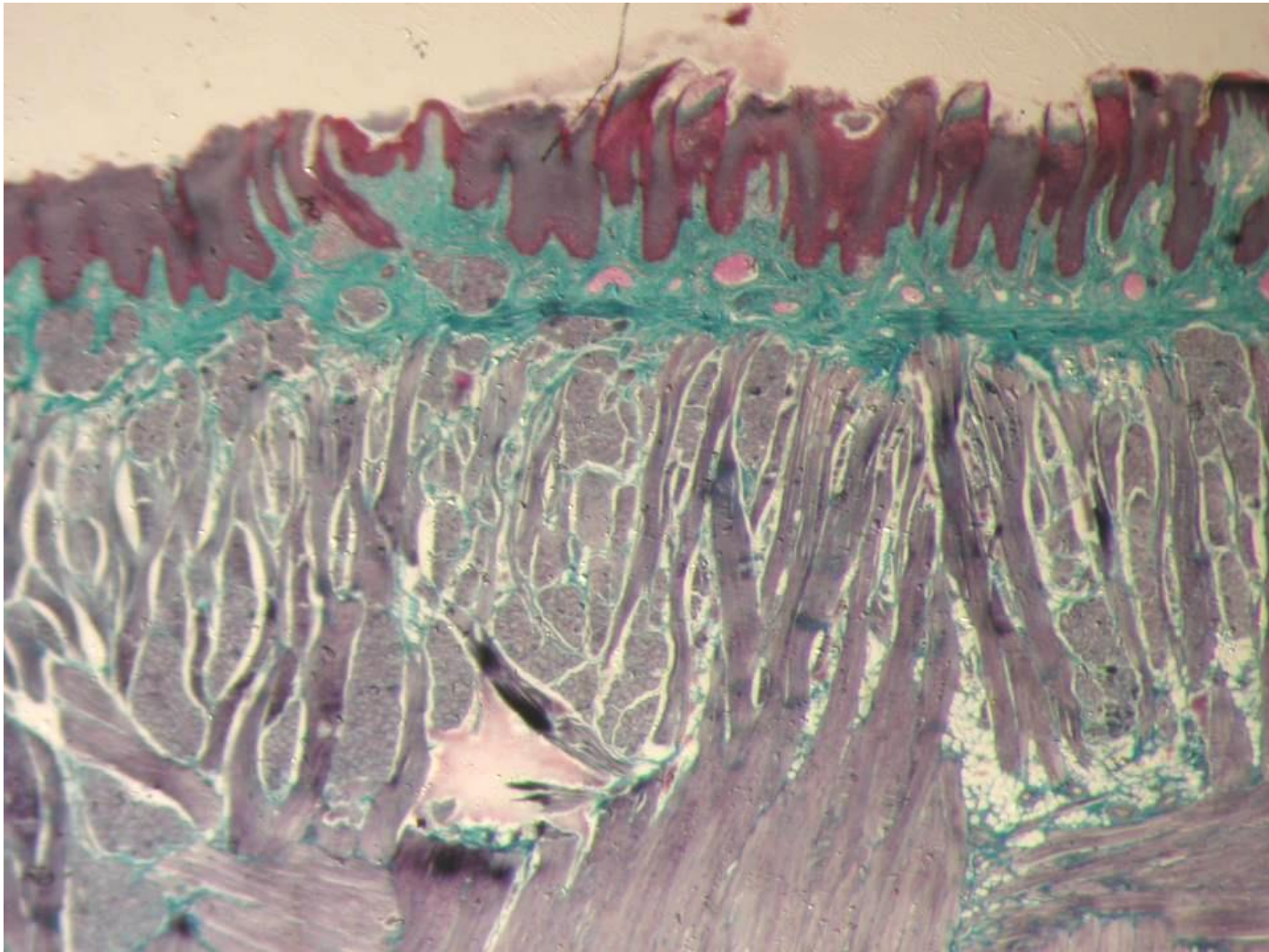
**Epithélium stratifié
pavimenteux**

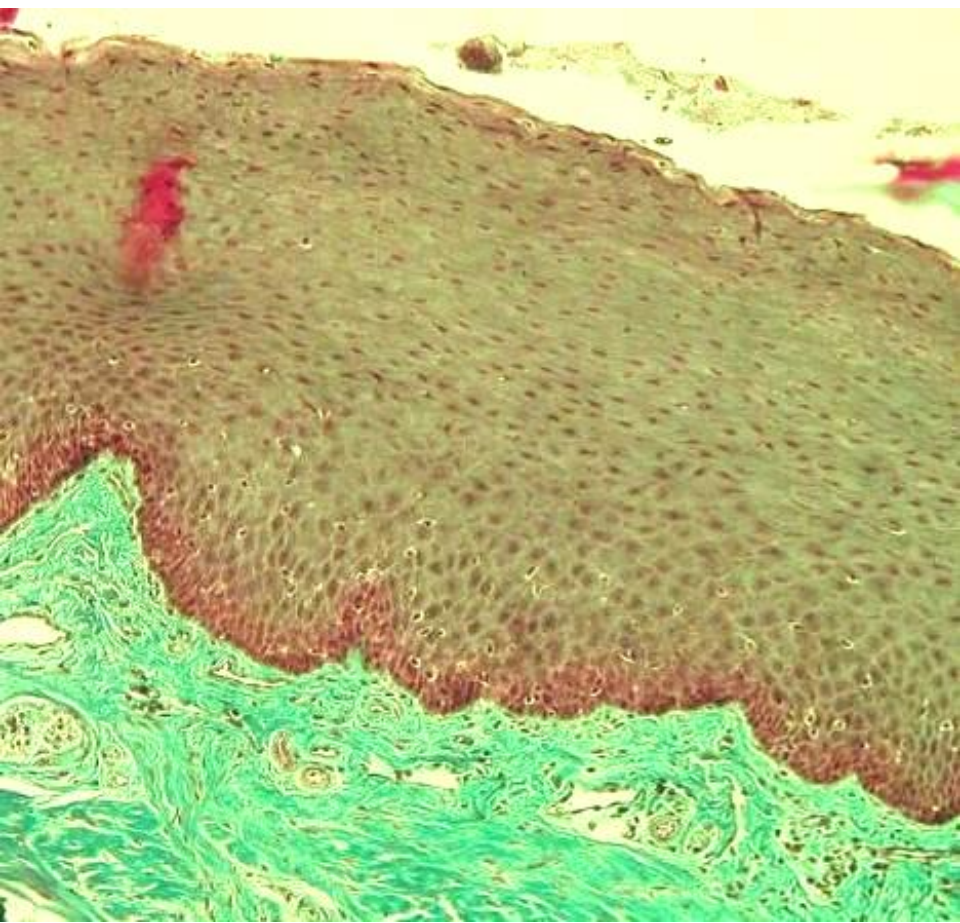
**Epithélium pseudostratifié
prismatique cilié**

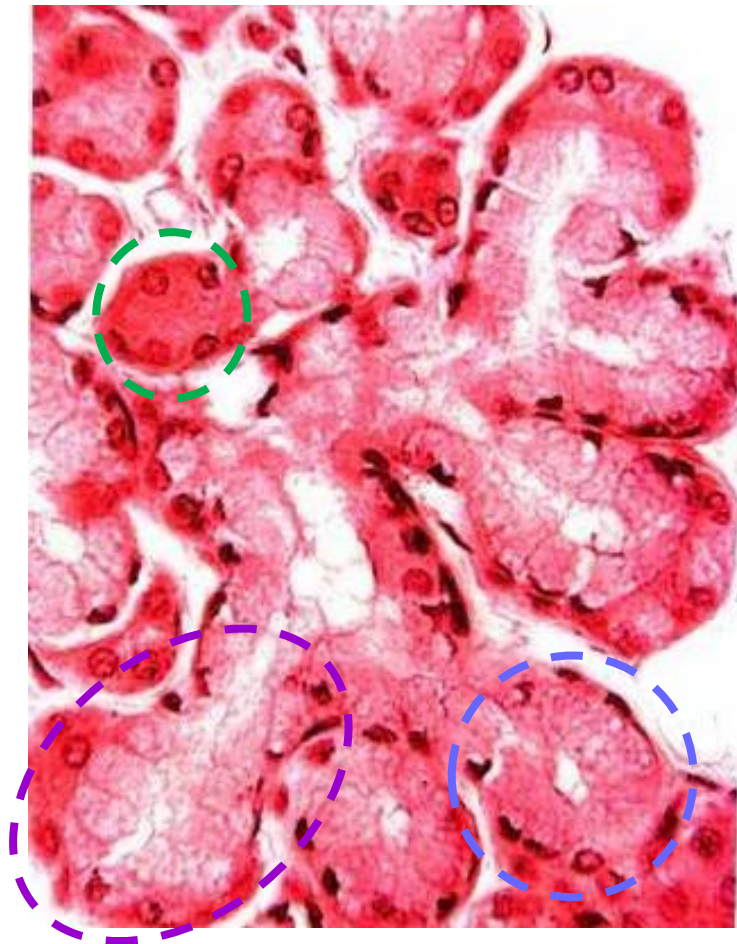
**Epithélium stratifié
Cubique**







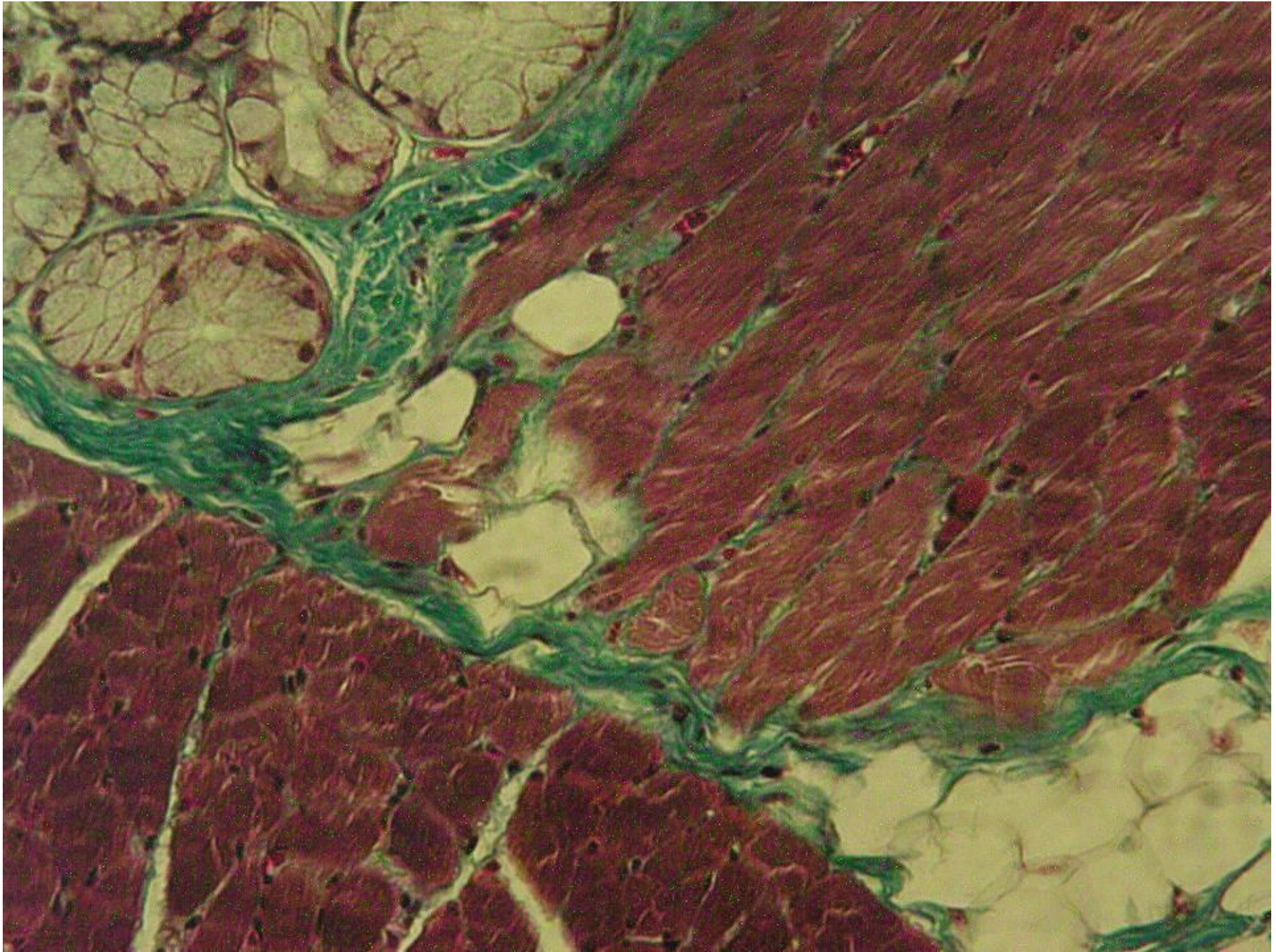


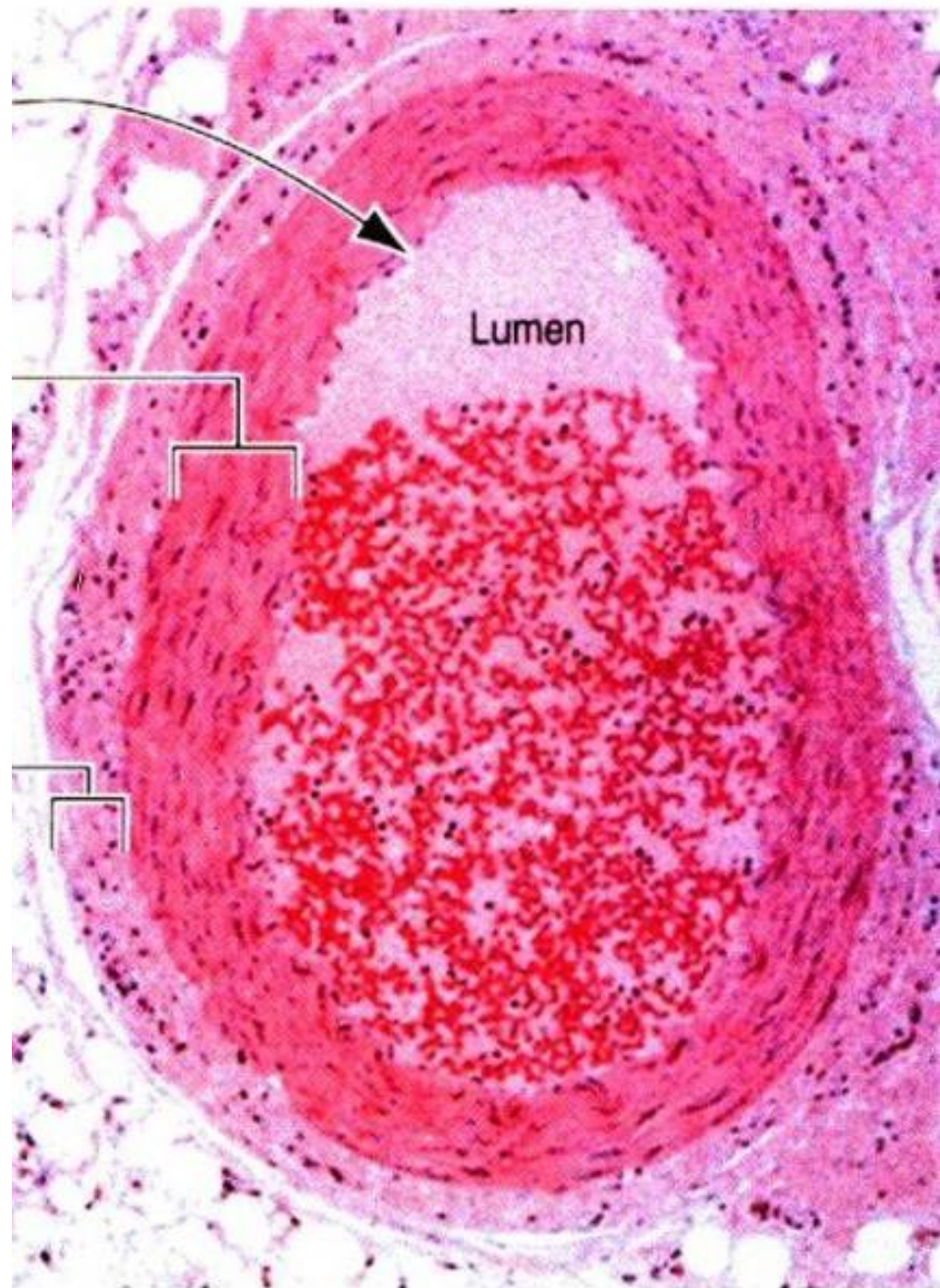


Acinus séreux

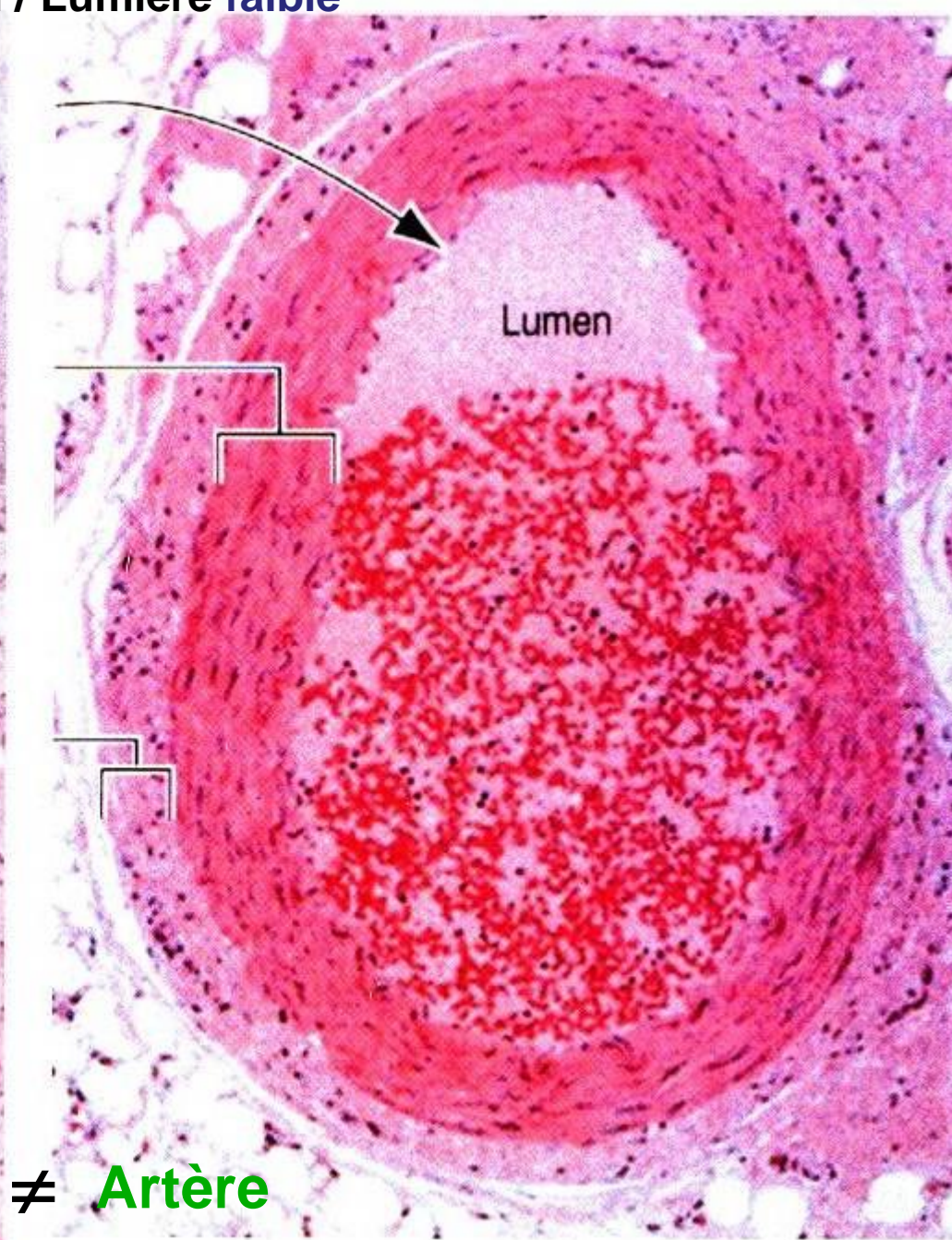
Acinus muqueux

Tubulo-acinus séro-muqueux



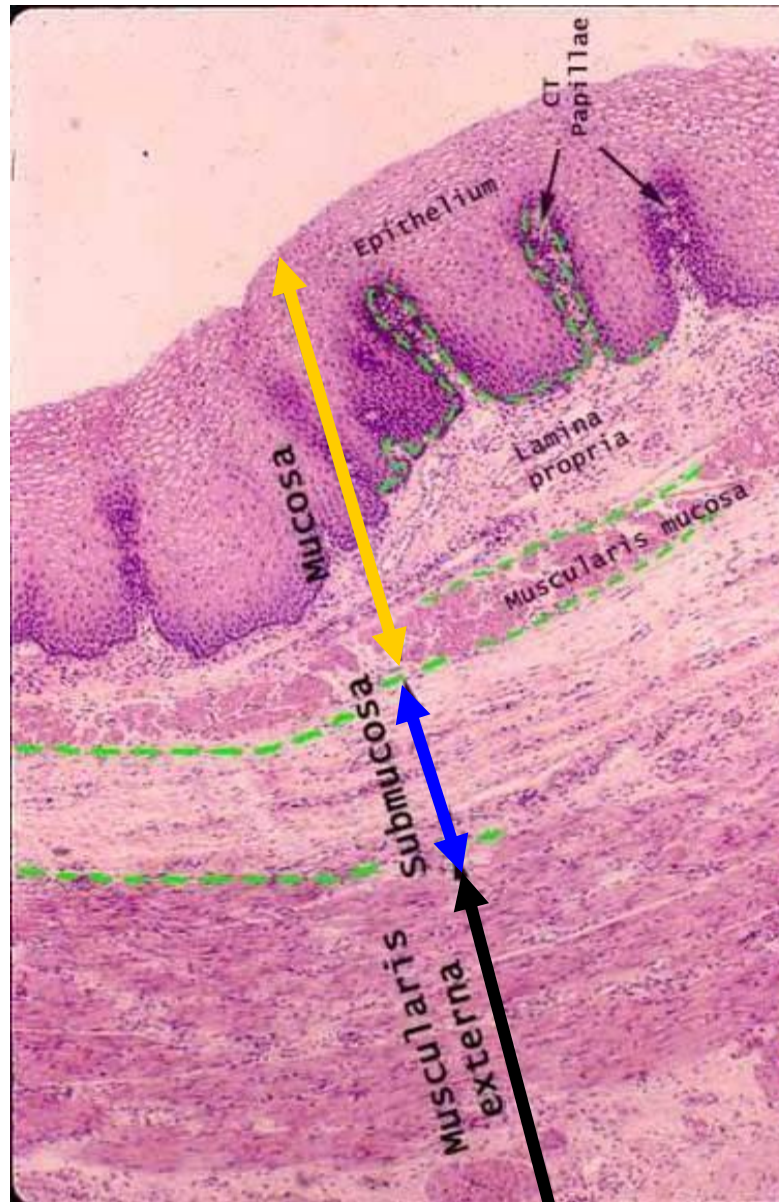


Rapport Paroi / Lumière faible



Veine \neq Artère

Tube Digestif : 4 couches



Epithélium

Muqueuse

Chorion

MsMq

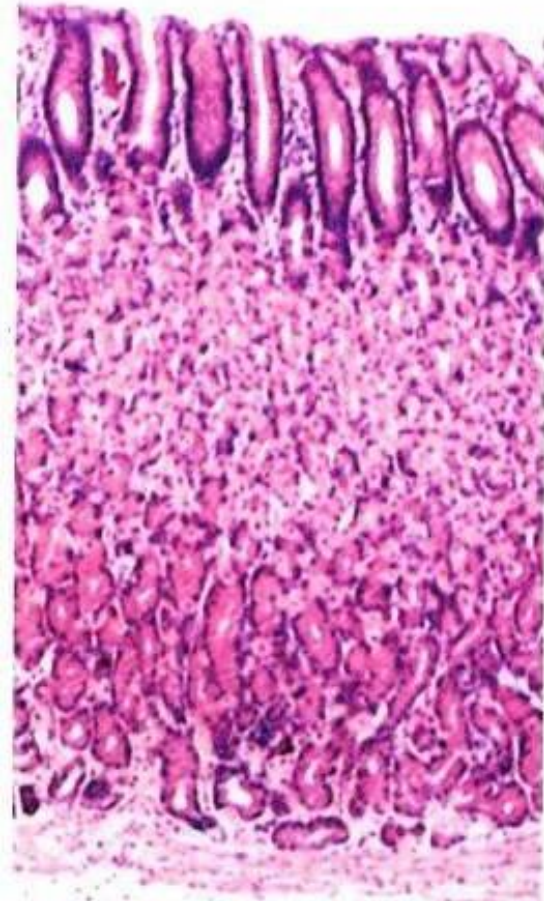
Sous Muqueuse

Musculeuse

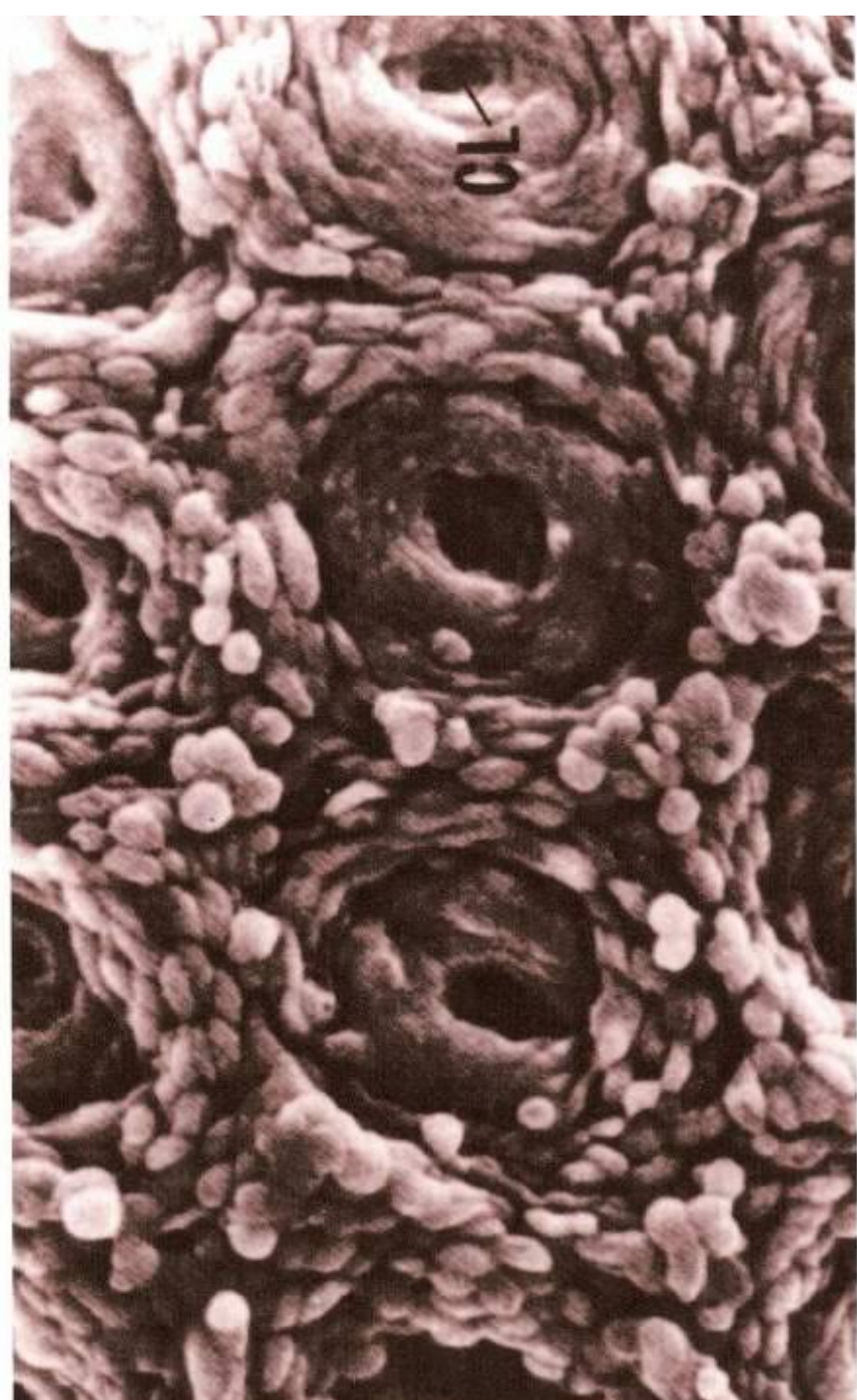
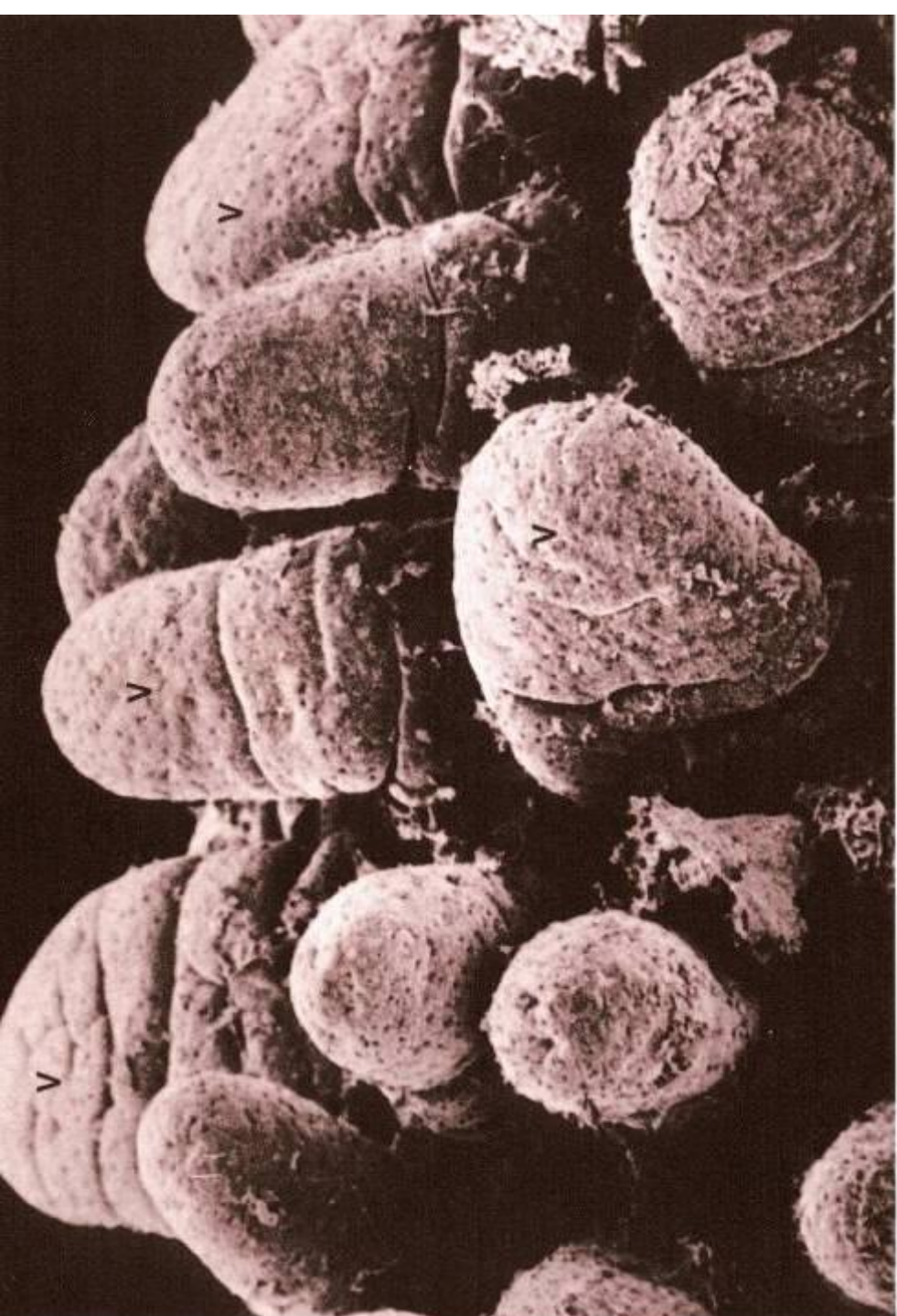
Adventice

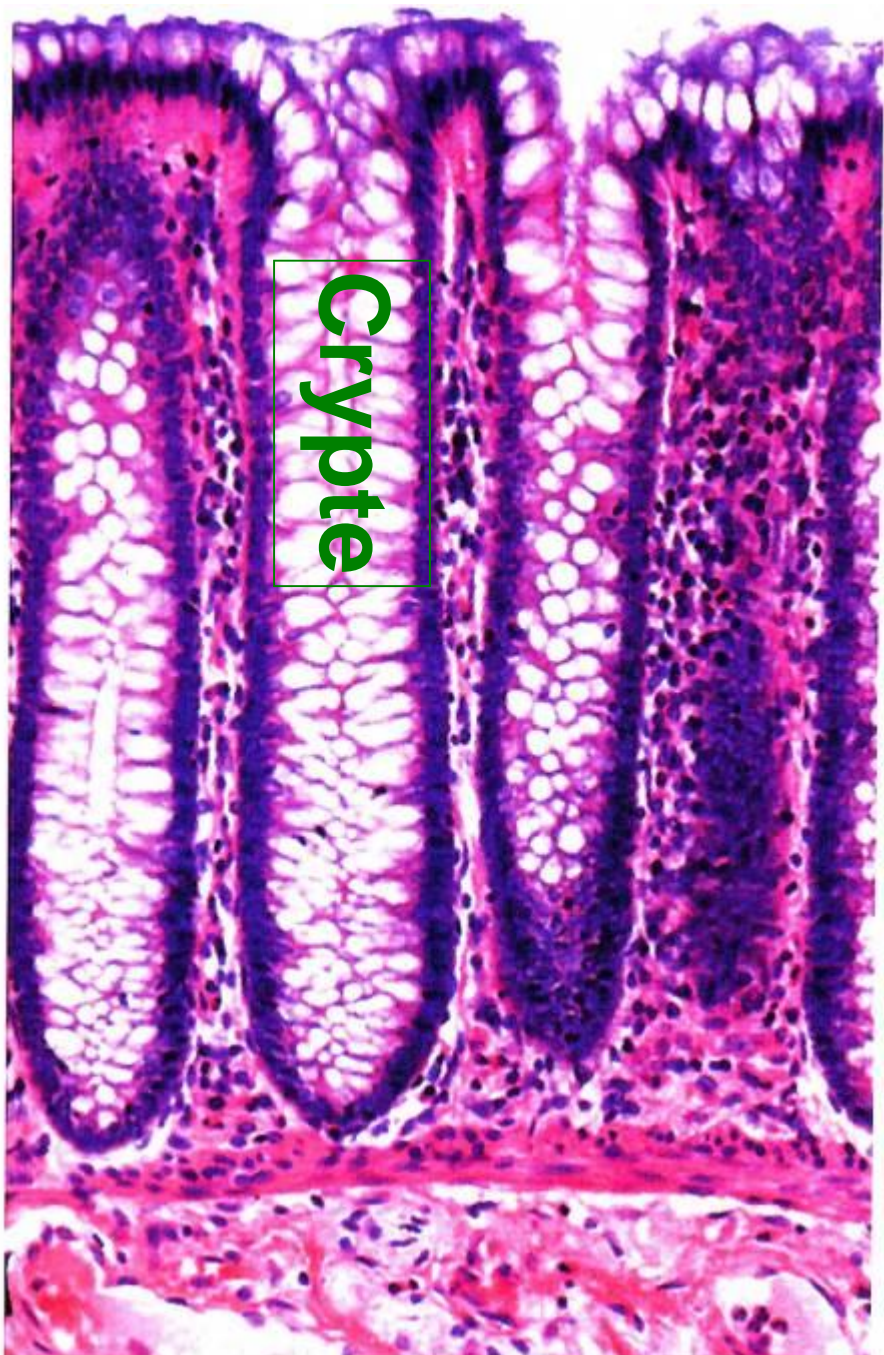


Villosités



Cryptes





villosités

ET

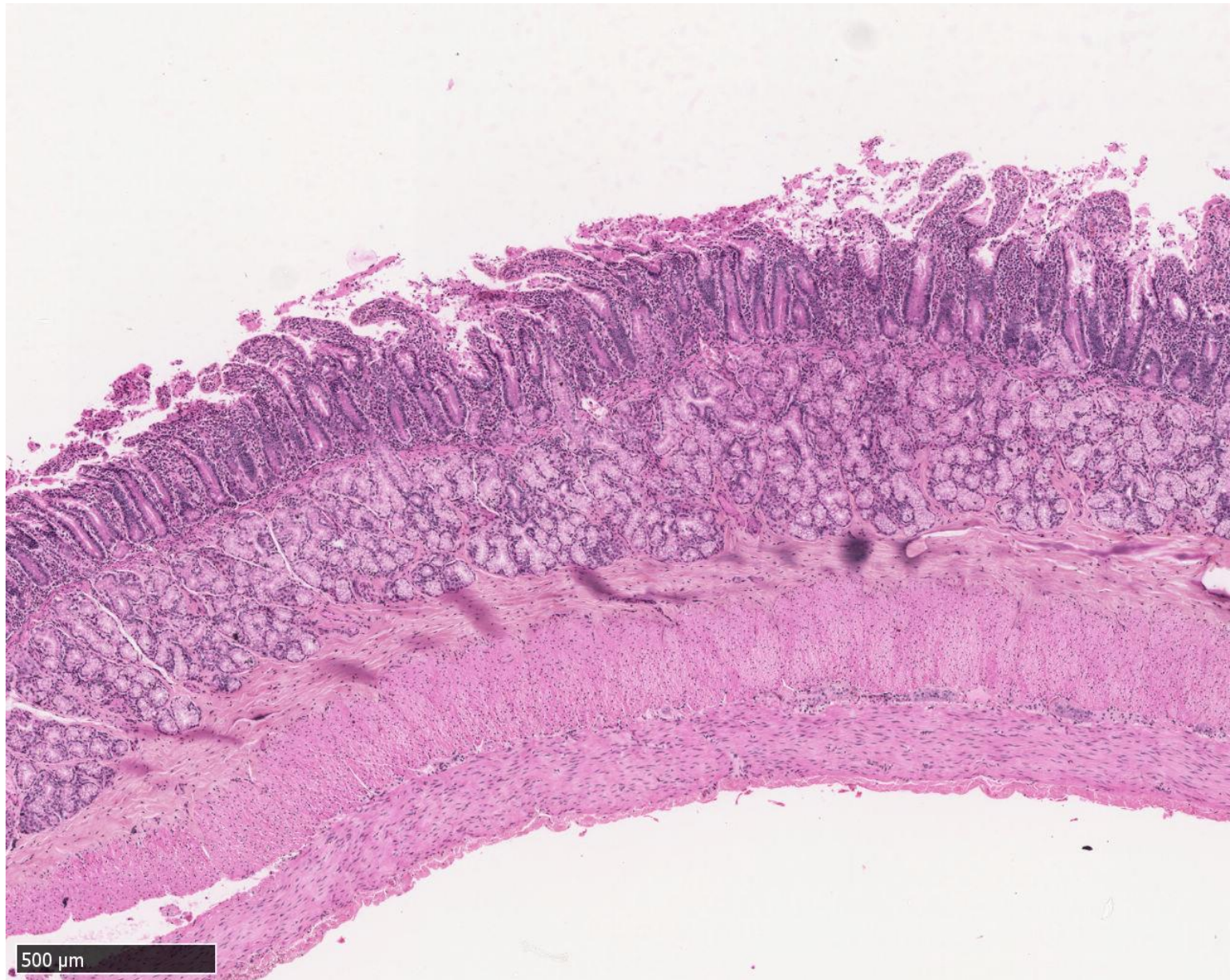
crypte

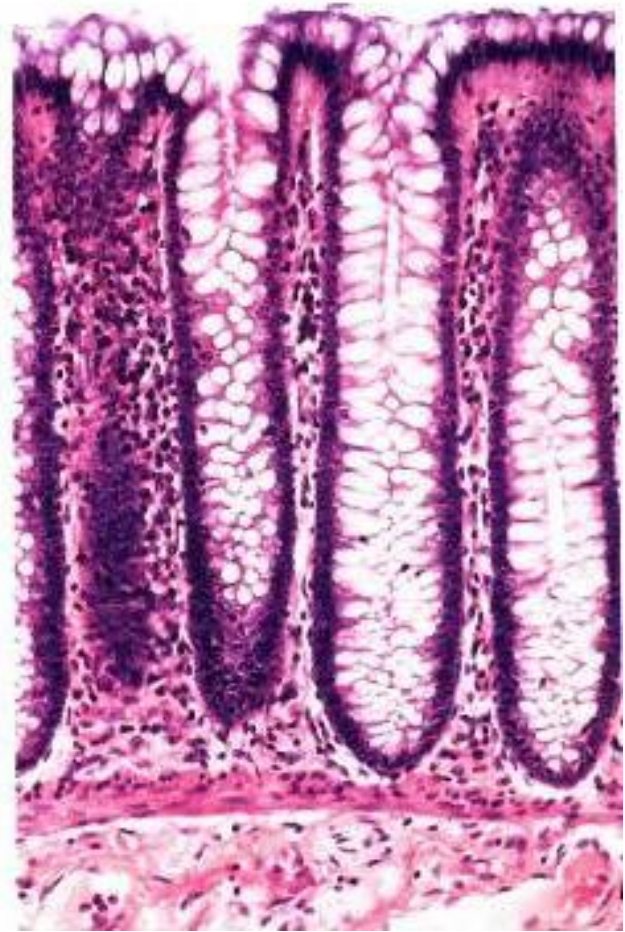
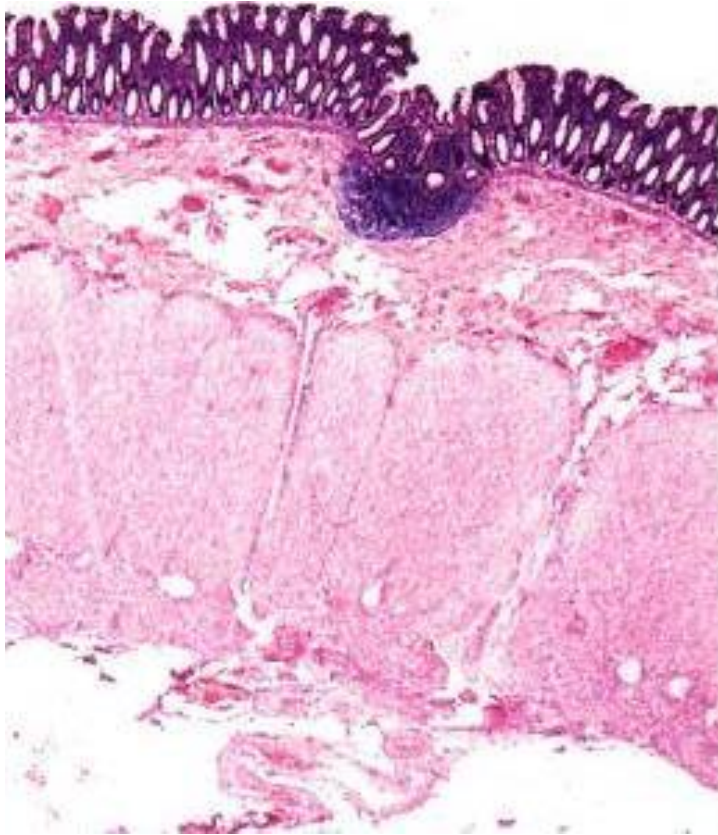
Entérocytes (+++)

Cellule
caliciforme

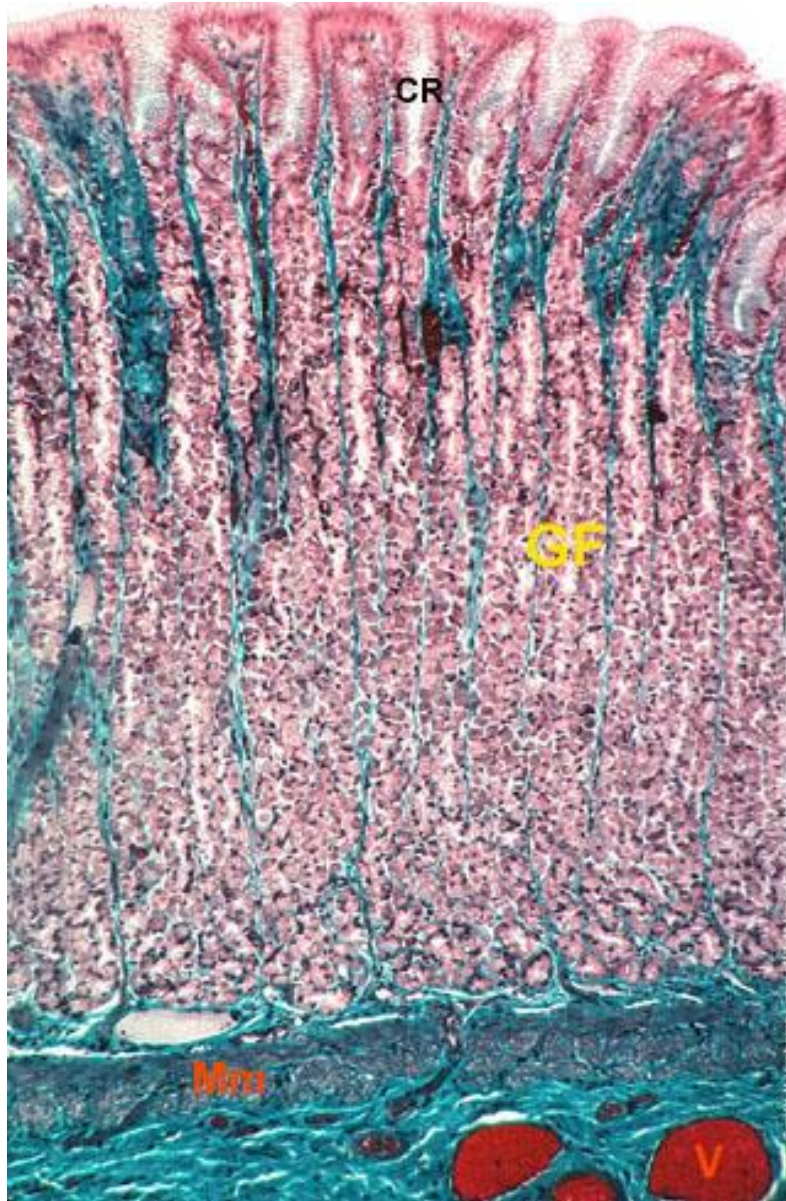


Intestin grêle

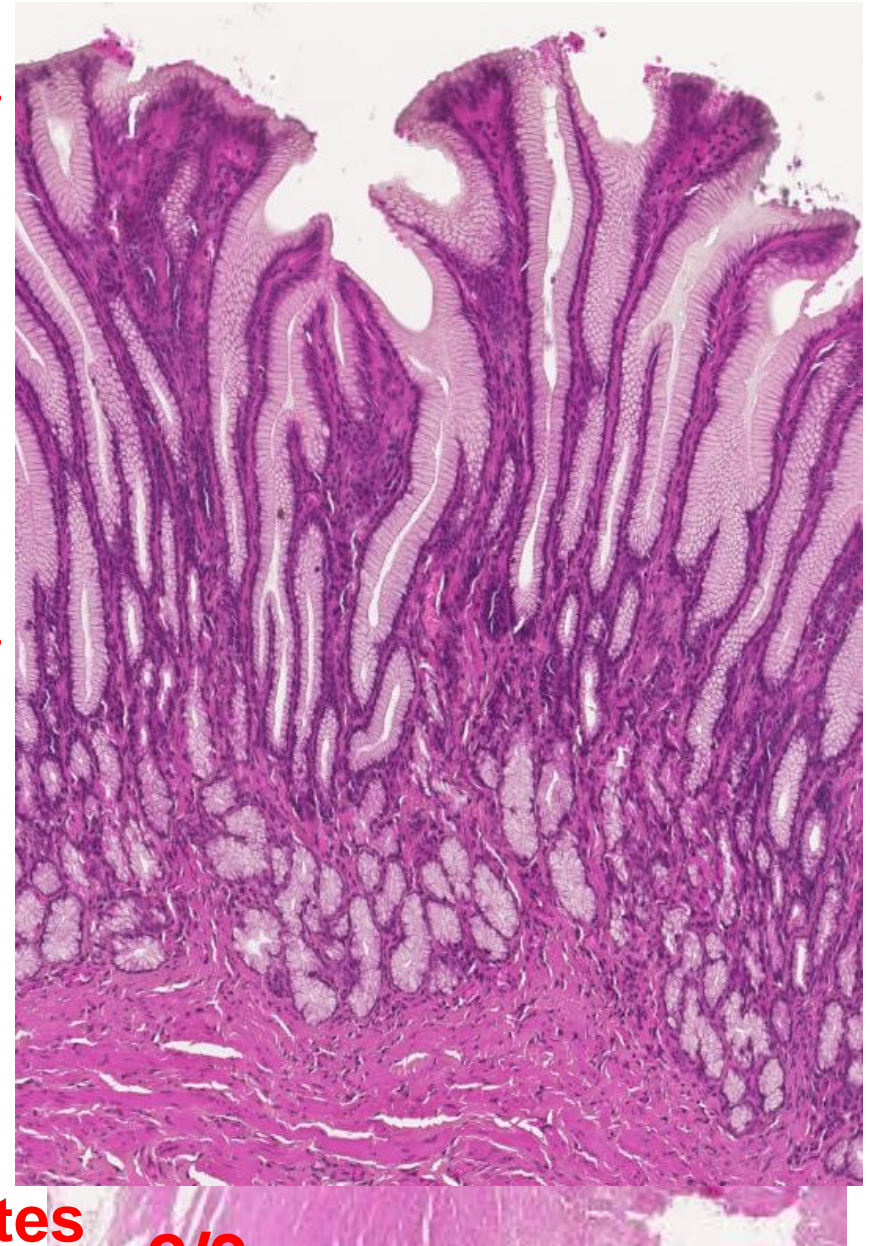




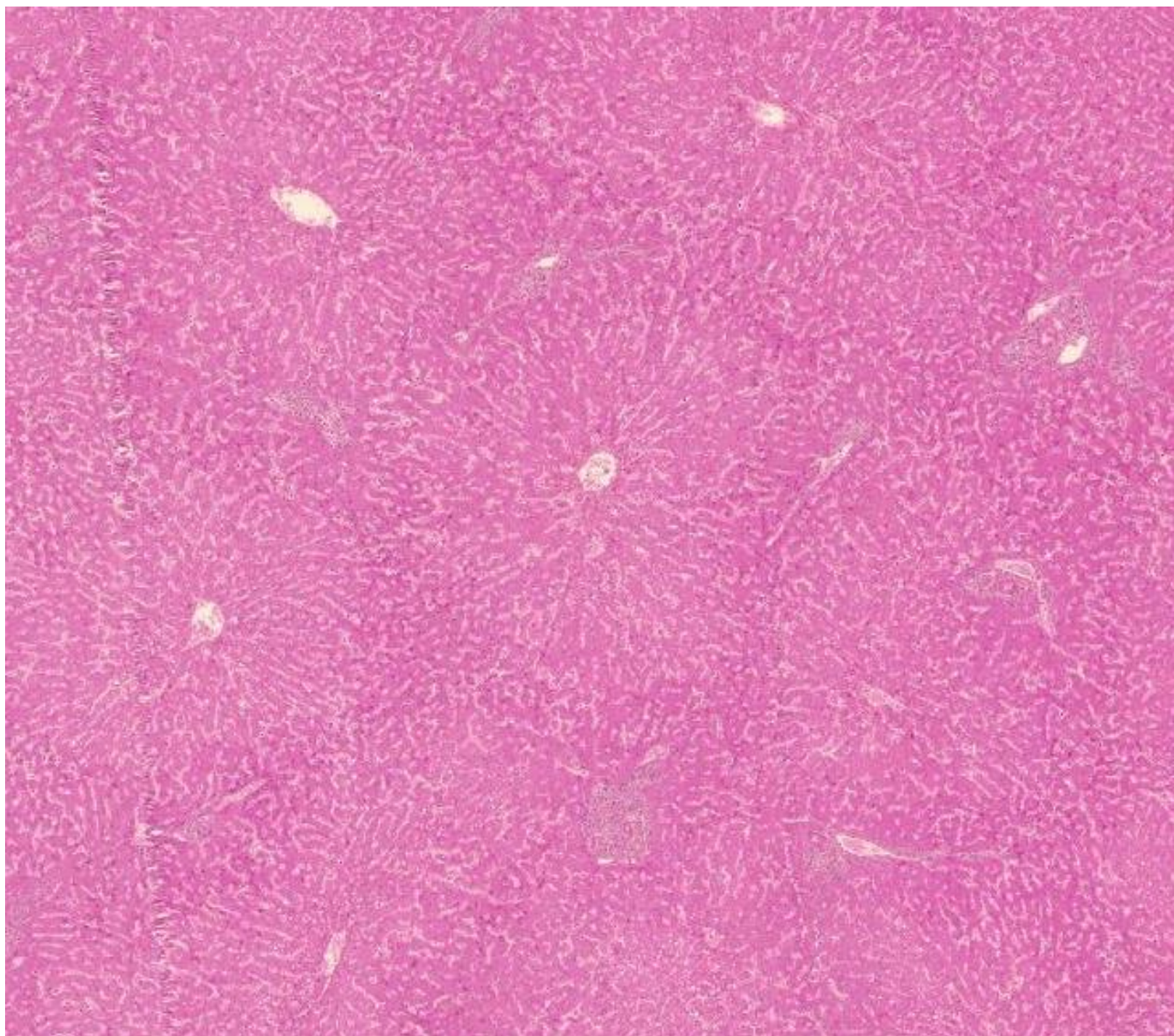
Estomac fundique

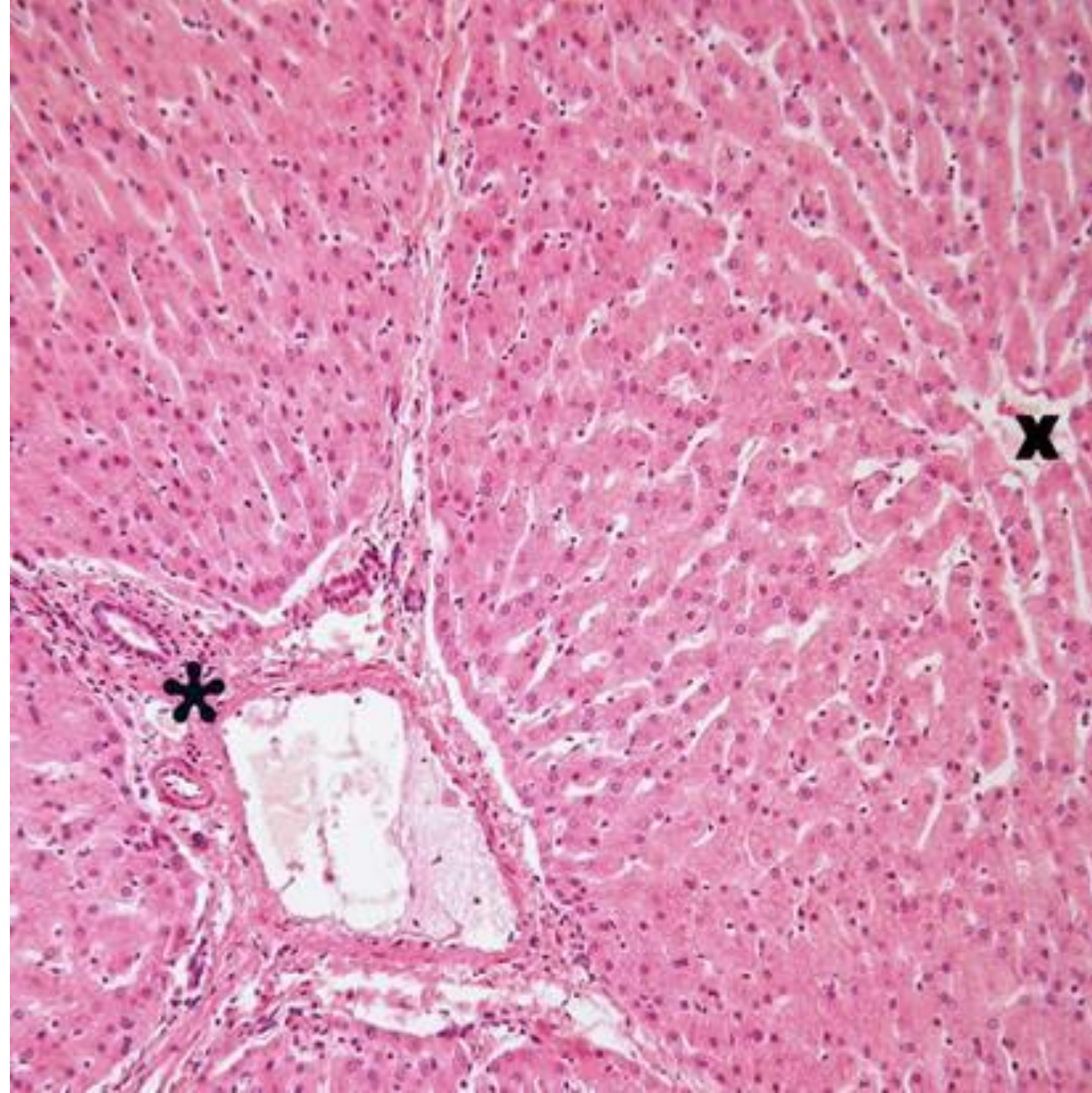


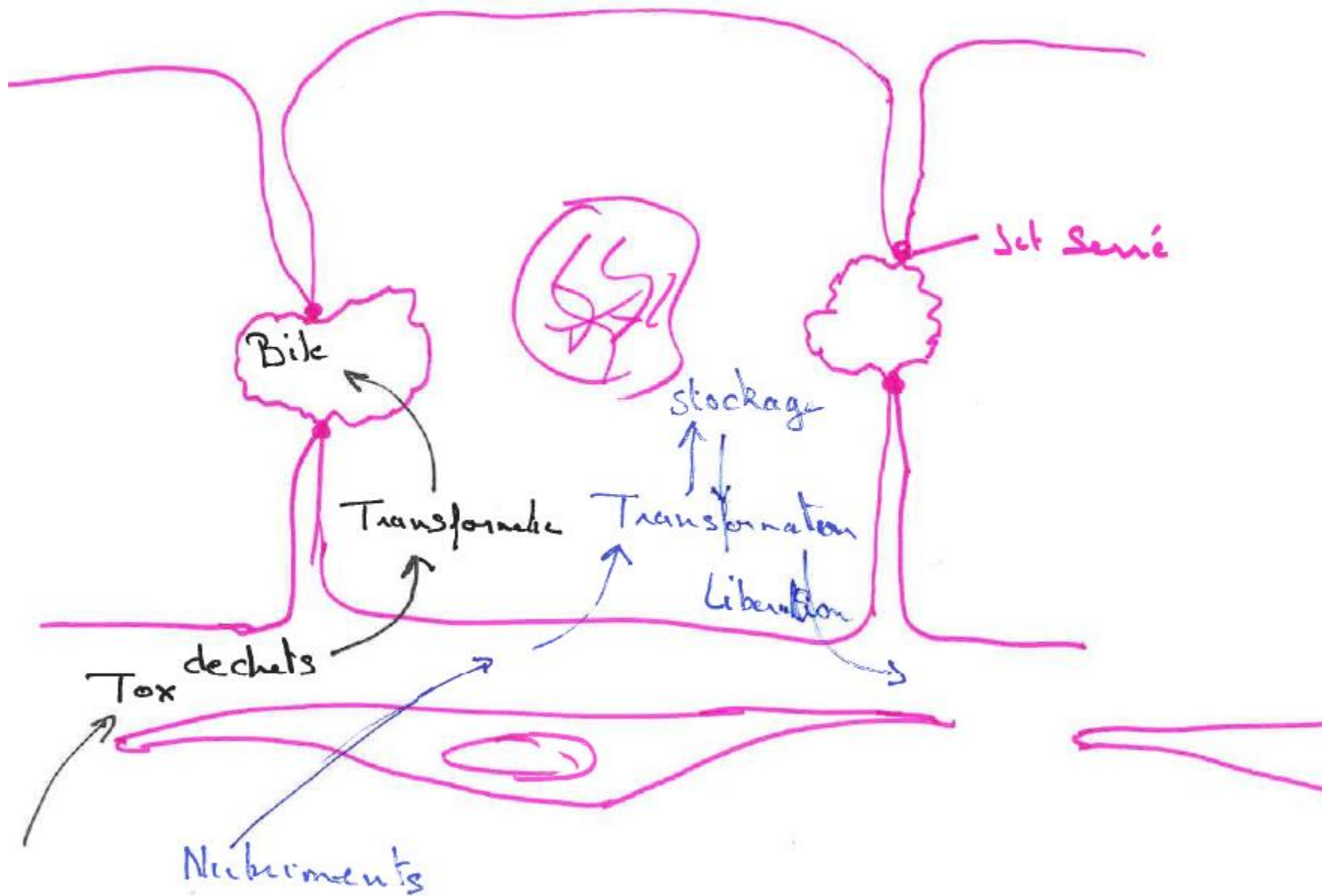
Estomac pylorique



1/3 cryptes 2/3







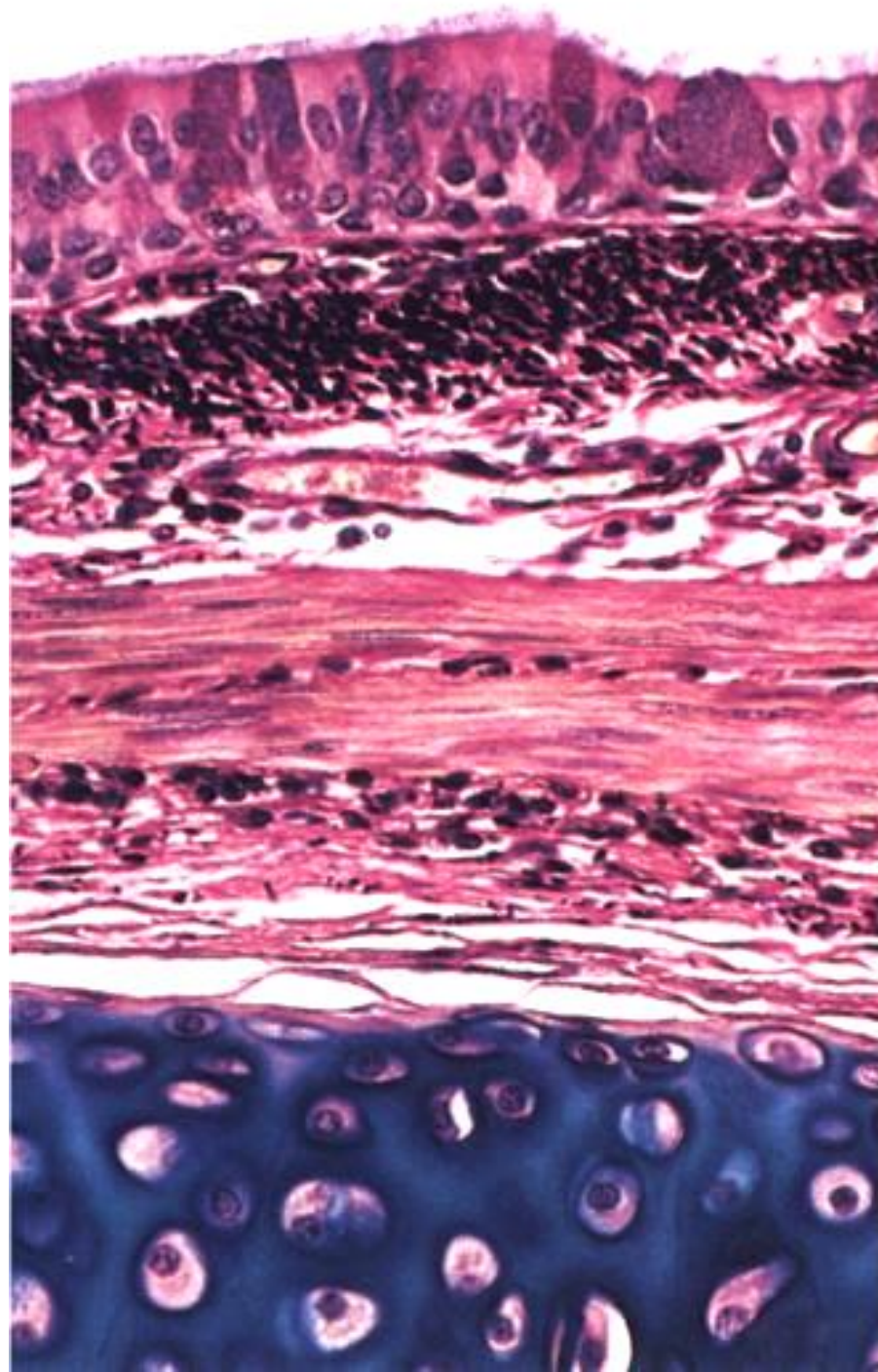
1

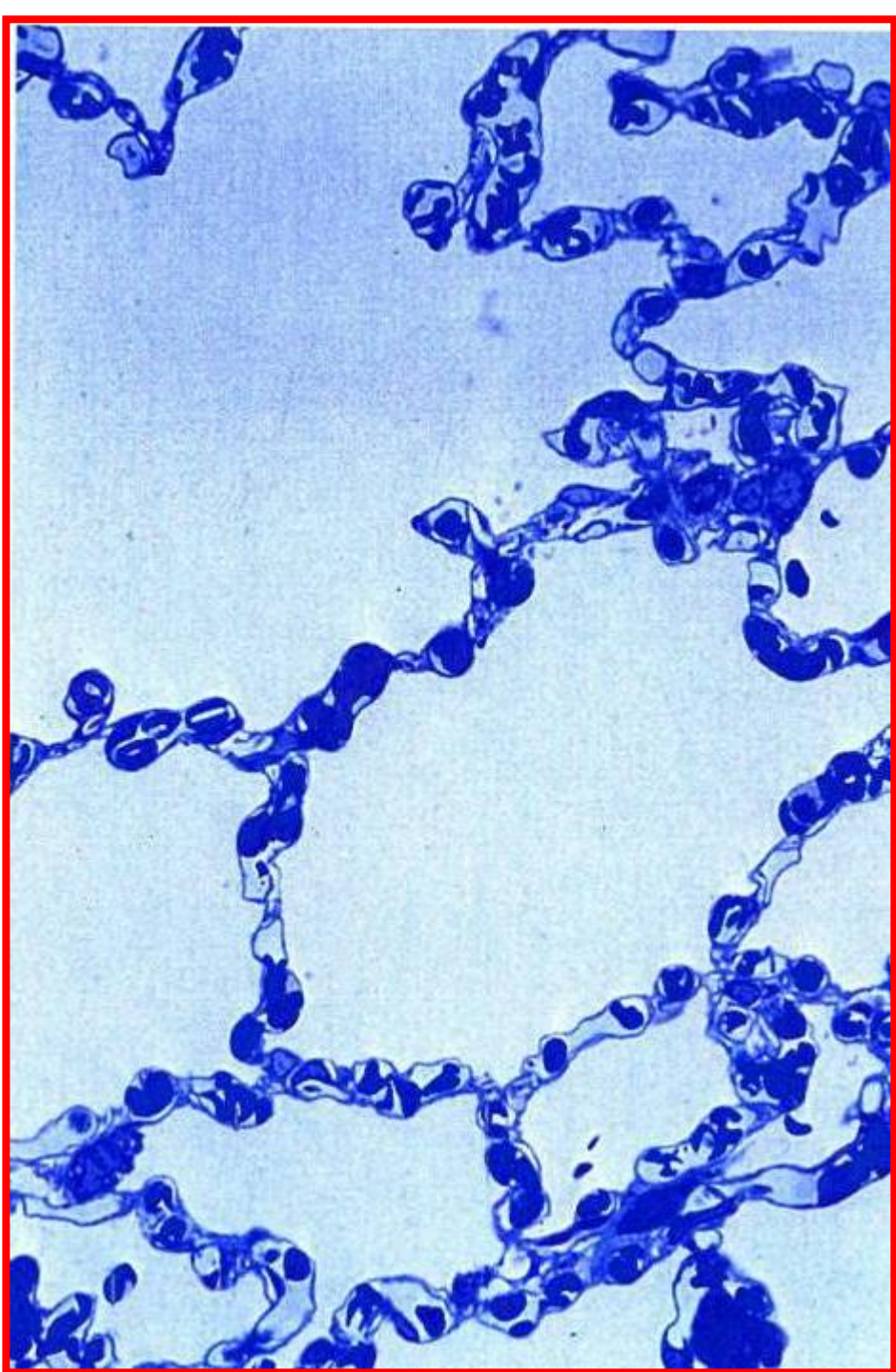
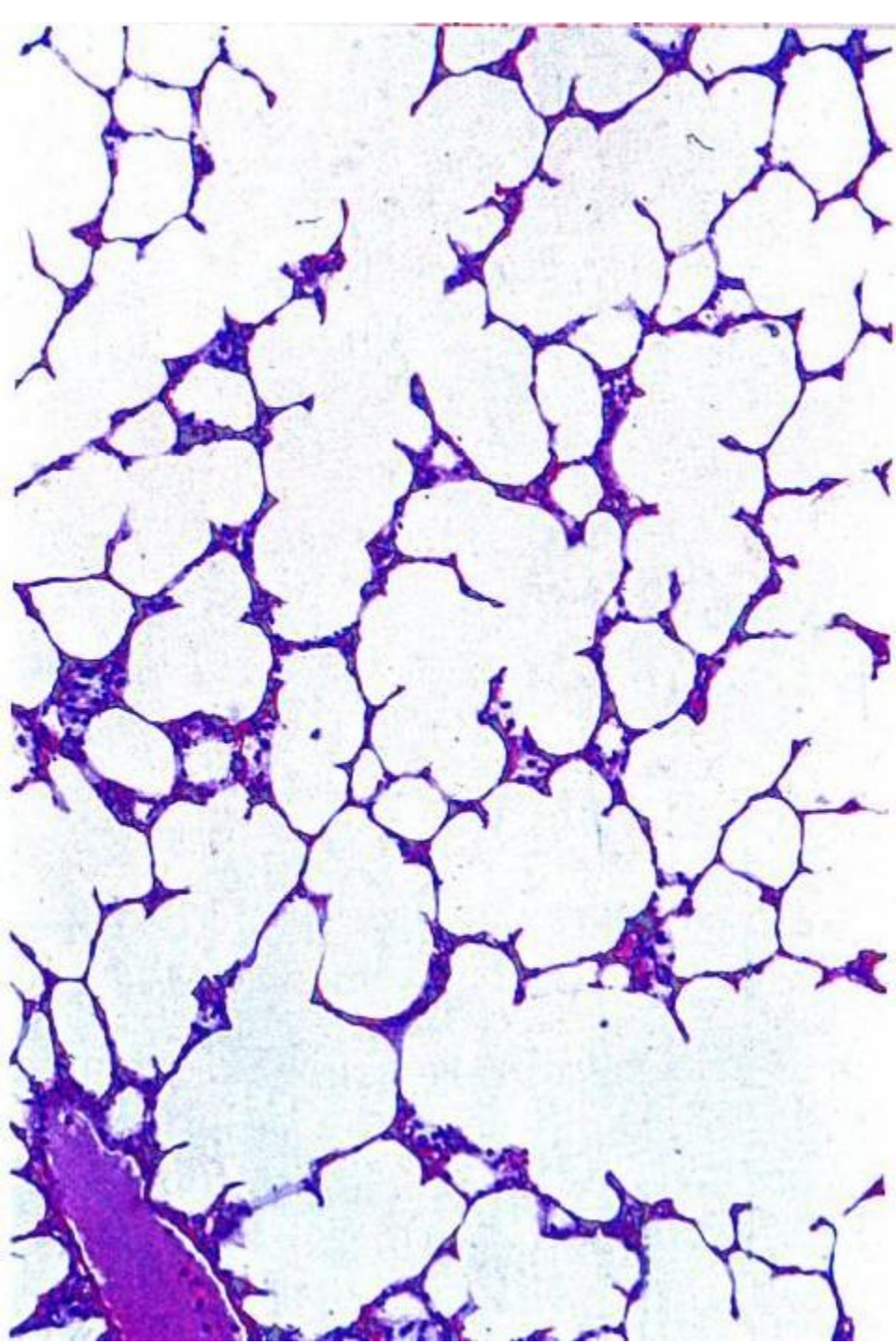
2

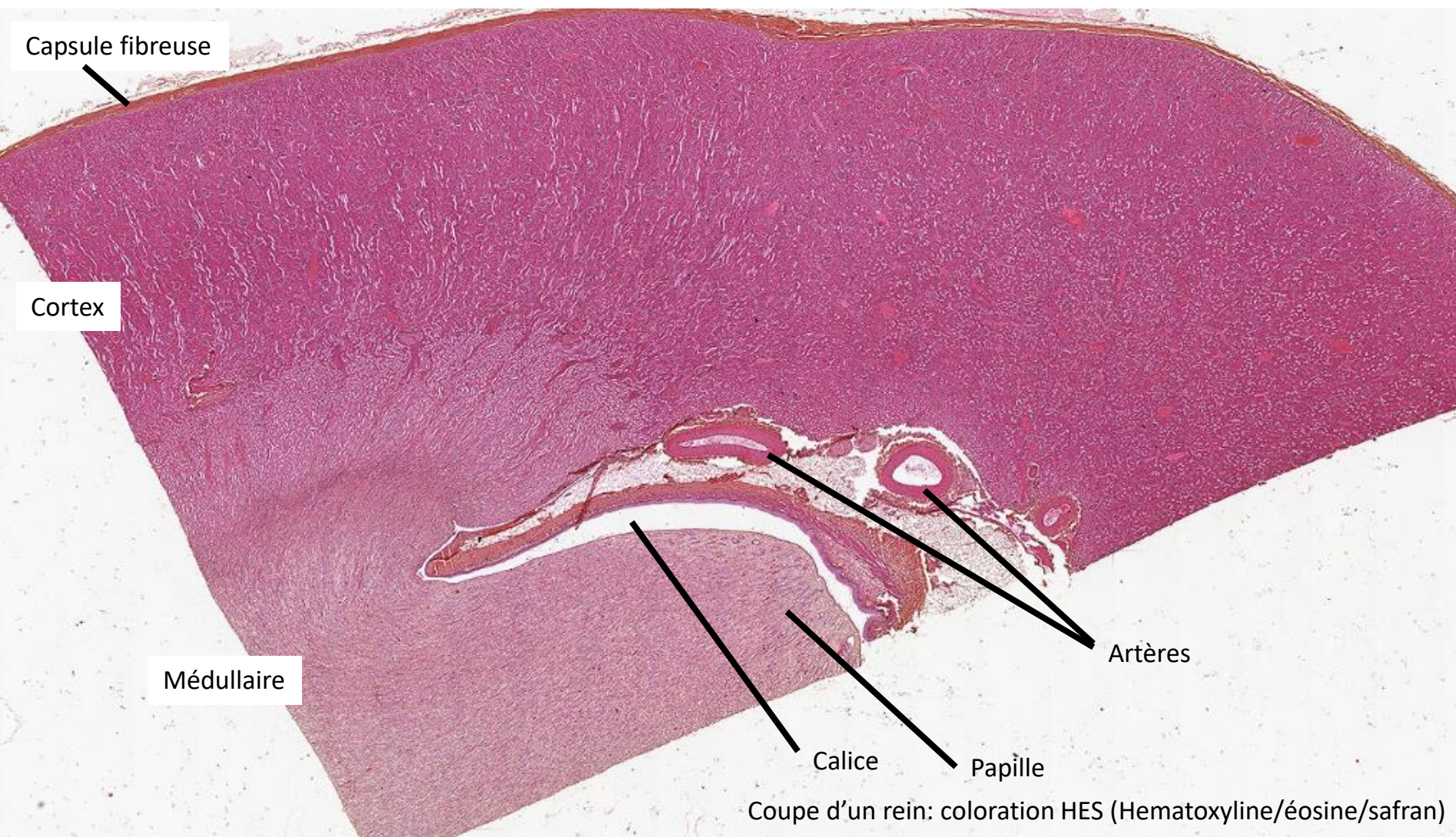
3

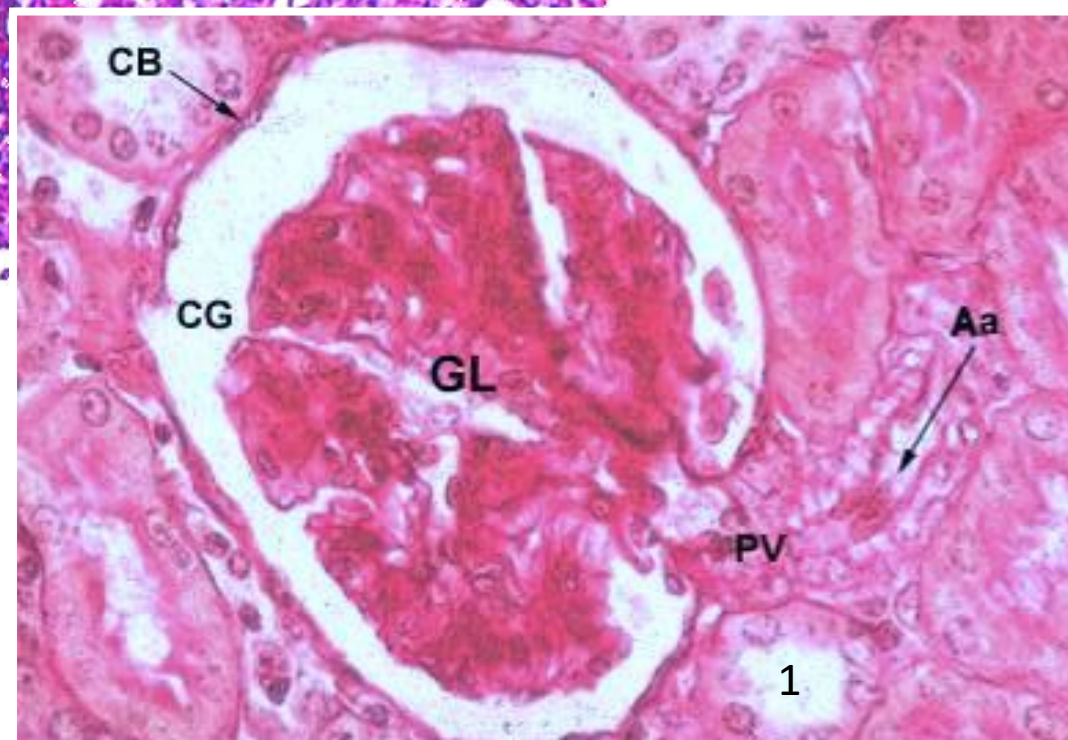
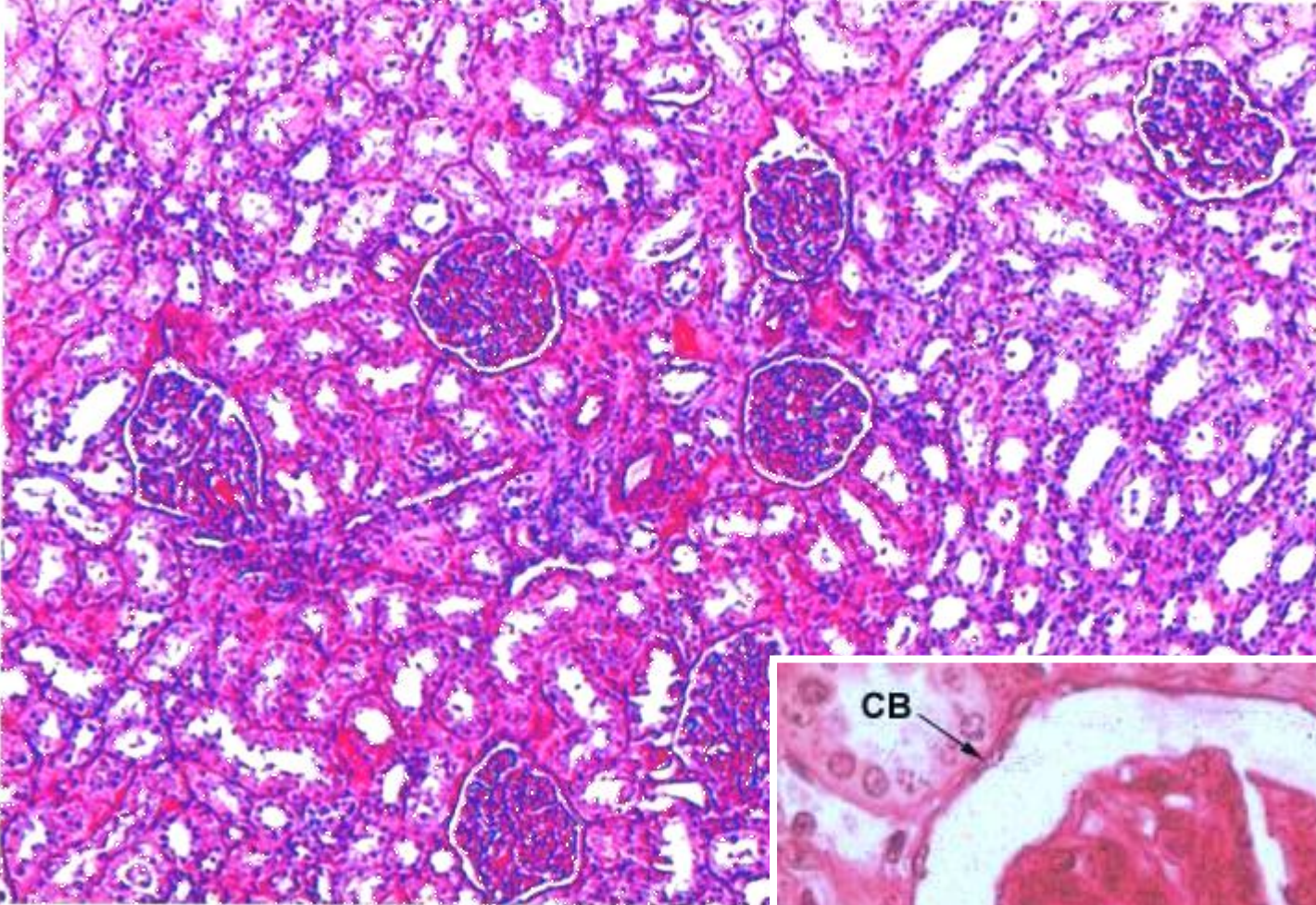
4

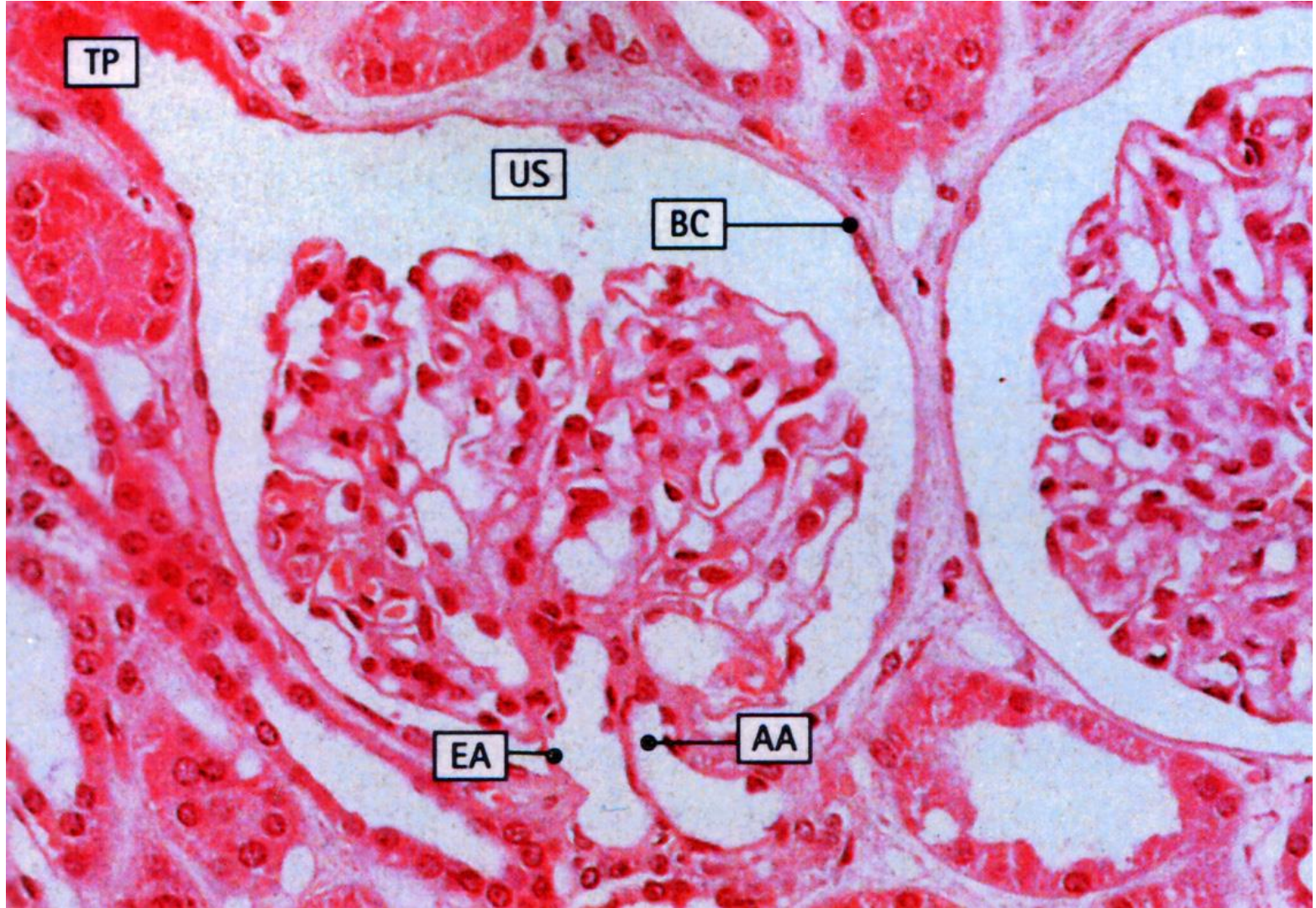
5

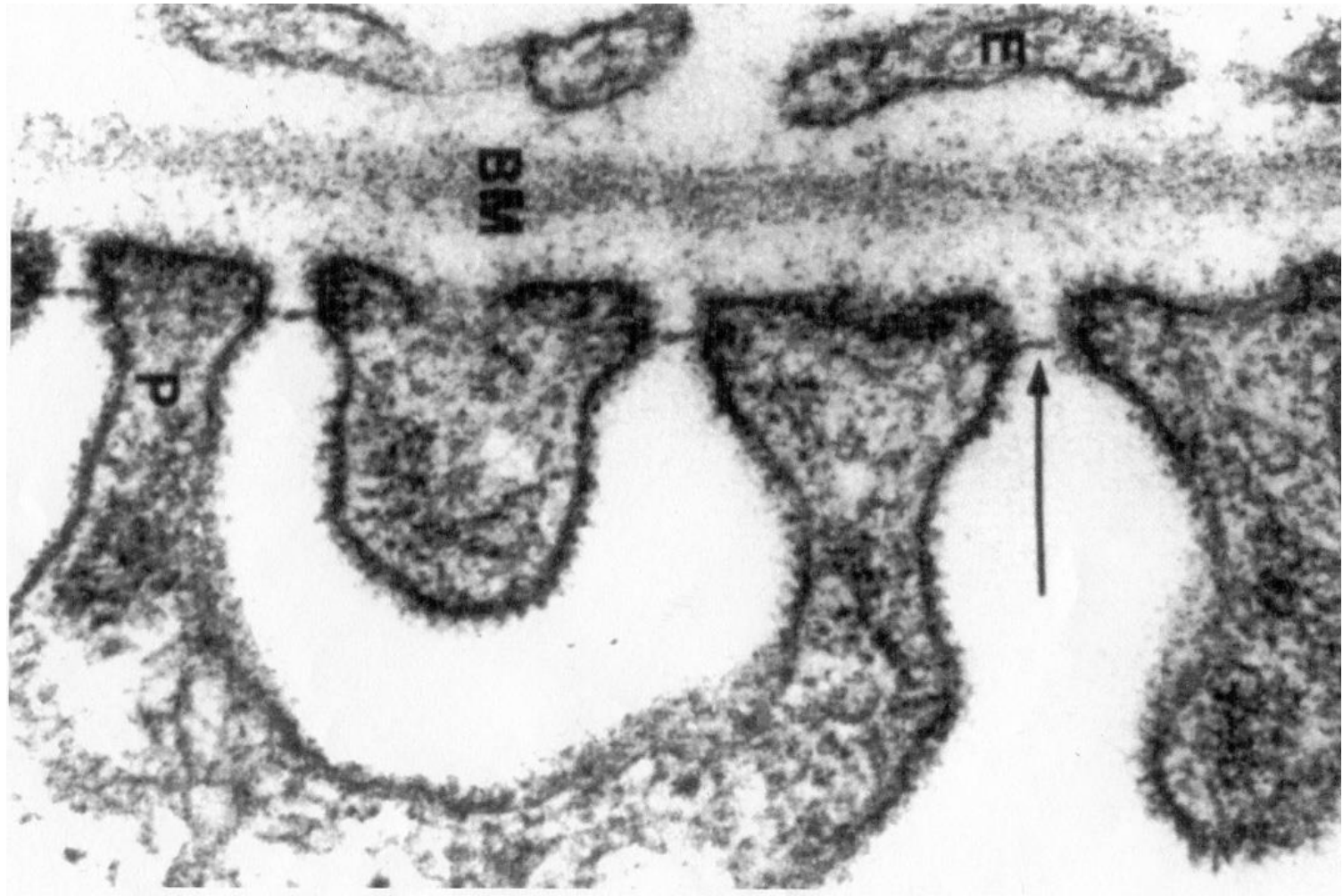












Tubule contourné proximal

Tubule contourné distal

Vers la veine rénale ↑

Glomérule

Cortex rénal

Depuis l'artère rénale ↑

Depuis d'autres néphrons ↓

Médullaire rénal

Anse de Henlé

Canal collecteur

↓ Vers l'uretère

