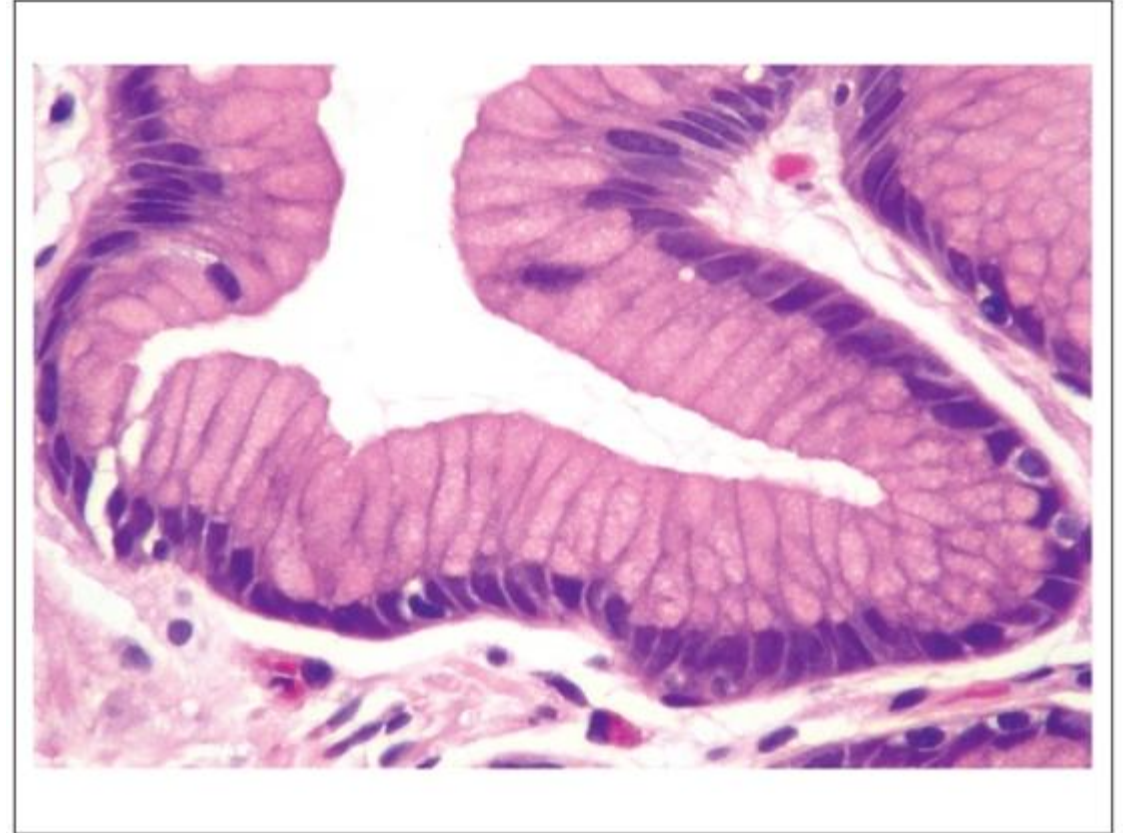


# HISTOLOGIE

## Epithélium gastrique

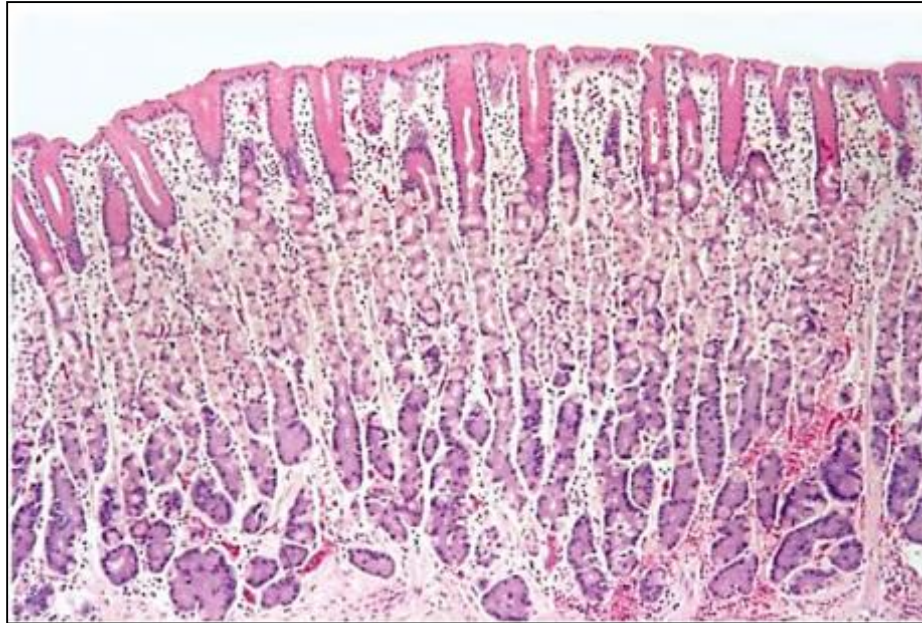
- Épithélium cylindrique simple à mucus fermé : rôle de protection contre l'acidité gastrique
- Musculeuse
- Séreuse



**Figure 23.5** Gastric surface epithelium with each cell having a mucous globule in the superficial cytoplasm. Intraepithelial lymphocytes are present. These are surrounded by a clear halo (formalin fixation artifact).

Copyright © 2007 by Lippincott Williams & Wilkins, a Wolters Kluwer business.  
*Histology for Pathologists*, Third Edition by Stacey E. Mills.

# HISTOLOGIE: LES GLANDES GASTRIQUES



Muqueuse fundique

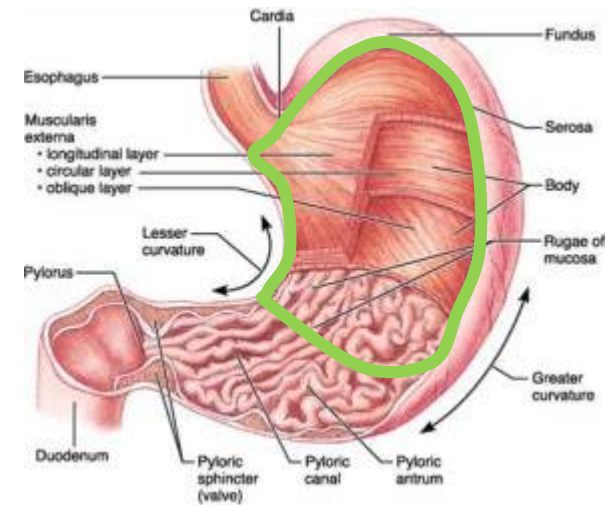
Cellules pariétales ( $H^+$ , facteur intrinsèque)

Cellules principales (pepsine)

Cellules à histamine

Cellules D (somatostatine)

Estomac proximal  
(fundus + corps)

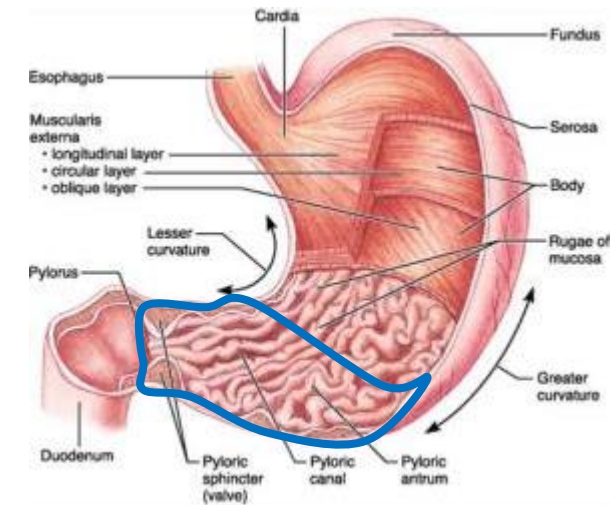
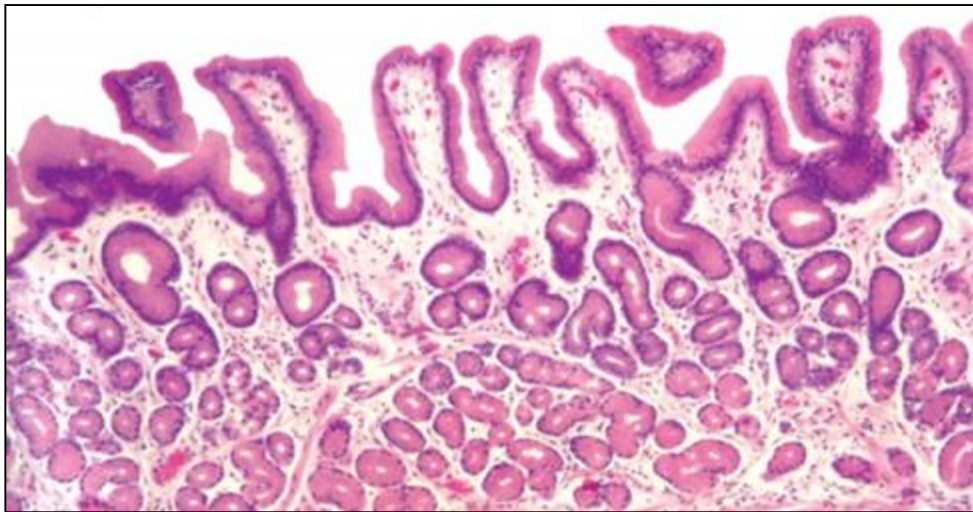


# HISTOLOGIE: LES GLANDES GASTRIQUES

Muqueuse antrale

Cellules G (gastrine)

Cellules D (somatostatine)



Estomac distal  
(antre)

# BARRIÈRE MUQUEUSE GASTRIQUE

- Revêtement cellulaire
- Revêtement de mucus
- Sécrétion d'ions bicarbonates

