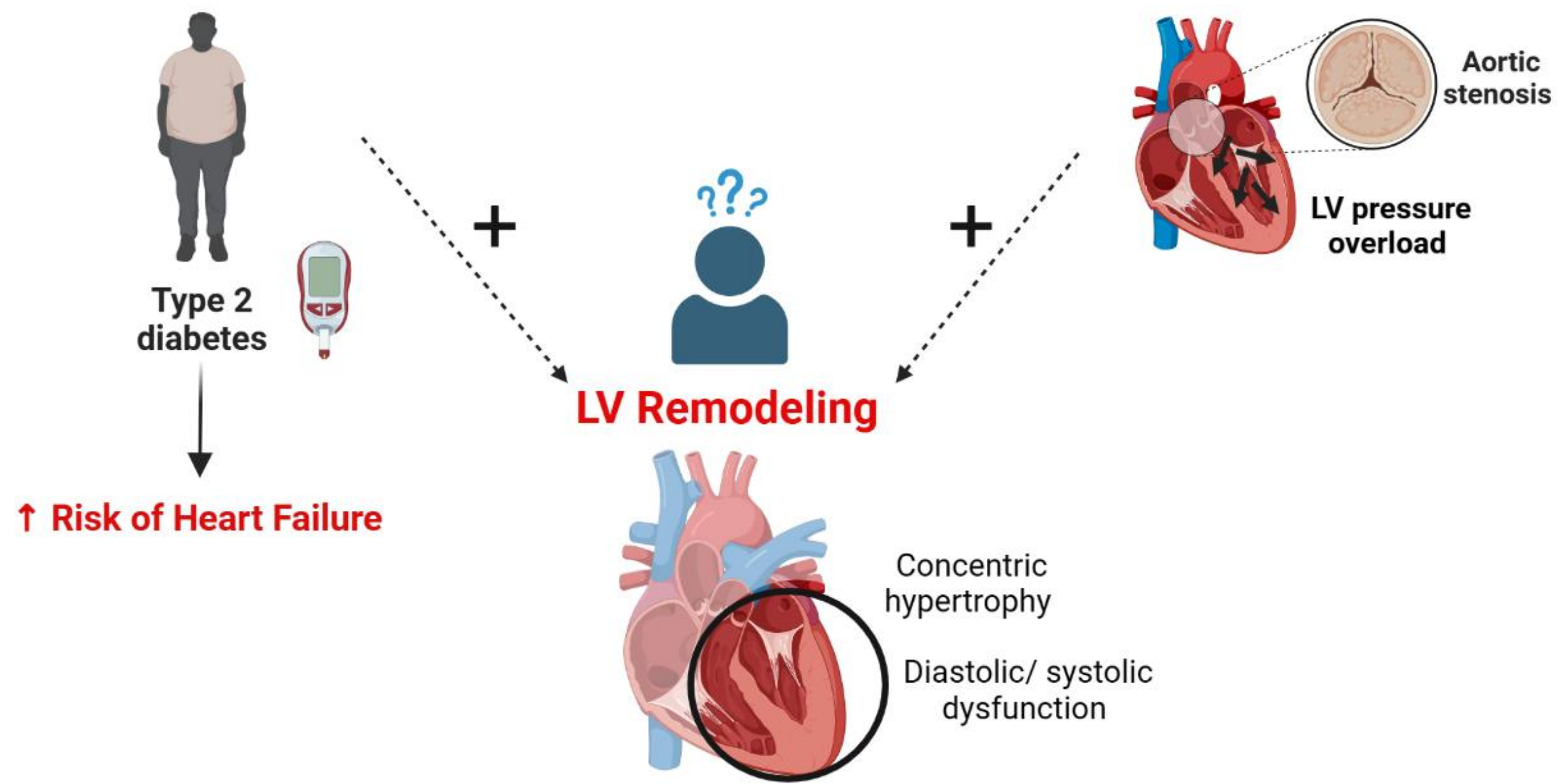


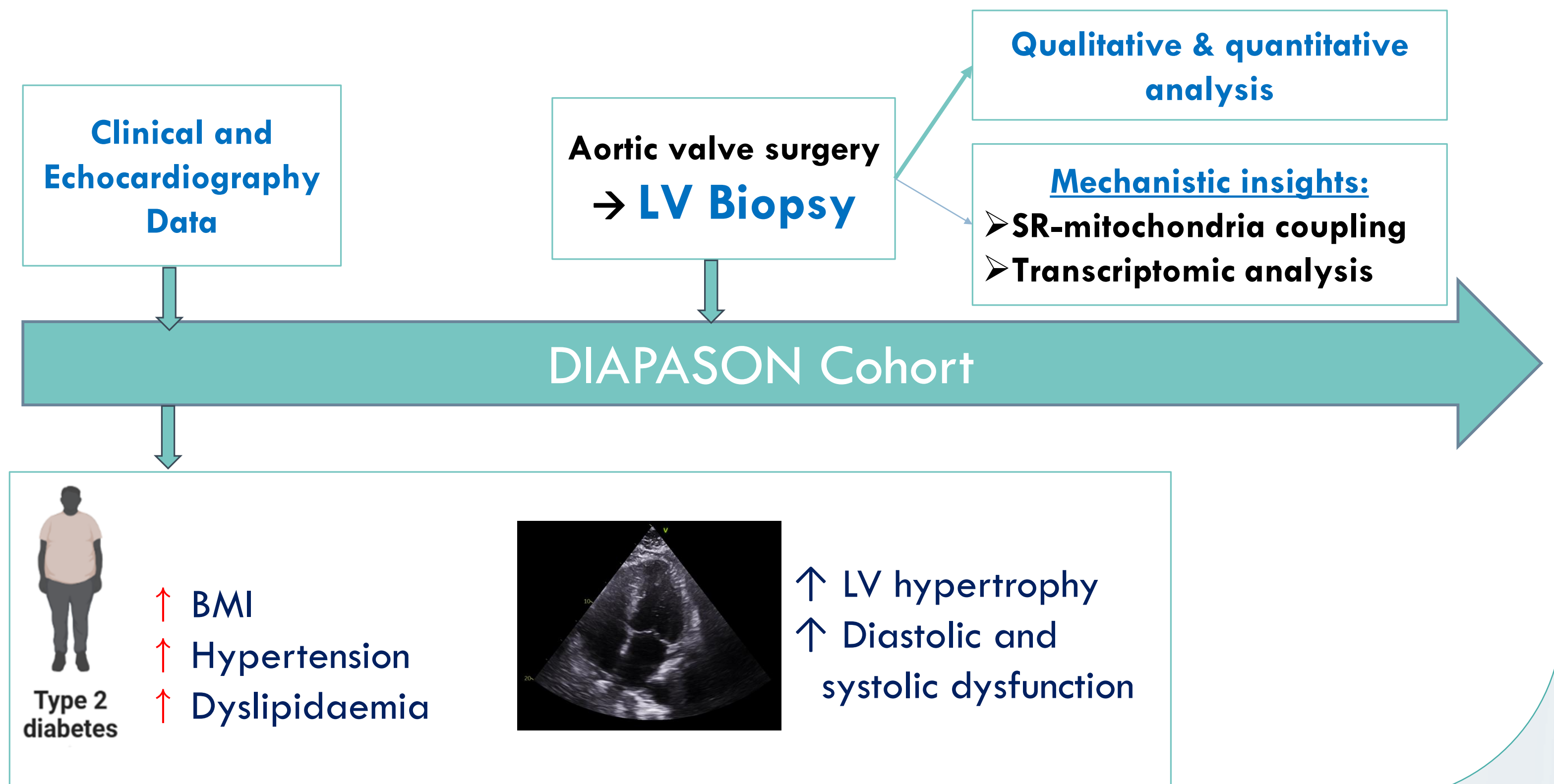
Maelle CHERPAZ^{*1,2}, Emmanuelle MEUGNIER^{*2}, Gaultier SEILLIER^{*1}, Camille AMAZ², Romain PIERRARD³, Lara CHALABREYSSE¹, Chloe MAY², Stephanie CHANON², Camille BRUN¹, Nathan MEWTON², Cyrille BERGEROT^{1,2}, Melanie PAILLARD¹ & Helene THIBAUT^{1,2}

¹INSERM U1060 CarMeN Bron-France, ²Louis Pradel Hospital Bron-France, ³CHU Saint-Etienne

Introduction and experimental design



Objective: To identify the mechanisms associated with T2D-induced LV dysfunction and remodelling.

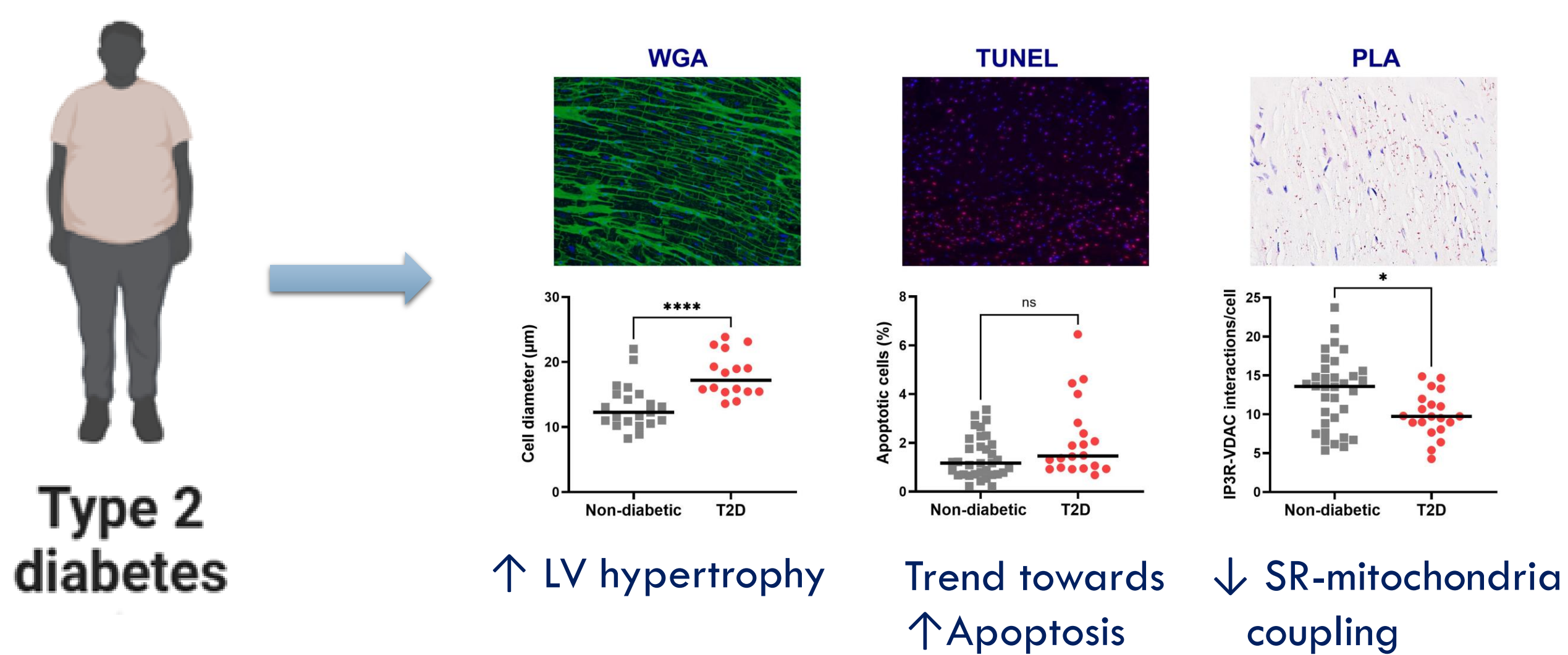


Inclusion criteria:

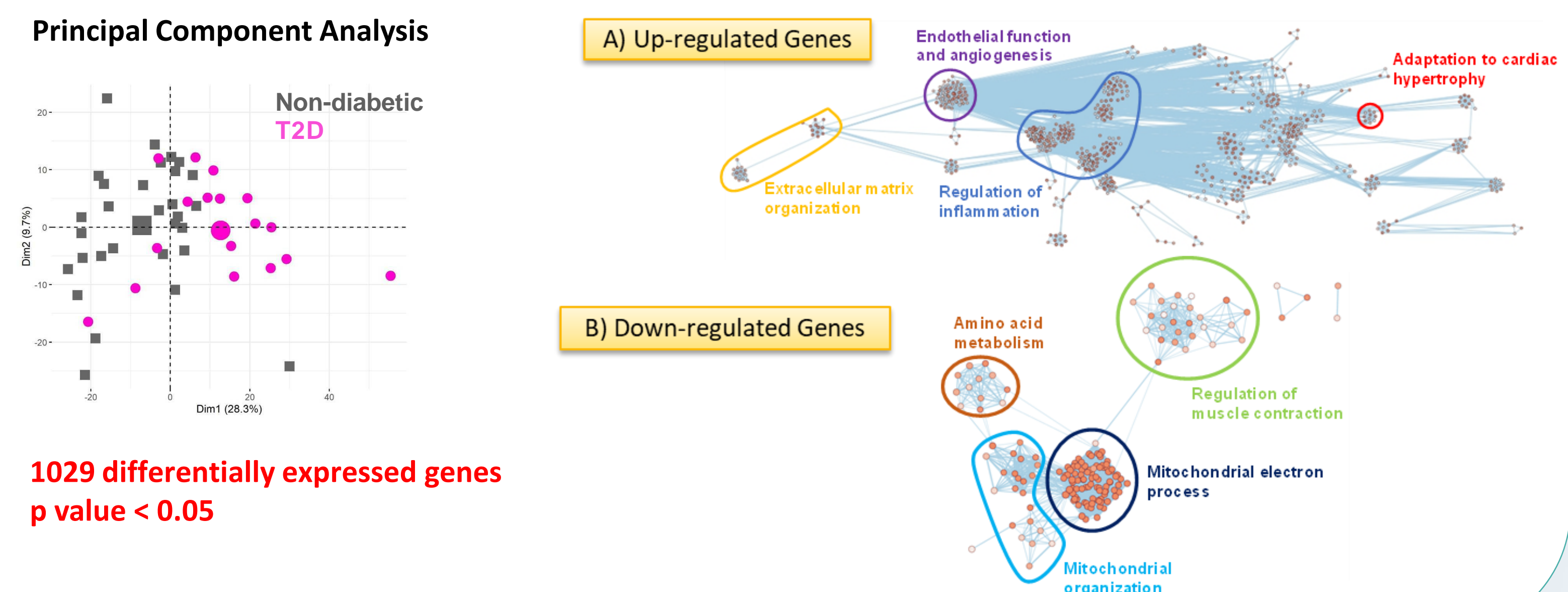
- Men and women > 18 years old
- 34 T2D and 50 Non-diabetics
- Isolated severe aortic stenosis < 1cm²
- LVEF > 50% without overt heart disease
- Aortic valve surgery

Results

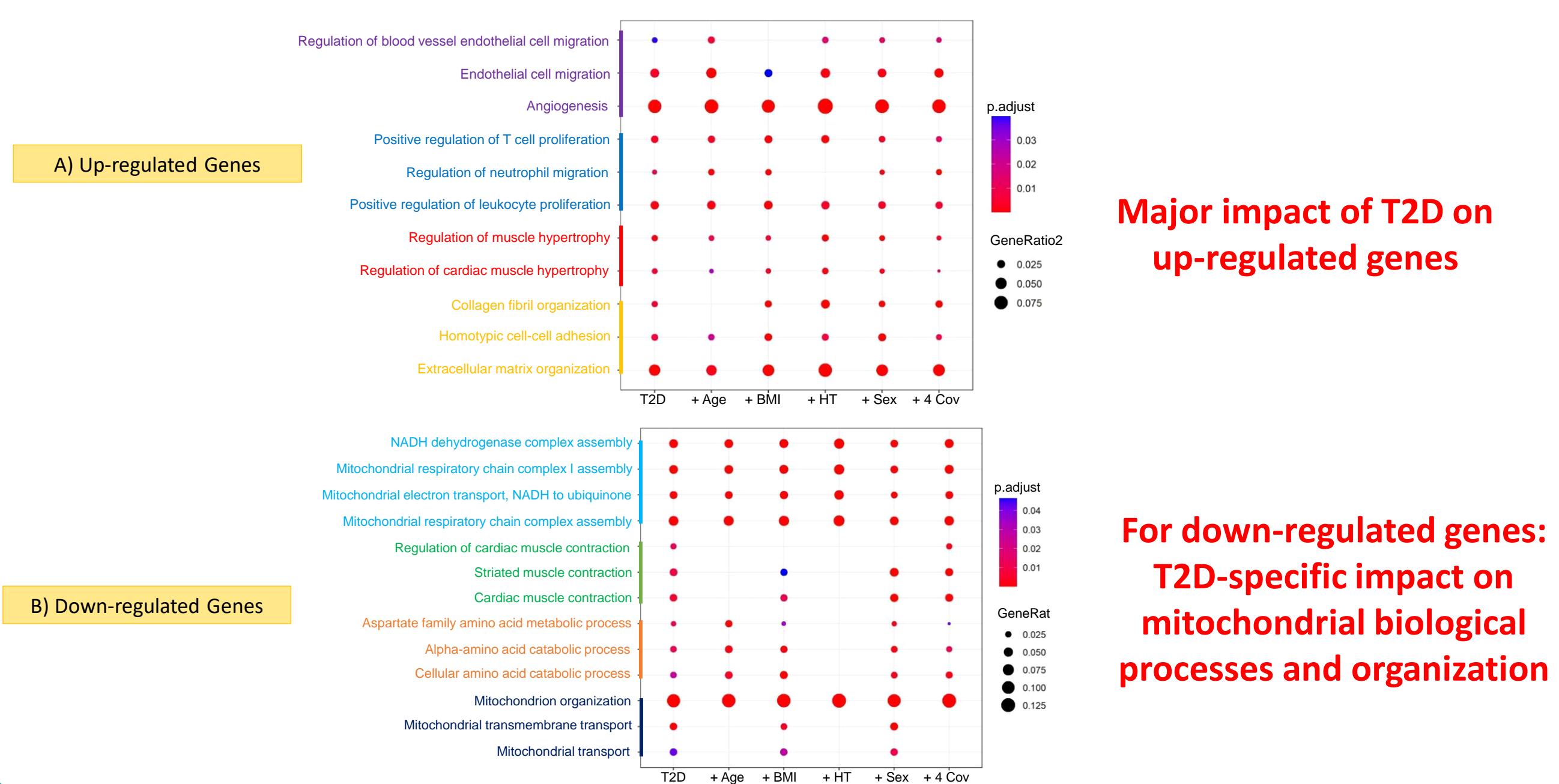
1) Myocardial histology



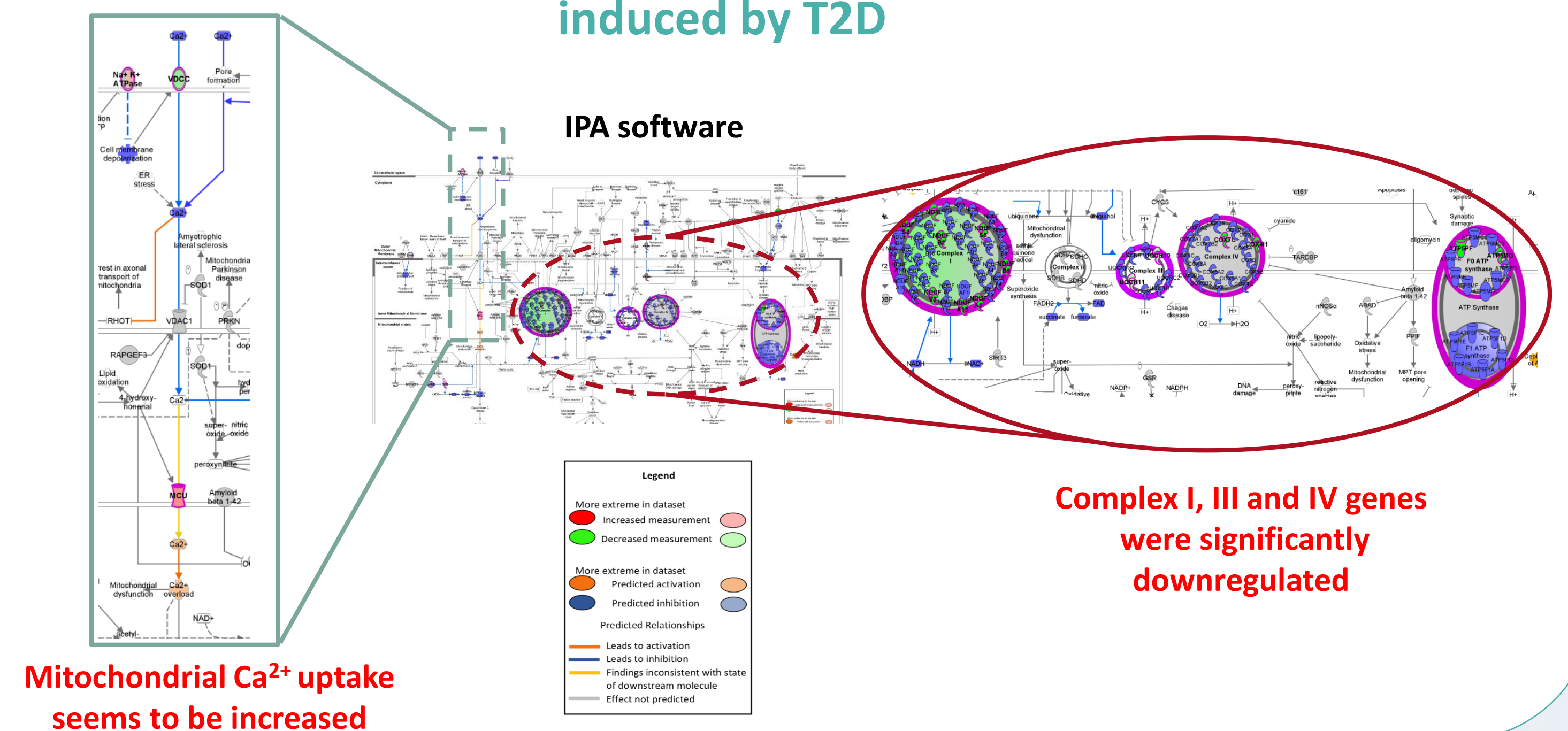
2) Transcriptomic analysis



3) Effect of T2D comorbidities



4) Mitochondrial dysfunction as main canonical signaling pathways induced by T2D



Conclusion

5) Effect of T2D on mitochondrial Ca²⁺ uniporter genes

