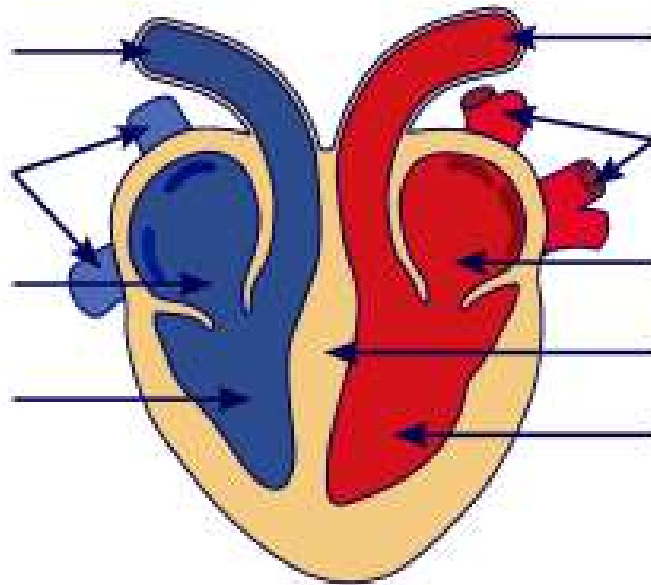
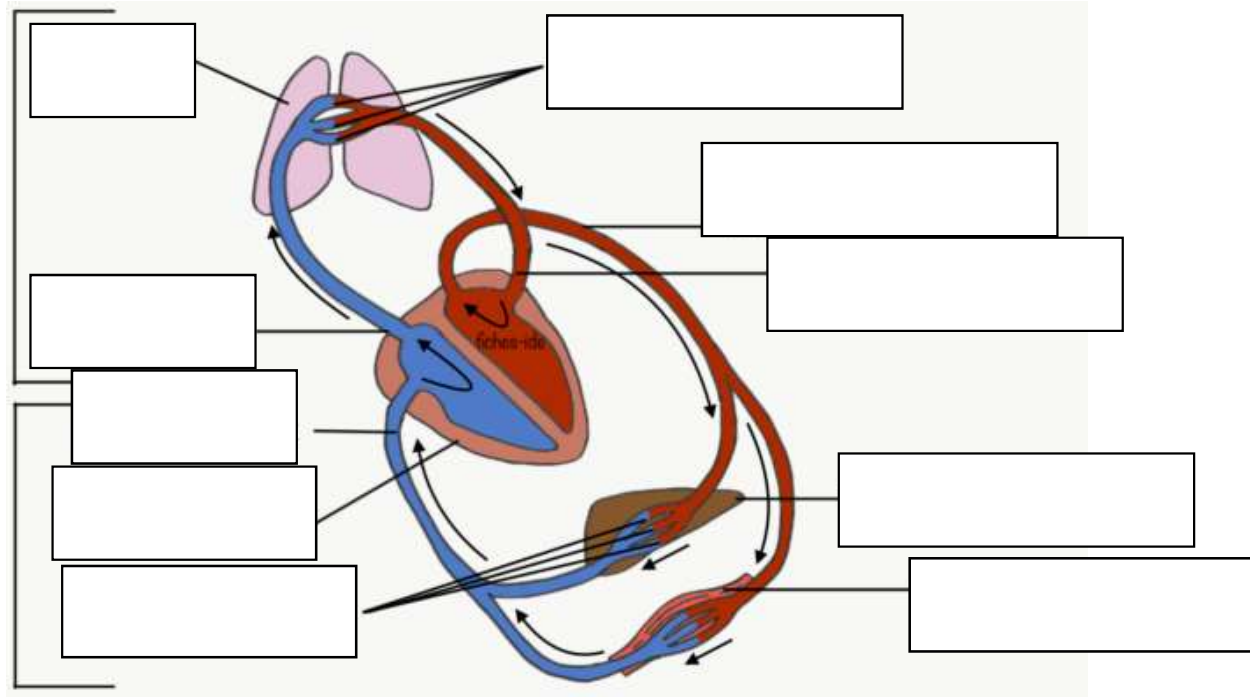


## Coupe frontale du cœur



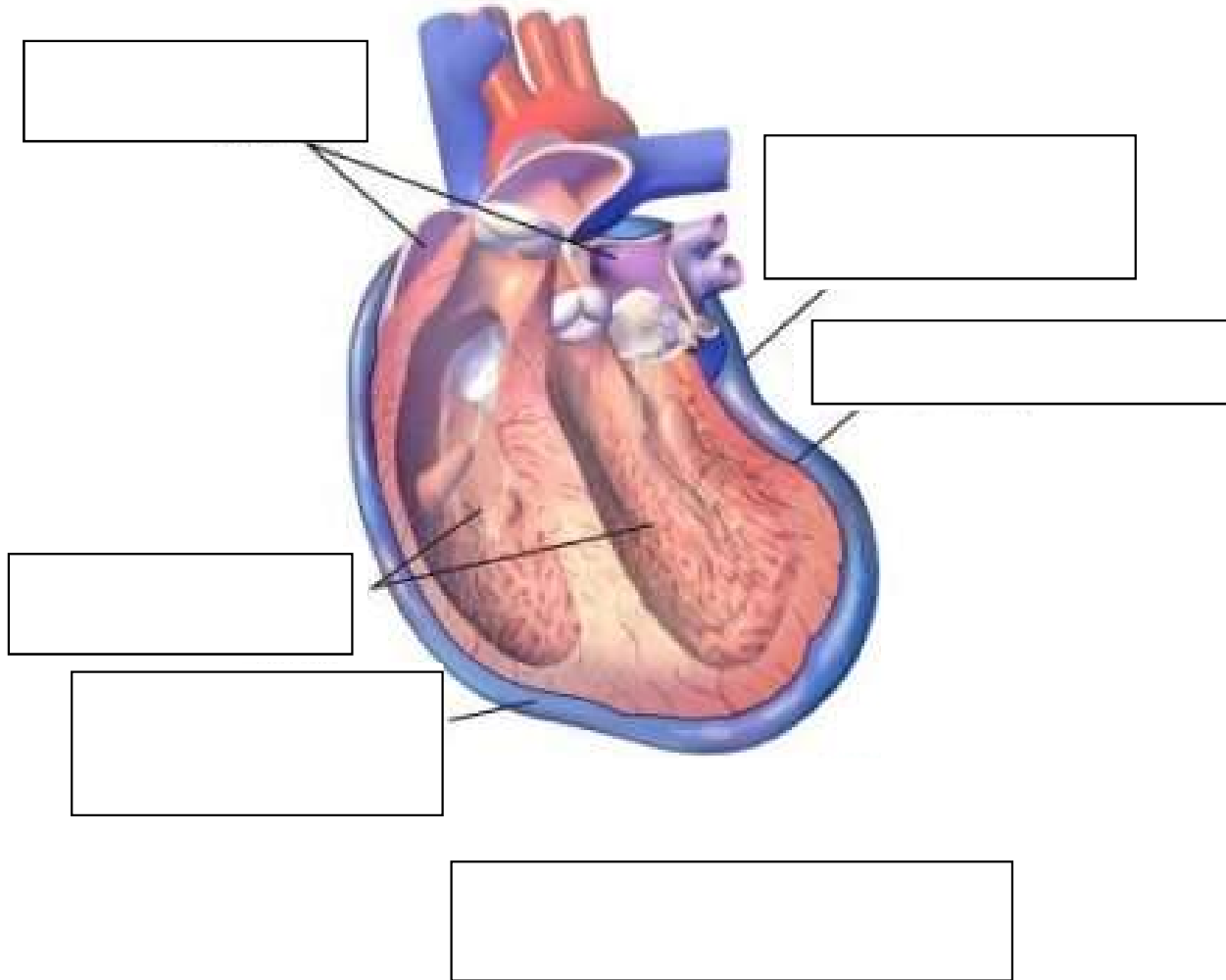
# Schéma général de la circulation sanguine

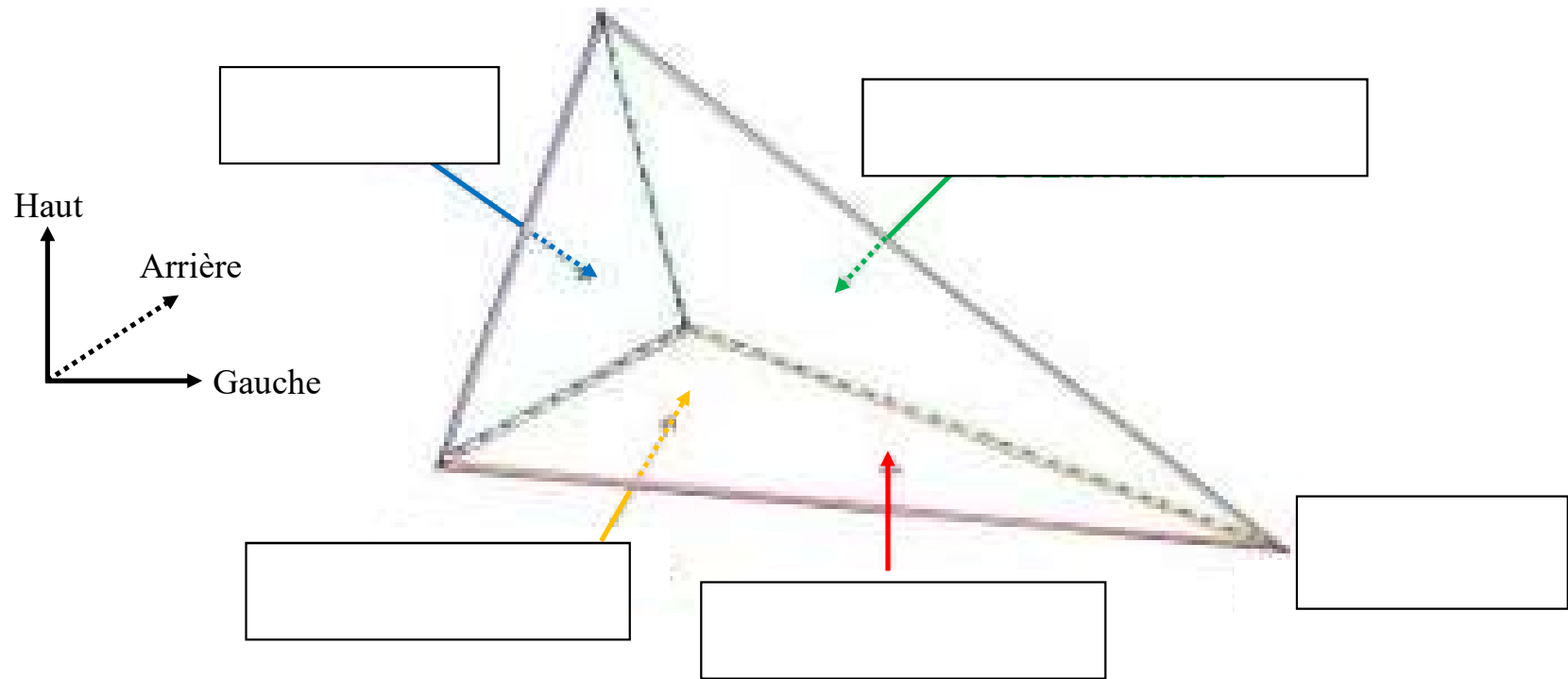


.....  
OU  
.....

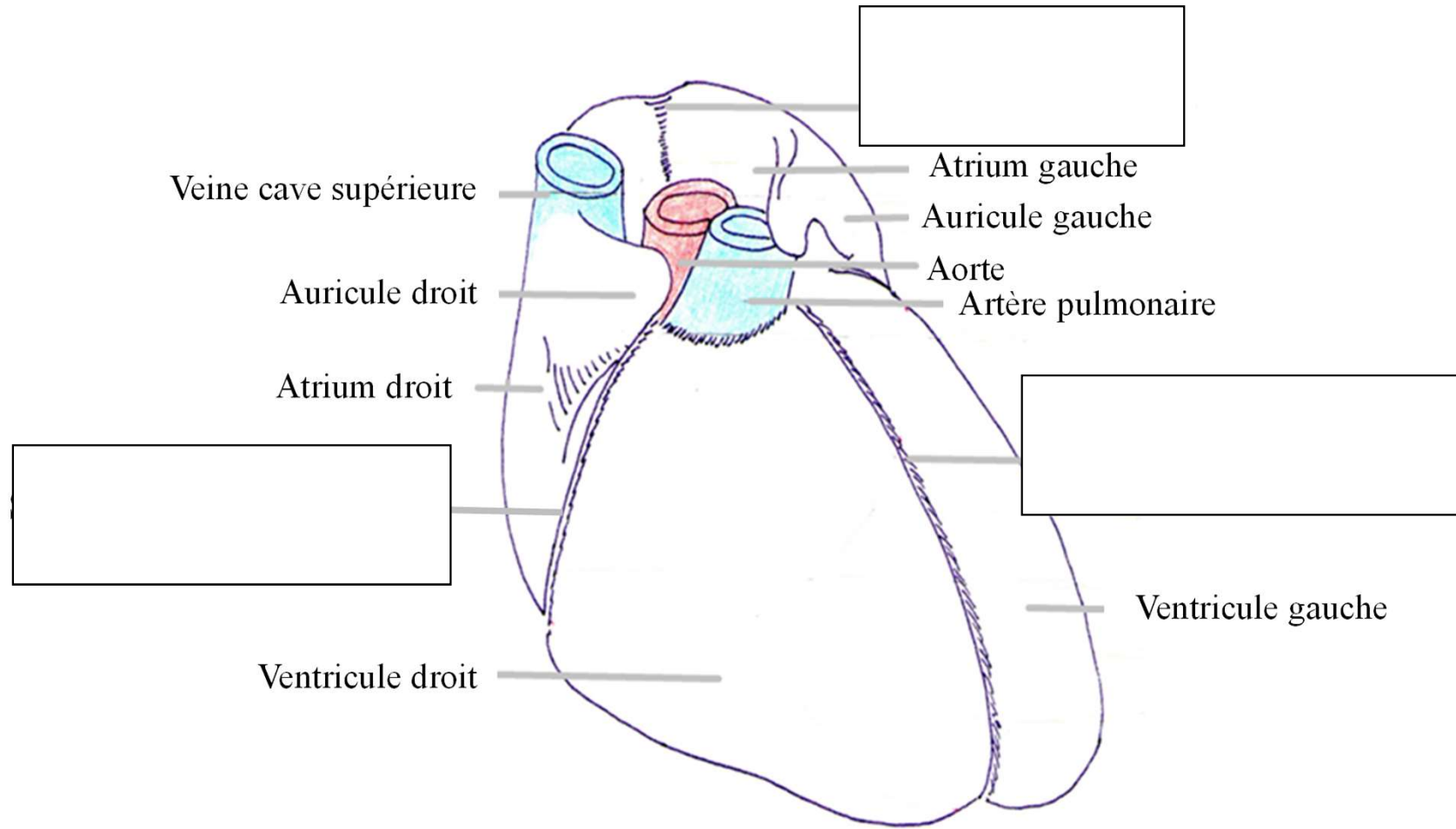
.....  
OU  
.....

## Coupe frontale du sac péricardique

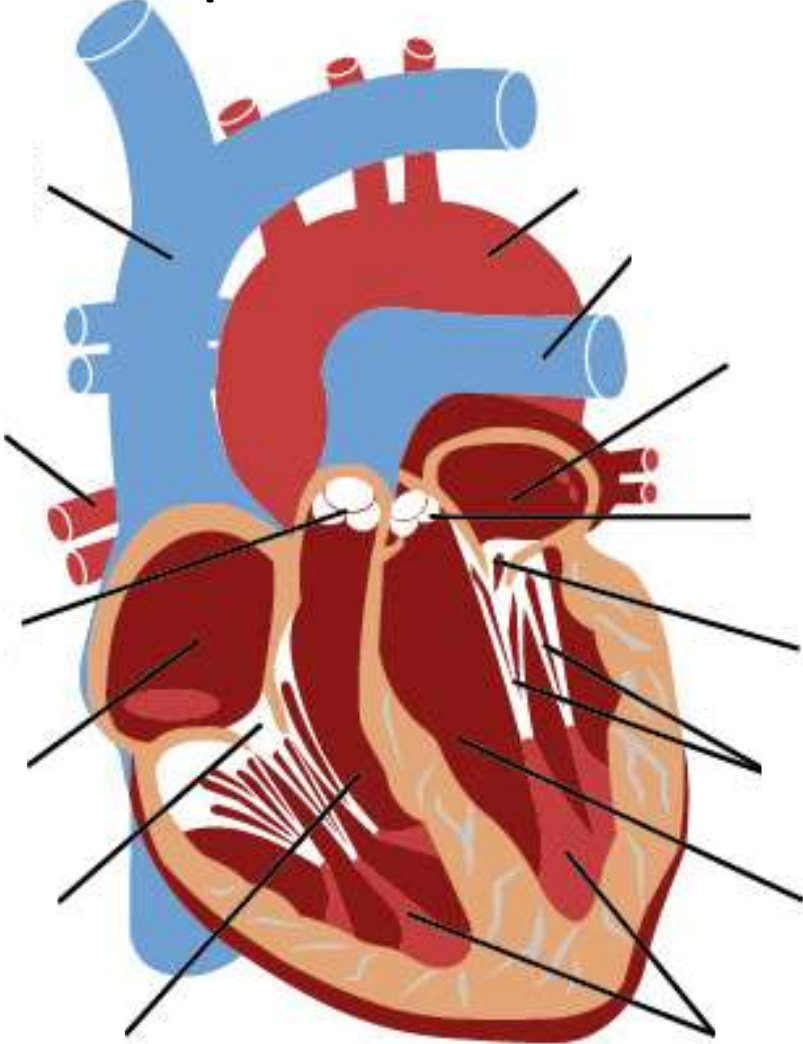




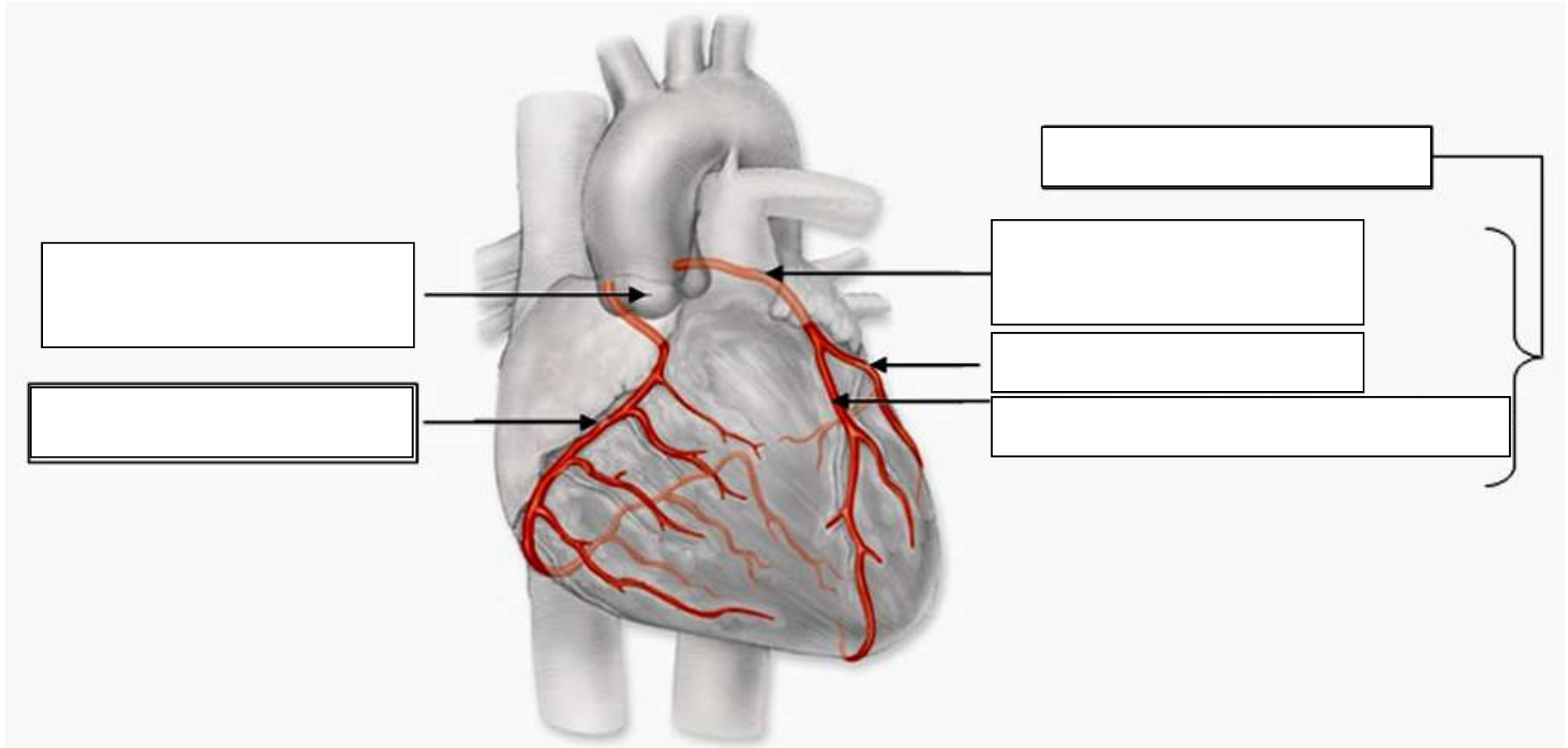
## Les sillons du cœur



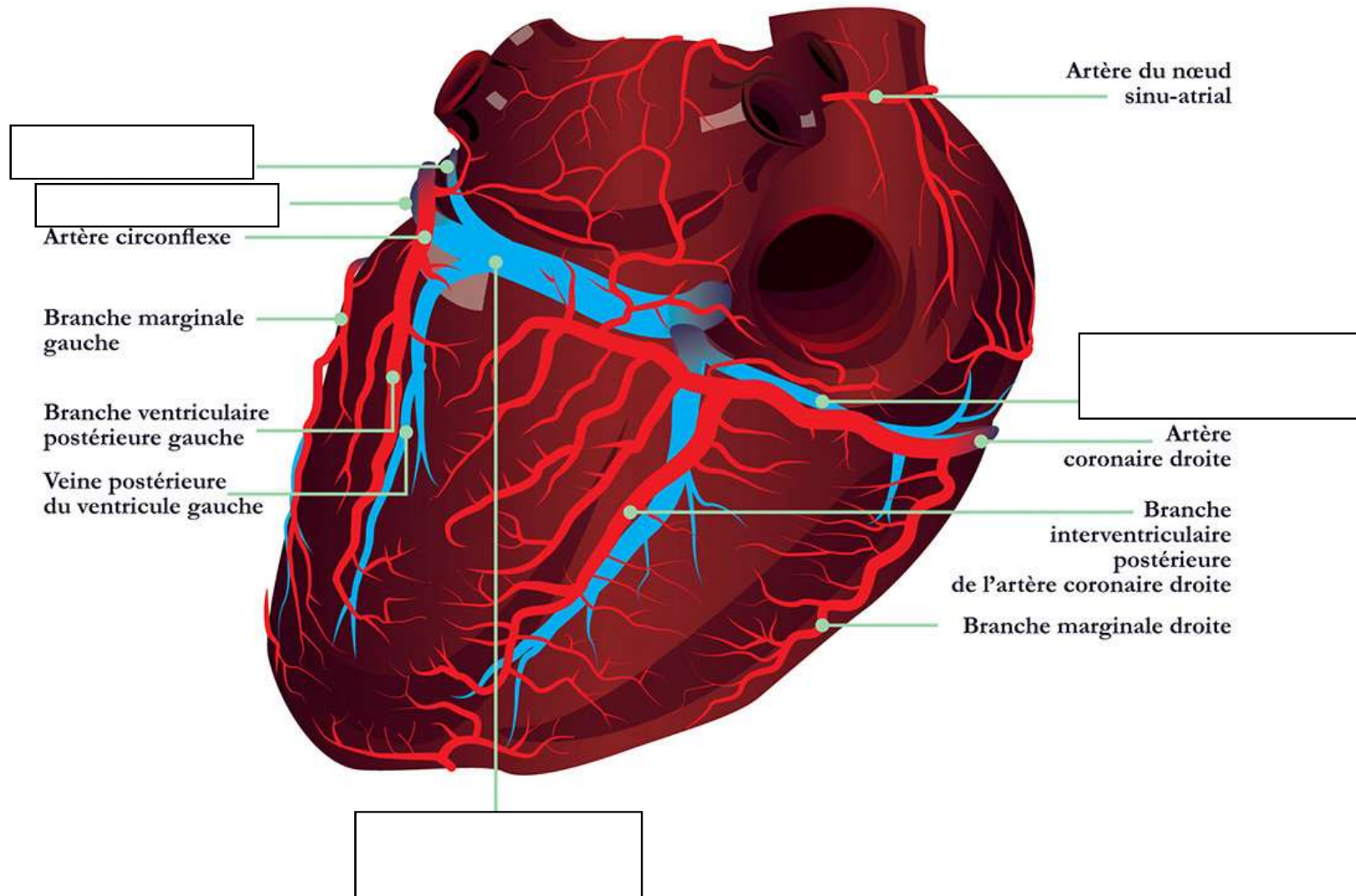
# Coupe frontale du cœur



## Circulation coronaire artérielle



# Circulation coronaire veineuse

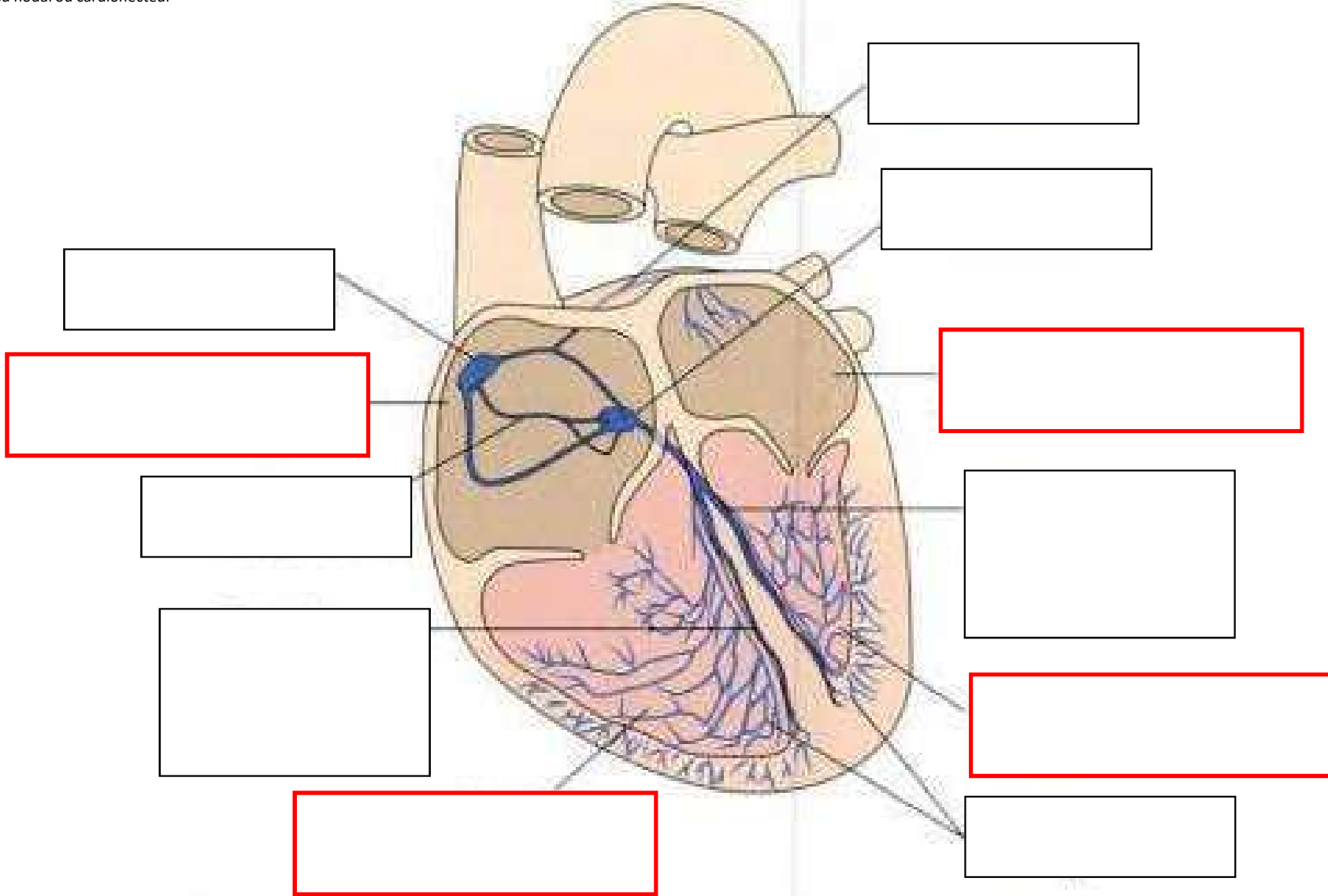


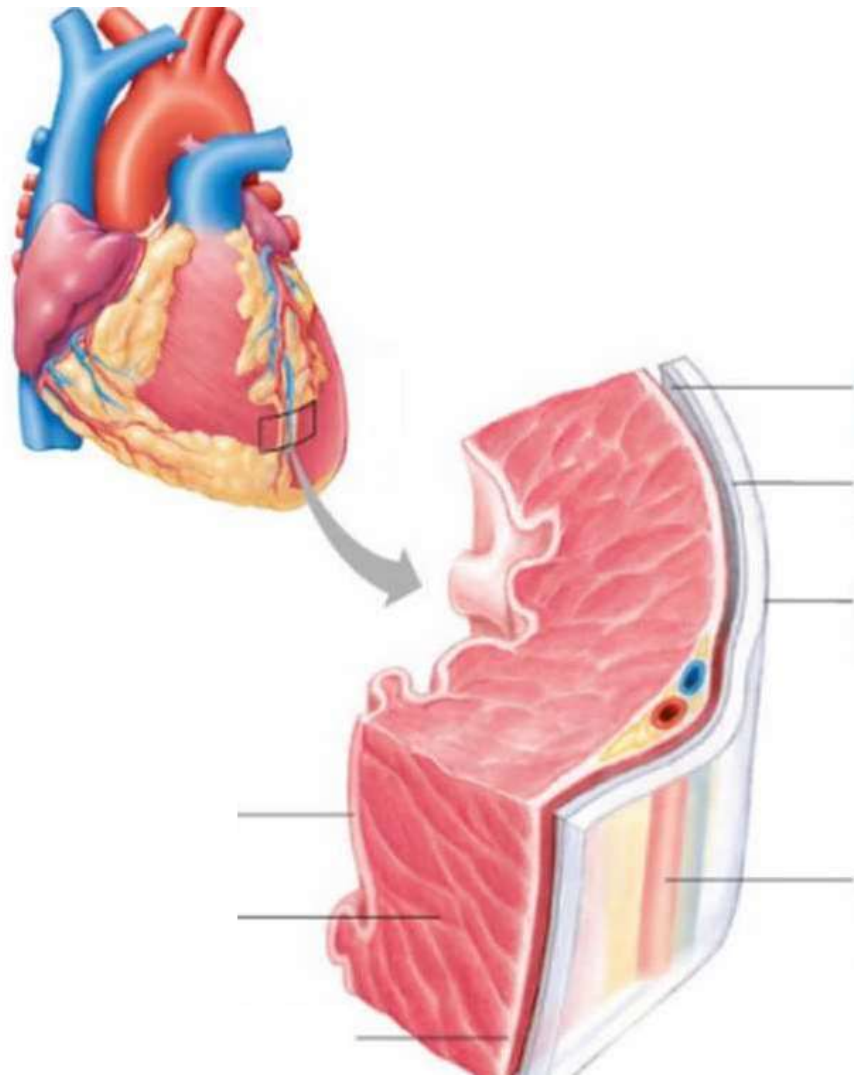


# Le tissu cardionecteur

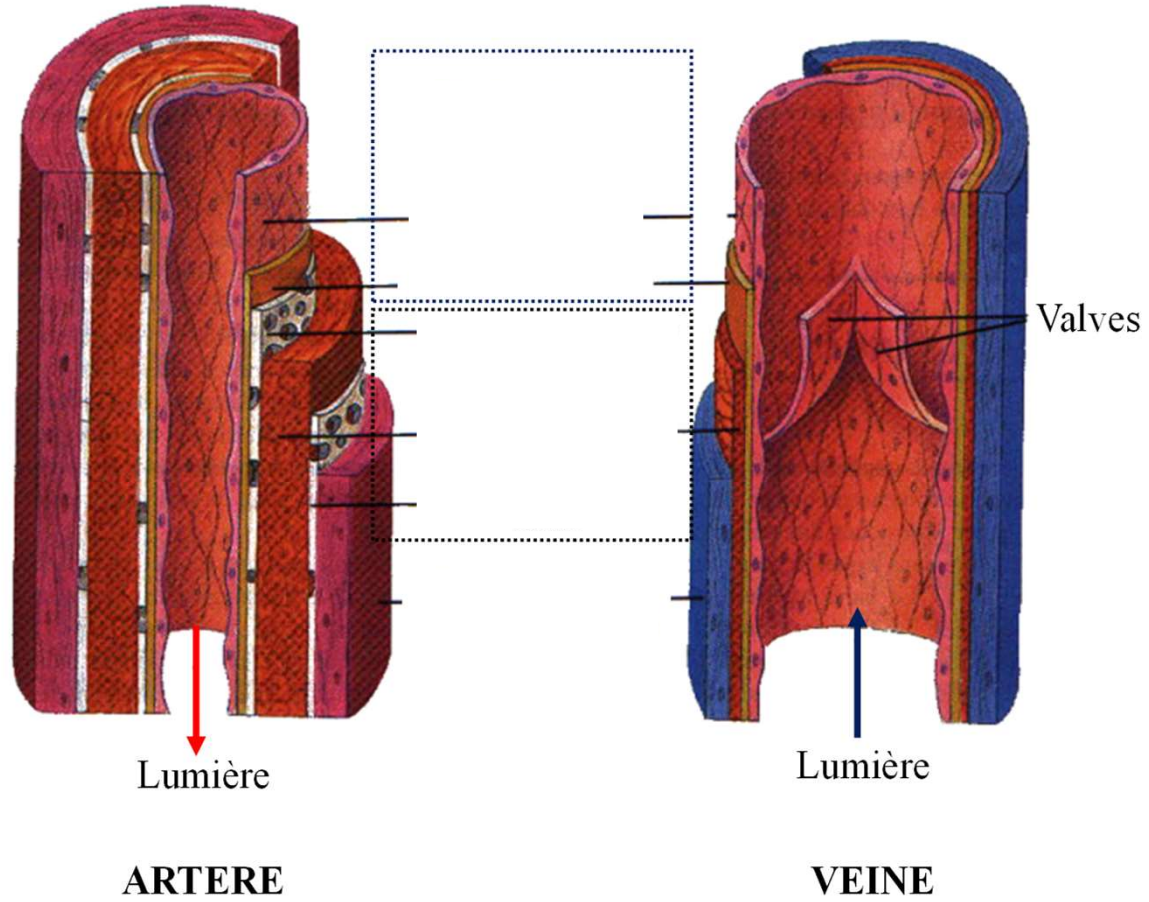
Cavités cardiaques

Tissu nodal ou cardionecteur





## Composition comparée artère et veine

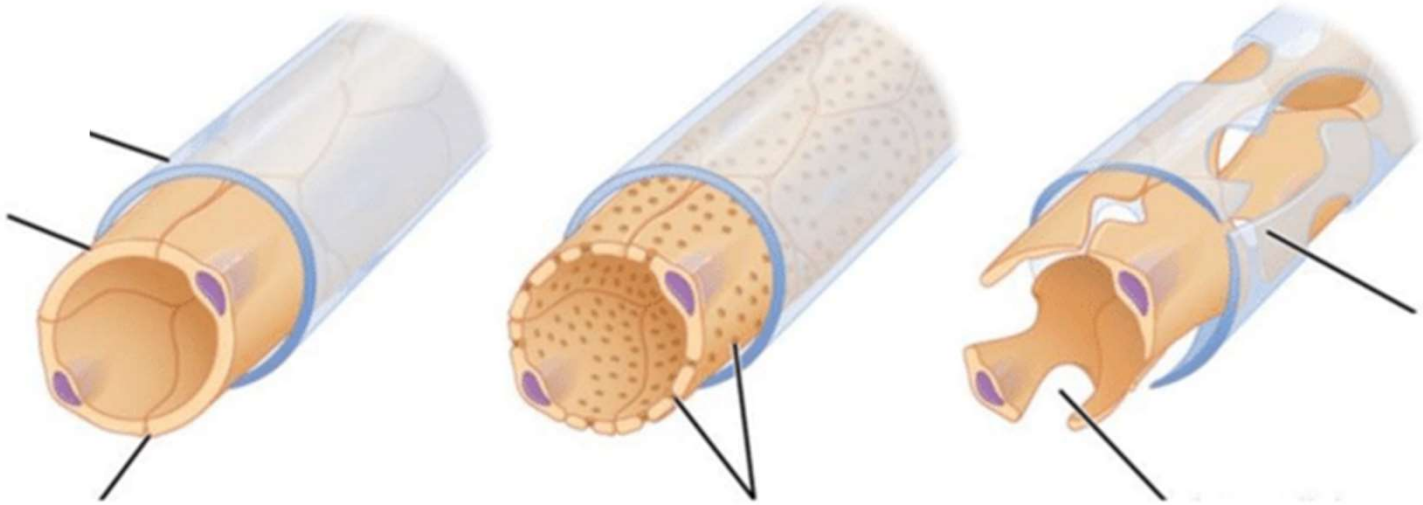


# Les différents capillaires

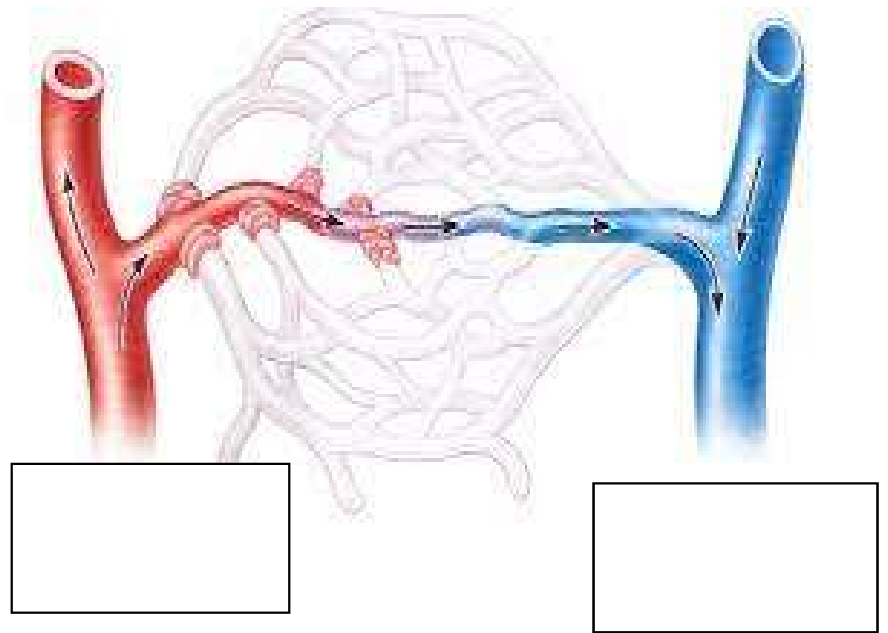
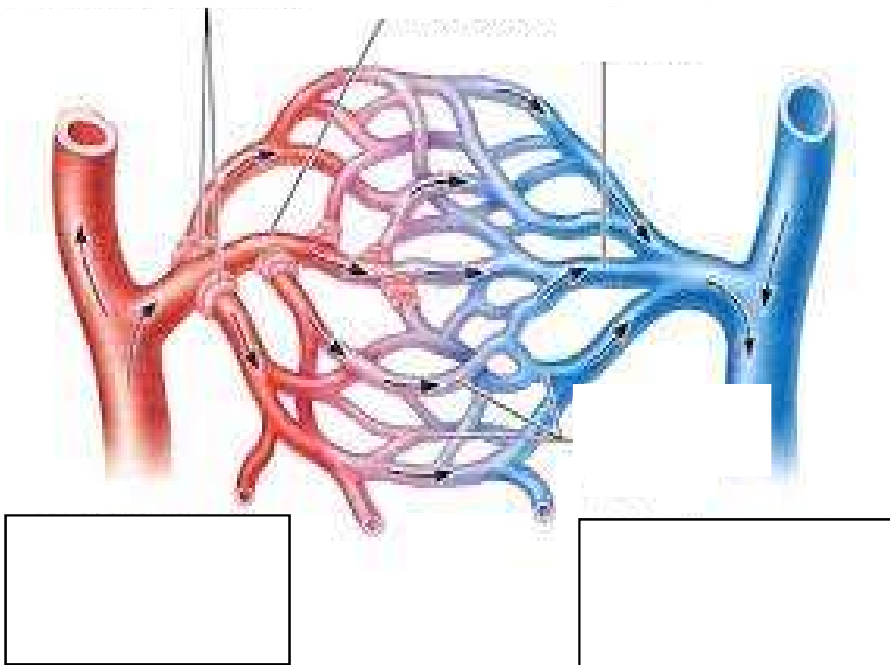
[Empty box for labeling]

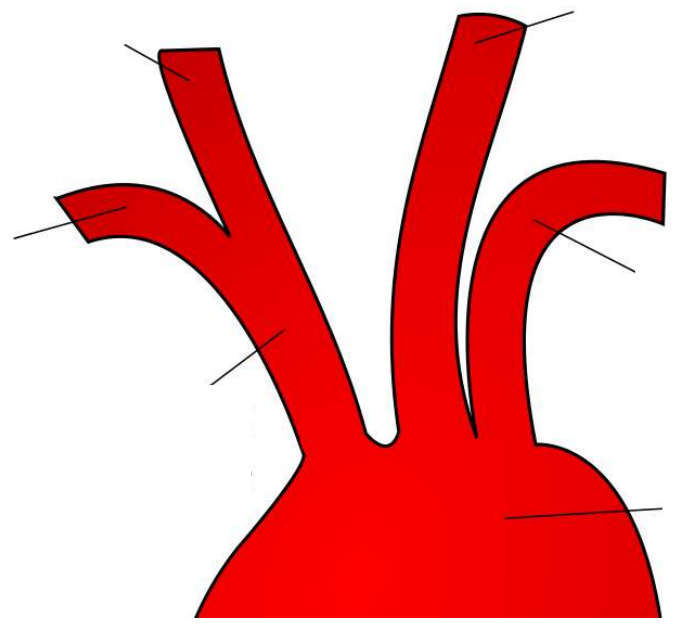
[Empty box for labeling]

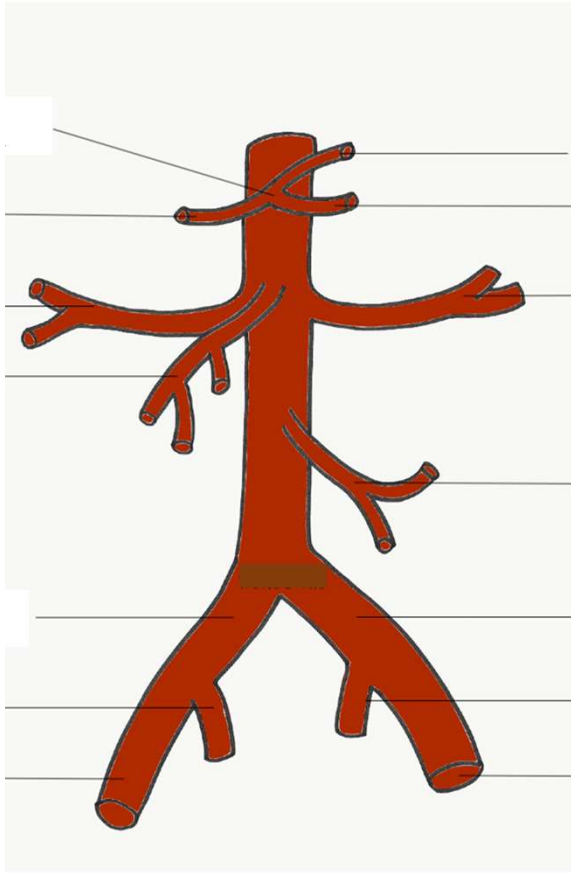
[Empty box for labeling]

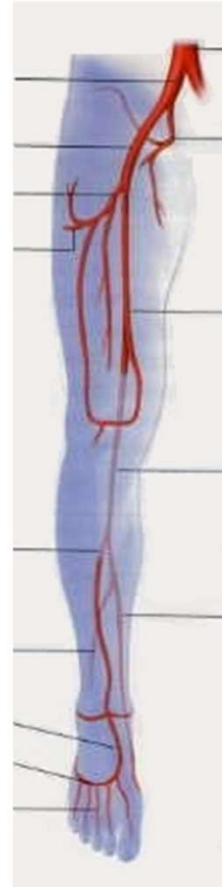
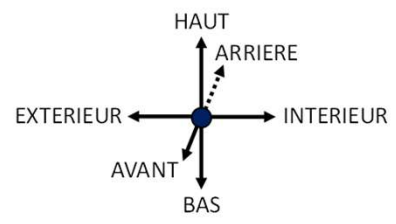


[Empty box]

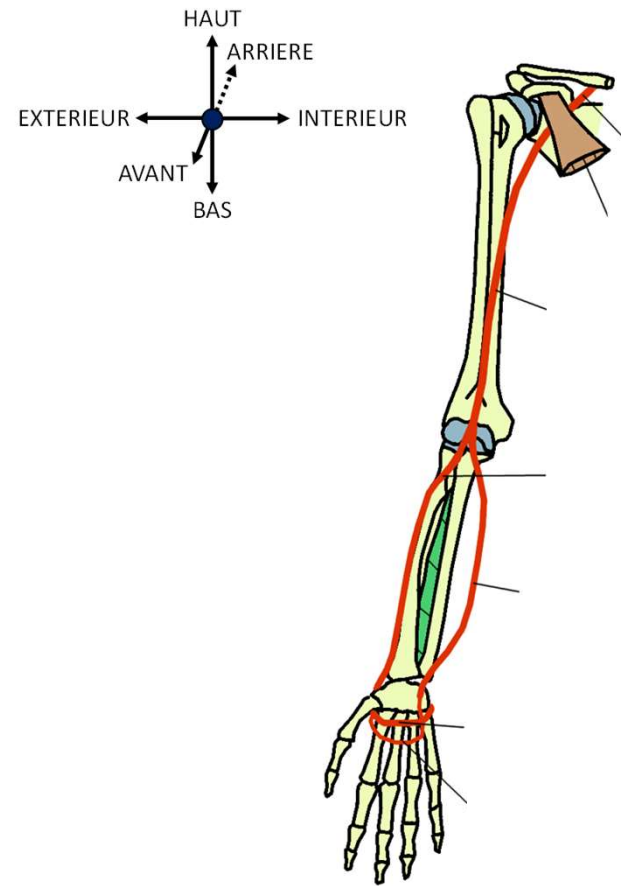


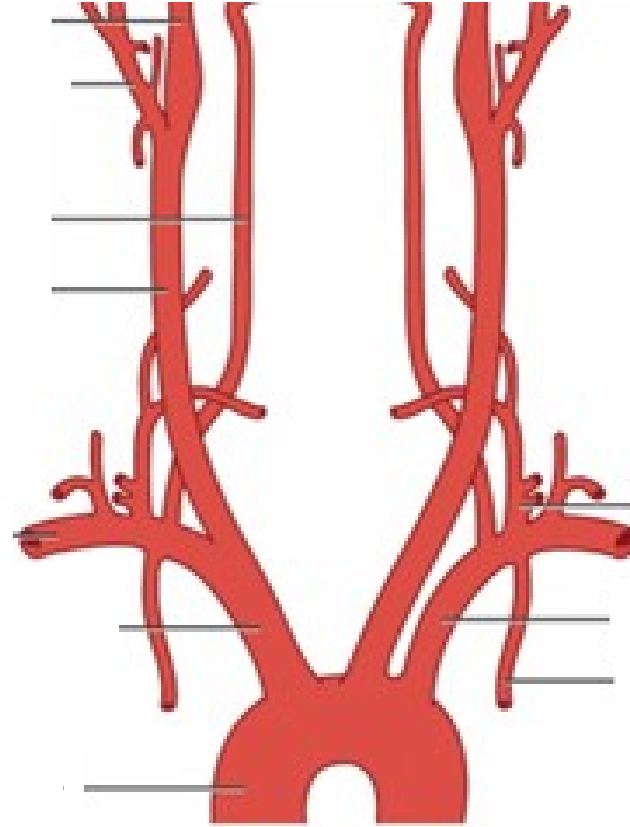


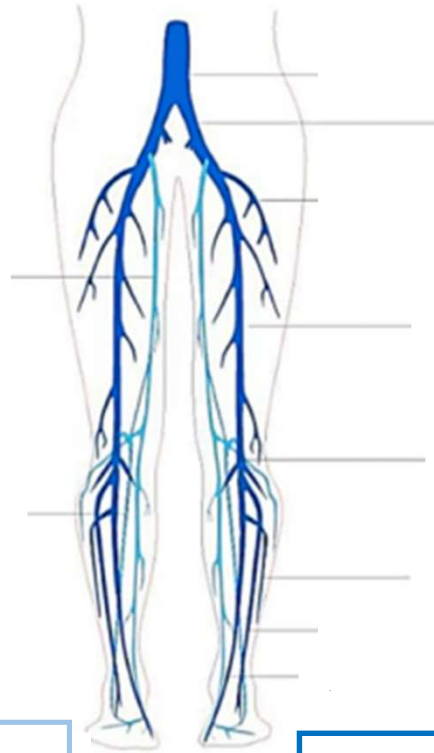
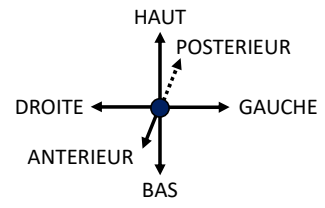


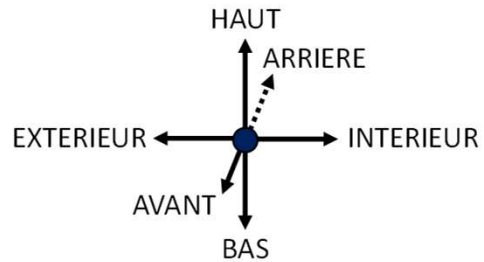




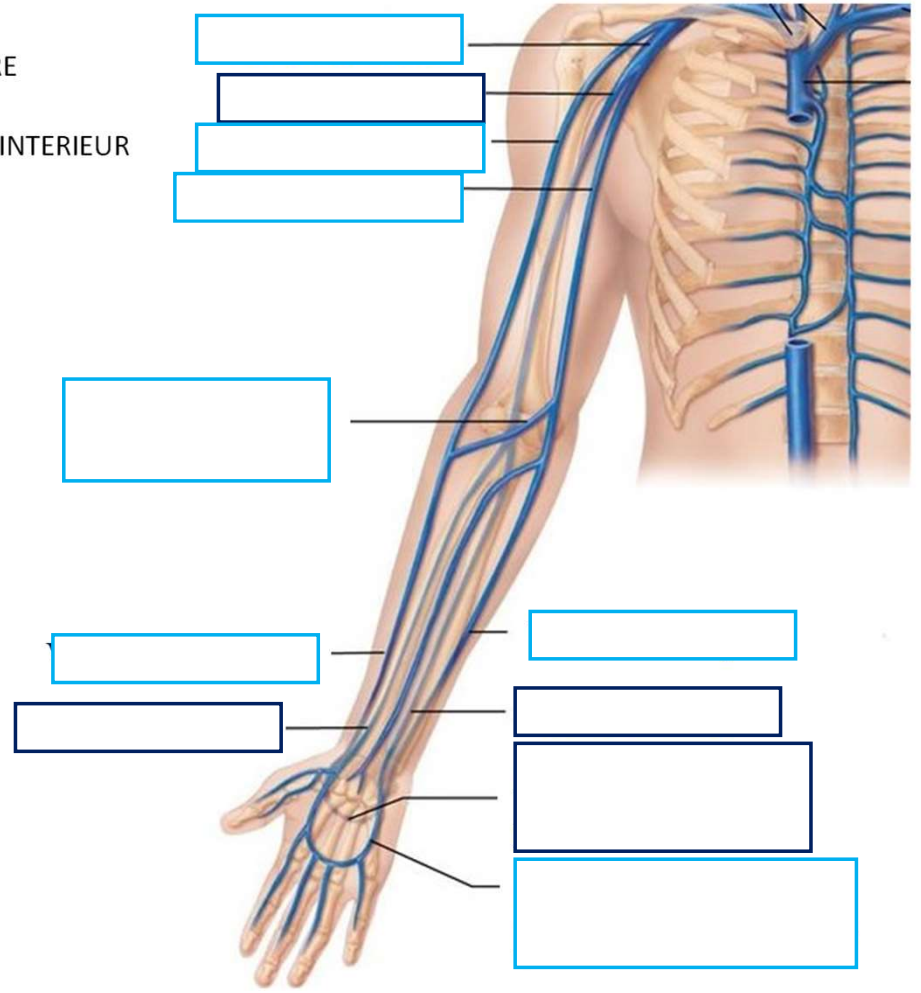




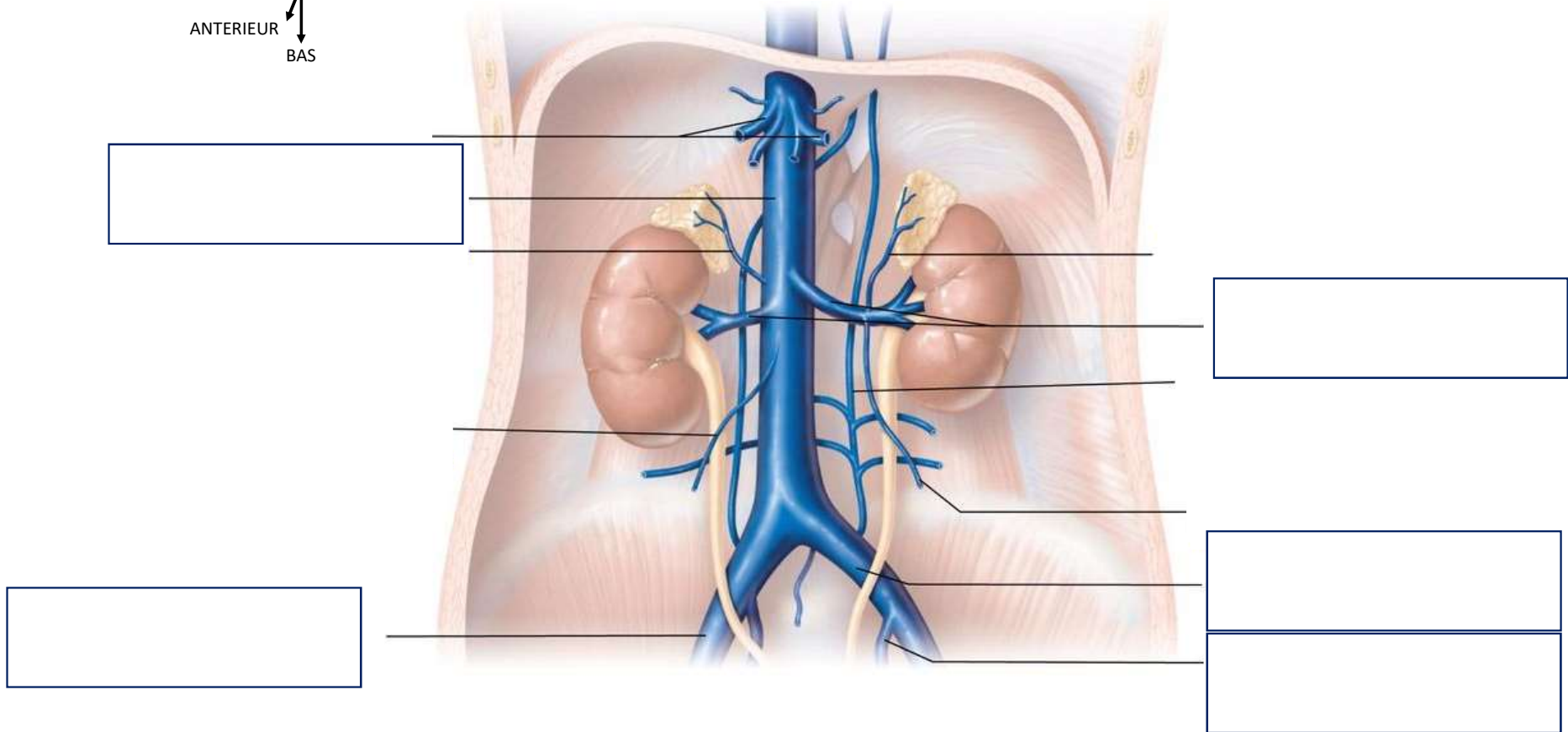
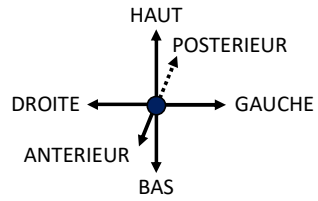




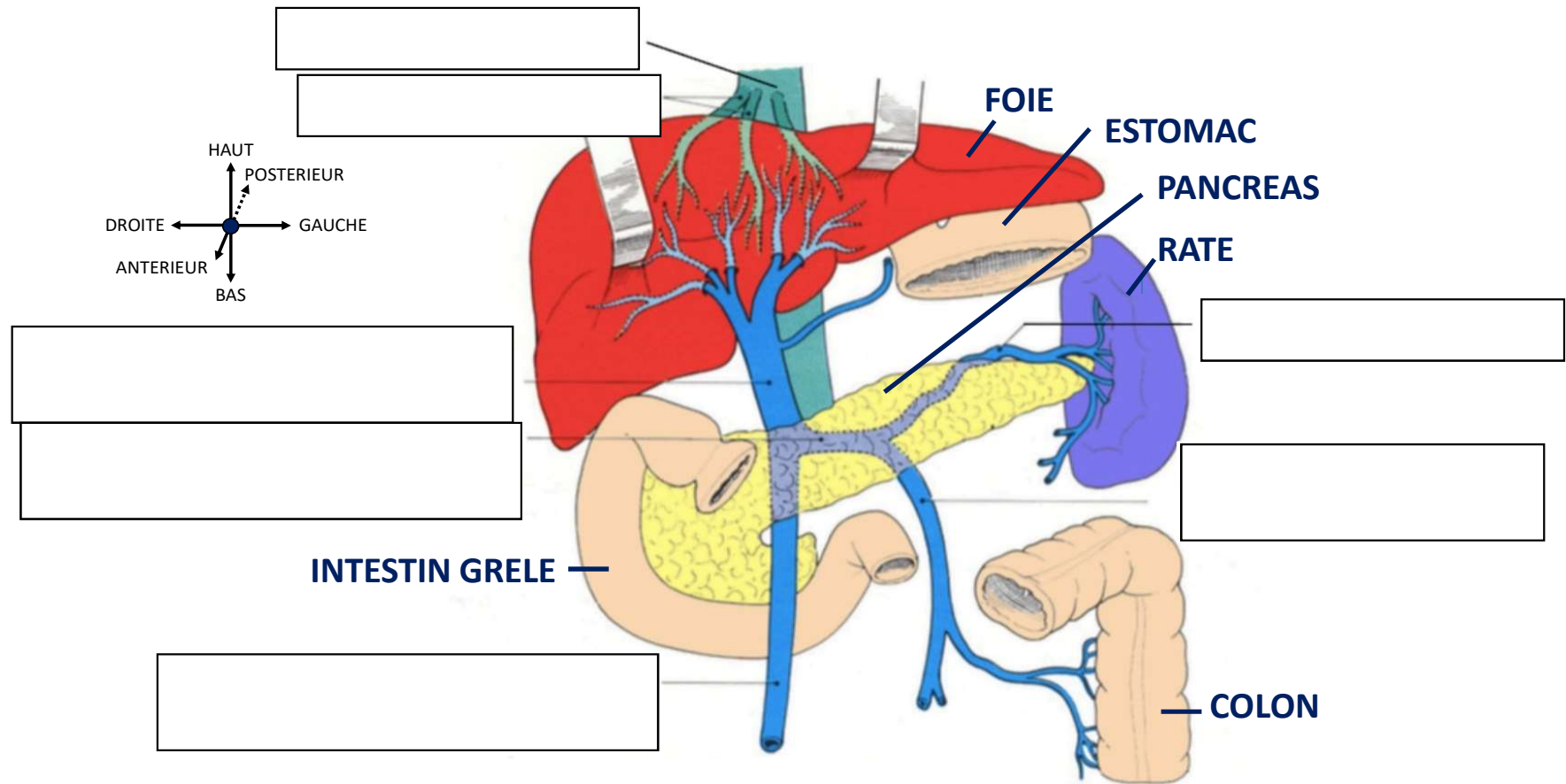
Veines profondes  
 Veines superficielles



# Veines profondes abdominales, hors système porte



# Systeme porte



## Veines tête et cou

