



ENTREPRENEURSHIP



?

?

?

?



Catherine Wable

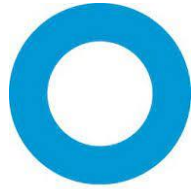
?

?



Lyon 1

Catherine Wable



ODIMO



Data IA
Expert

bpi**france**





MMIC - Entrepreneurship

3 sessions

- Thursday 13th November 4pm to 6 pm
- Thursday 27th November 2pm to 4pm
- Thursday 4th December 2pm to 4pm



Lyon 1

Course content

Introduction

Demography and Employment

From generalized employee model to Entrepreneurship Model

Historical evolution of entrepreneurship

Entrepreneurship in the world

Current policies in Europe and beyond

Conclusion

4th december Evaluation (1 hour)



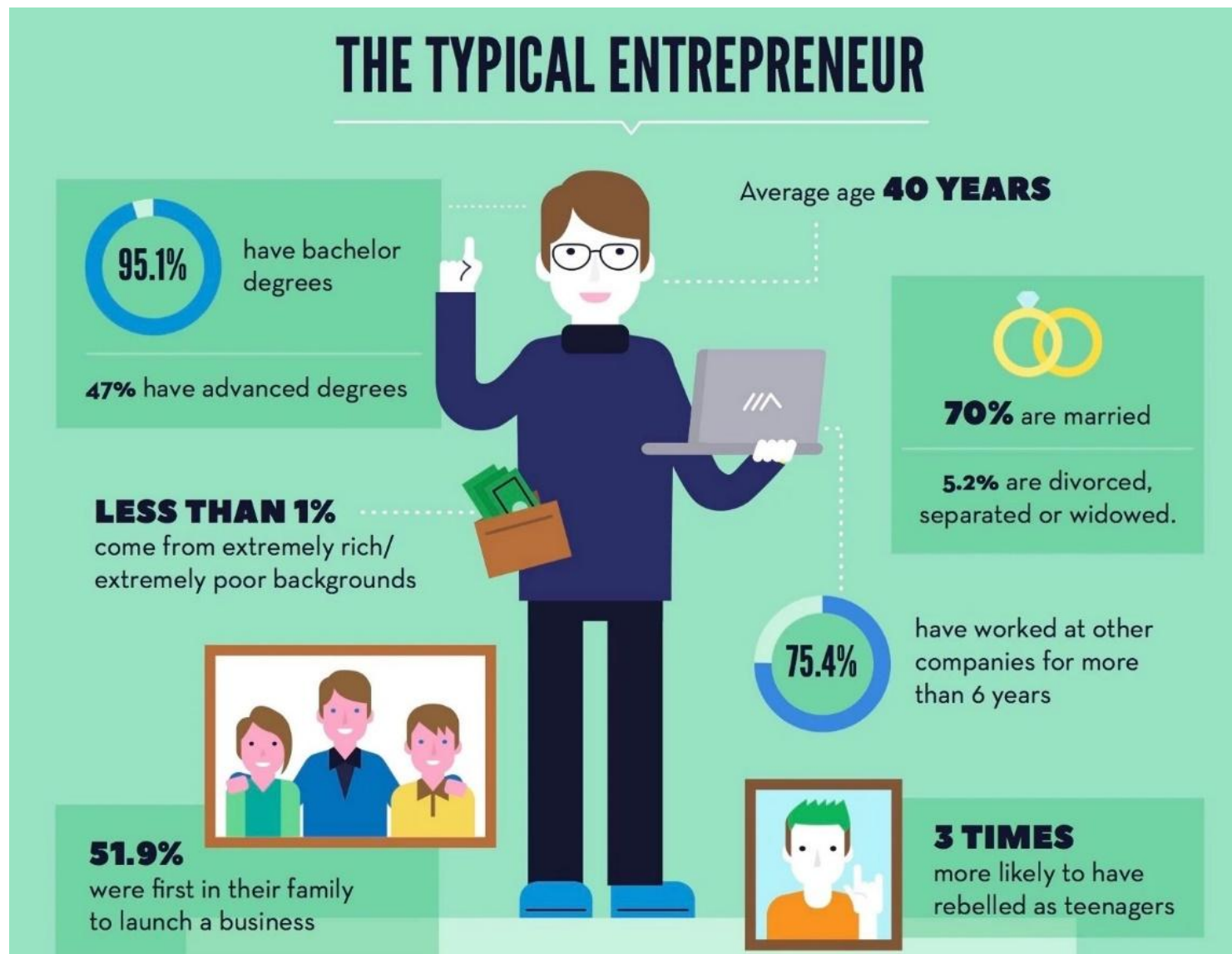
Lyon 1

Introduction

How would you define an entreprise?

How would you define an entrepreneur?

Introduction





Demography and Employment

The evolution of economic systems and demographics have influenced employment patterns over time.

- a) Agrarian society (and Handicraft economy) (circa 10,000 BCE – 18th Century)
- b) Industrial Society (end of 18th Century – Mid-20th Century)
- c) Post-Industrial Economy or Service economy (Mid-20th Century – Late 20th Century)
- d) Knowledge Economy or Information Age (Late 20th Century – Present)



Lyon 1

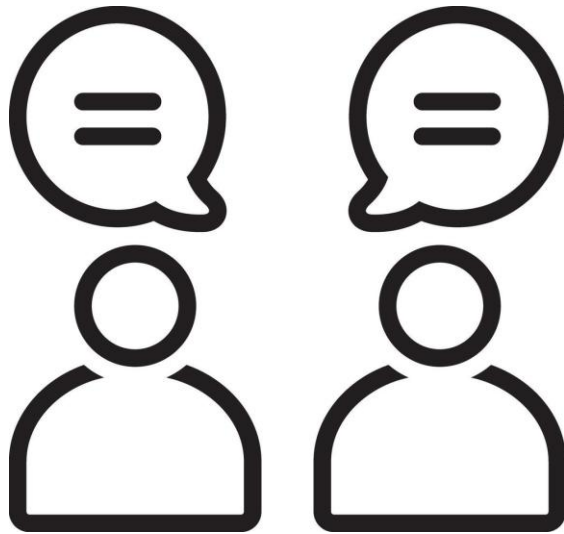
From generalized employee model to Entrepreneurship Model



Lyon 1

From generalized employee model to Entrepreneurship Model

Debate



2 groups

1 in favor of the Employee Model

1 in favor of the Entrepreneurship Model

15 minutes

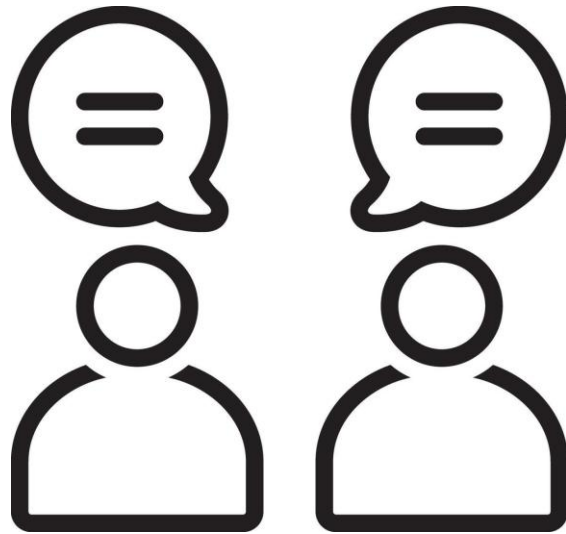
Think of the characteristics of each model

Prepare your argument



Lyon 1

More discussions



Is entrepreneurship genuinely emancipatory, or does it reinforce neoliberal dominance?

Should governments prioritize policies that encourage entrepreneurship over traditional employee protections?

Has the widespread promotion of the “entrepreneurial self” improved or undermined social cohesion and equity?



Lyon 1

Historical evolution of entrepreneurship

Entrepreneurship has always existed but it has evolved over centuries

- a) Guilds and craftsmen considered founders of Modern entrepreneurship
- b) Industrial revolution and beyond
- c) Innovation and Entrepreneurship in the 19th and 20th century
- d) Modern Era



Lyon 1

To prepare for next session (Nov, 27th)

What is the perception of entrepreneurship and entrepreneurs in your country?
What public policies are in place?

No presentation, no computer, no phone.
Your brain, a piece of paper, a white board and markers.